

Supplementary Figure S1

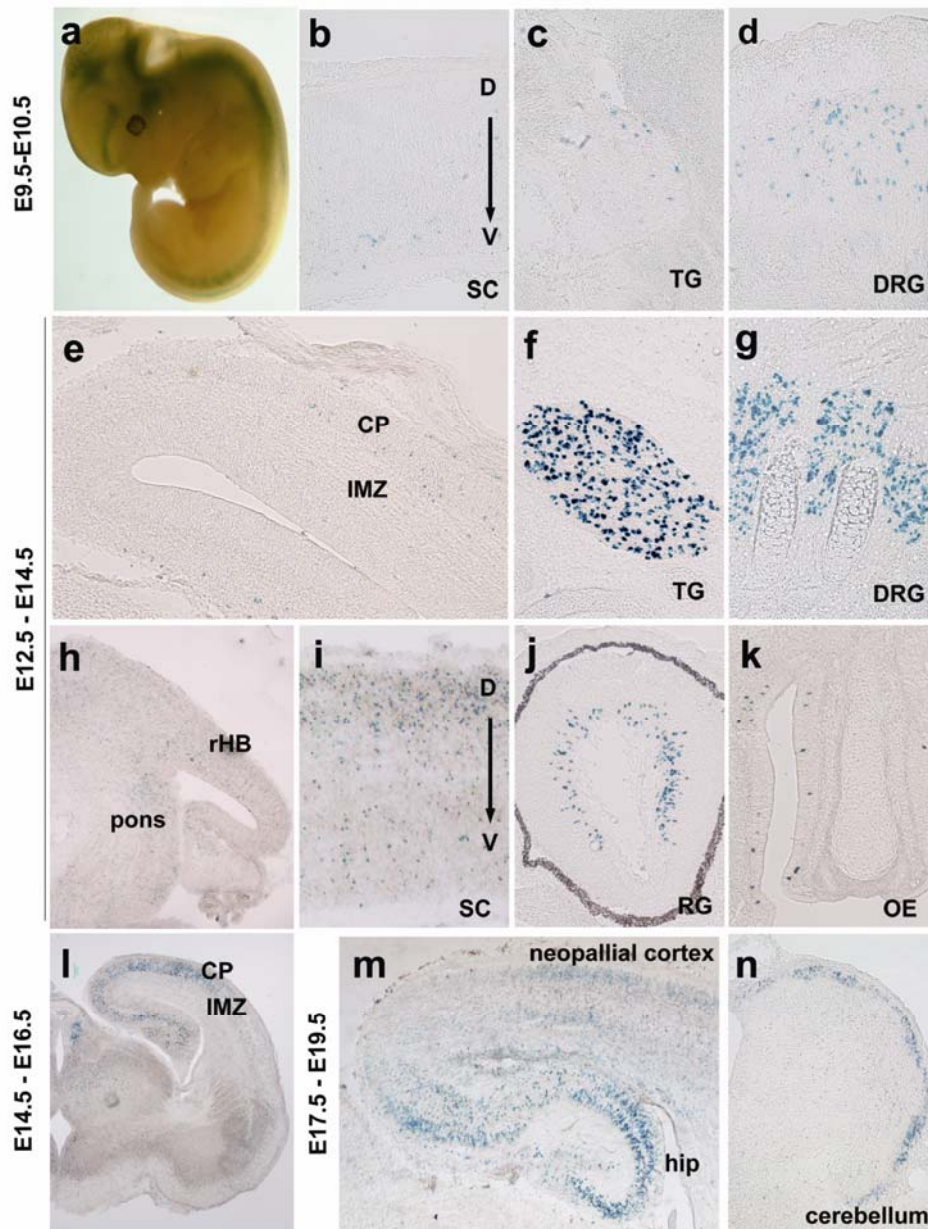


Figure S1 Embryonic expression pattern of CreER^{T2} activity at different stages. All panels are LacZ staining. (a) Whole mount staining of an E10.5 embryo induced with tamoxifen on E9.5. (b-d) CreER^{T2} activity at E10.5 in the spinal cord (b), trigeminal ganglion (c) and dorsal root ganglion (d). (e-k) Patterns of CreER^{T2} activity at E14.5

48 h after tamoxifen delivery in cerebral cortex **(e)**, trigeminal ganglion **(f)**, dorsal root ganglion **(g)**, and in cerebellum and spinal cord **(i)**, retina ganglion **(j)** and olfaction epithelium **(k)**. **(l)** Robust CreER^{T2} activity in the cortex and nascent hippocampus at E16.5. **(m-n)** Widespread CreER^{T2} activity at E19.5 in the cerebral cortex and hippocampus **(m)**, and the neurogenic region of cerebellum **(n)**. Abbreviation: CP: cortical plate, IMZ: intermediate zone, rHB: roof of hindbrain, SC: spinal cord, TG: trigeminal ganglion, DRG: dorsal root ganglion, RG: retina ganglion, OE: olfactory epithelium.