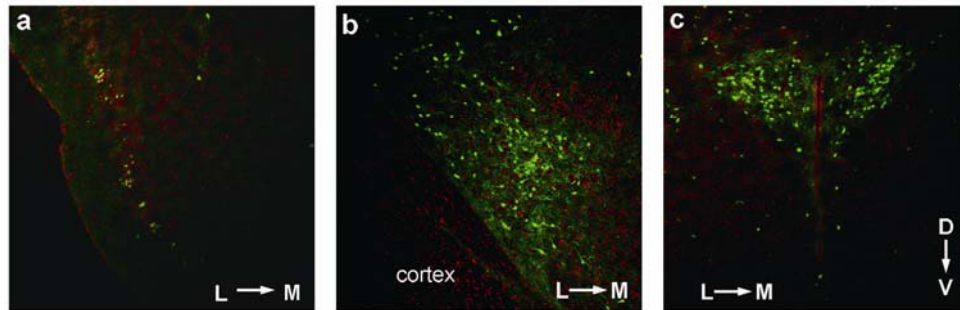


## Supplementary Figure S4



**Figure S4** YFP expression in other regions of the adult brain. **(a-c)** YFP<sup>+</sup> cells were observed in the piriform cortex **(a)**, amygdala **(b)**, and hypothalamus **(c)**. Sections were counter-stained with Hoechst (red). Orientation is indicated with arrow and symbols: L (lateral), M (medial), D (dorsal), and V (ventral).