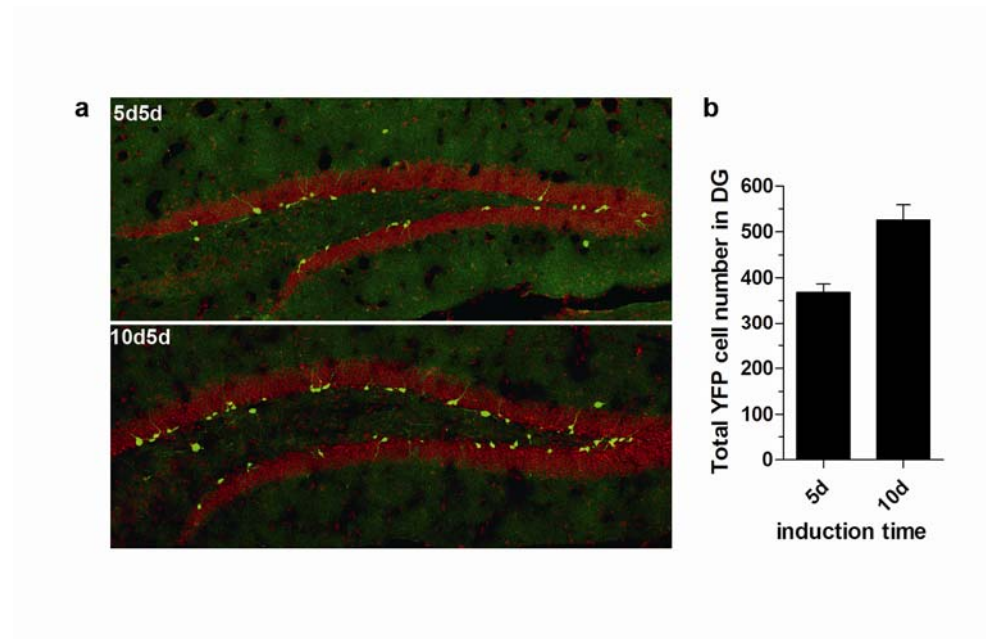


## Supplementary Figure S5



**Figure S5** Increased duration of tamoxifen induction resulted in labeling of a greater number of newborn neurons. *Dcx-CreER (T2):Rosa26-EYFP* mice was administered tamoxifen (40 mg/kg, body weight) for five (top) or ten (bottom) days intraperitoneally, and analyzed five days after the final injection. **(a)** The ten-day tamoxifen regimen led to the YFP-labeling of more cells (green) in the DG compared to the five-day regimen. Sections were counter-stained with Hoechst (red). **(b)** Averaged number of total induced YFP<sup>+</sup> cells in the DG (n = 2 per group).