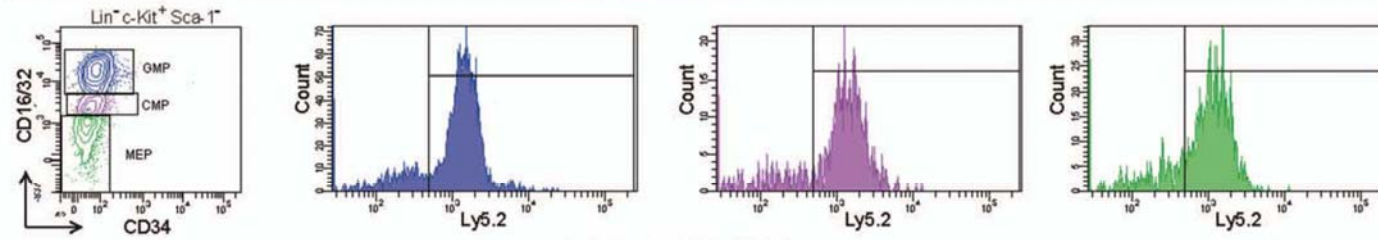
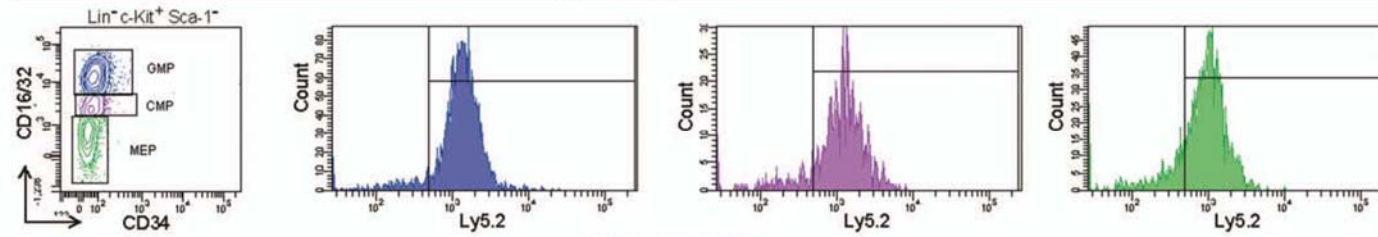


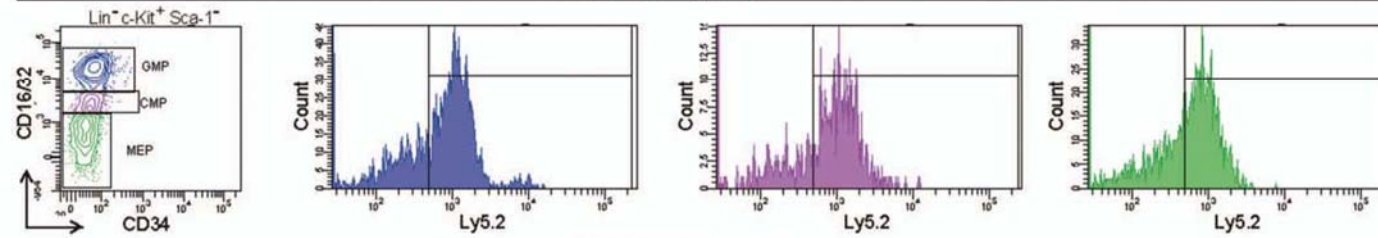
wt(Ly5.1):wt(Ly5.2)



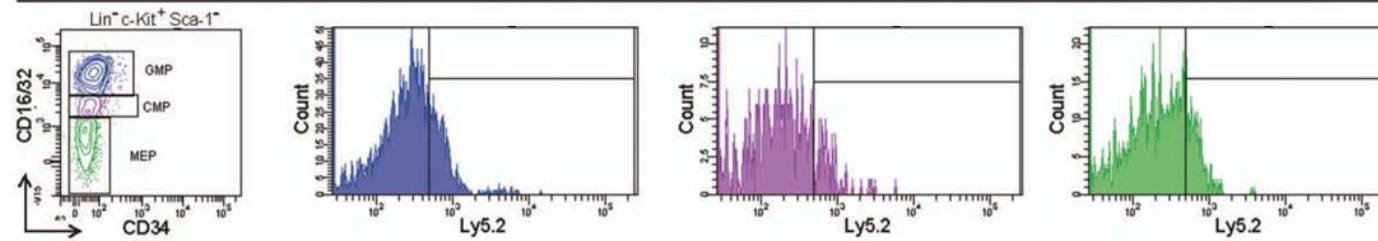
wt(Ly5.1):wt(Ly5.2) + TAM



wt(Ly5.1):2/1(Ly5.2)



wt(Ly5.1):2/1(Ly5.2) + TAM



Supplementary information, Figure S3 Loss of progenitor cells in bone marrow upon DOT1L deletion is cell autonomous.

Bone marrow competition assays were performed by co-transplanting wild type Ly5.1 Cre-negative cells with DOT1L^{+/+};Cre-ER Ly5.2 cells (wt) or DOT1L^{2lox/1lox};Cre-ER Ly5.2 cells (2/1) into wild type Ly5.1 mice. The percentage of Ly5.2 cells in gated GMP (blue), CMP (magenta), and MEP (green) are shown. The percentage of Ly5.2 positive cells is significantly reduced only when DOT1L is deleted, wt(Ly5.1):2/1(Ly5.2) + TAM.