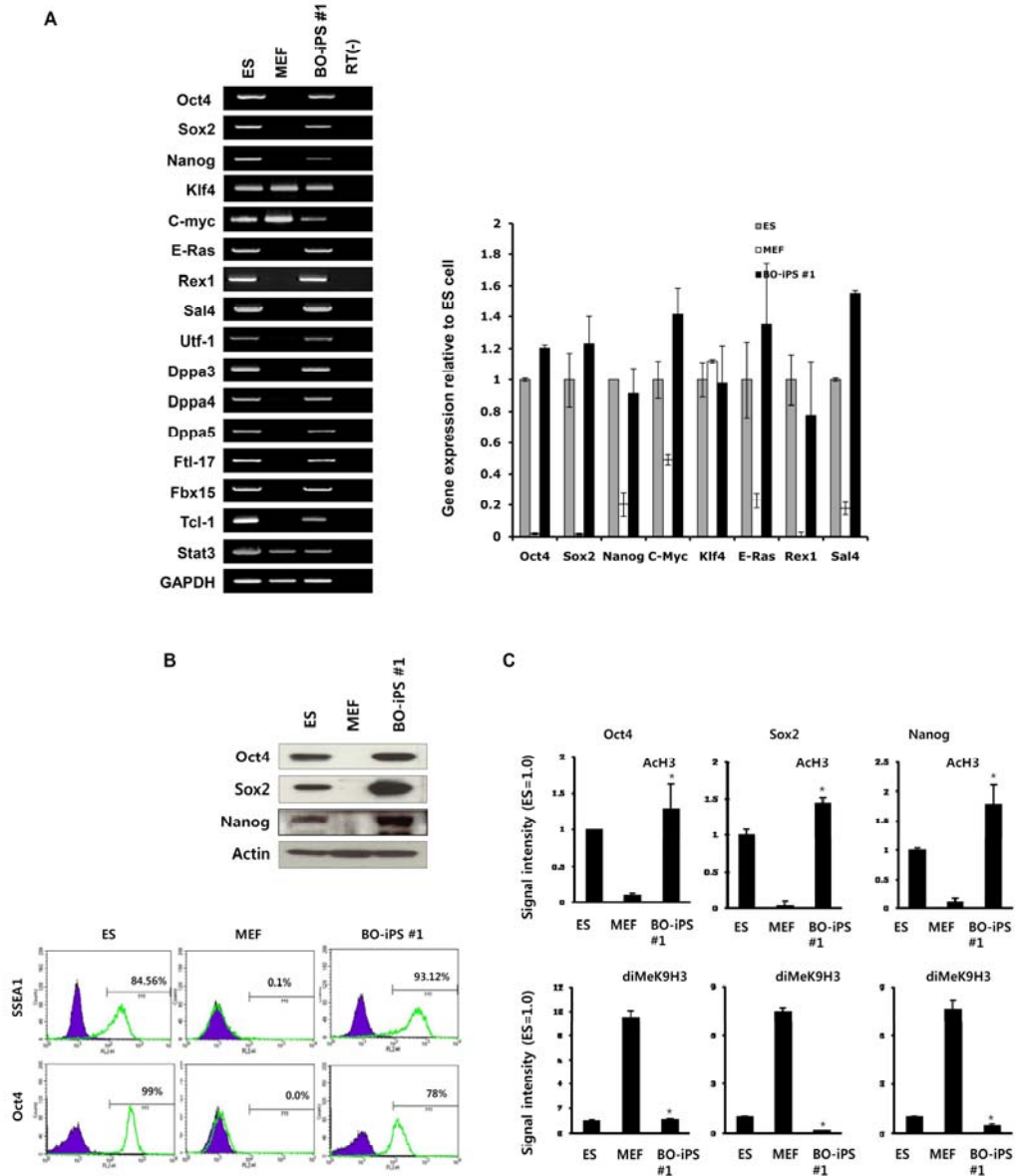


Figure S2



Supplementary information, Figure S2. Characterization of BO-iPS cells. **(A)** RT-PCR and qPCR analysis for ES cell marker genes in mES cells, MEFs, and BO-iPS-1 clones. **(B)** Western blot (left) and FACS (right) analyses of BO-iPS-1 cells. Antibody control, blue line; SSEA1 and Oct4, green line. **(C)** ChIP analysis of Oct4, Sox2, and Nanog promoters. Dimethylation status of lysine 9 of histone H3 (diMeK9H3) and acetylation status of histone H3 (ACh3) in mES cells, MEFs, and BO-iPS cells are shown. Data were quantified by real-time PCR and shown as the means and standard deviations of relative values compared to mES cells ($n = 3$). $*P < 0.05$ compared to MEFs.