

Supplementary information, Figure S1

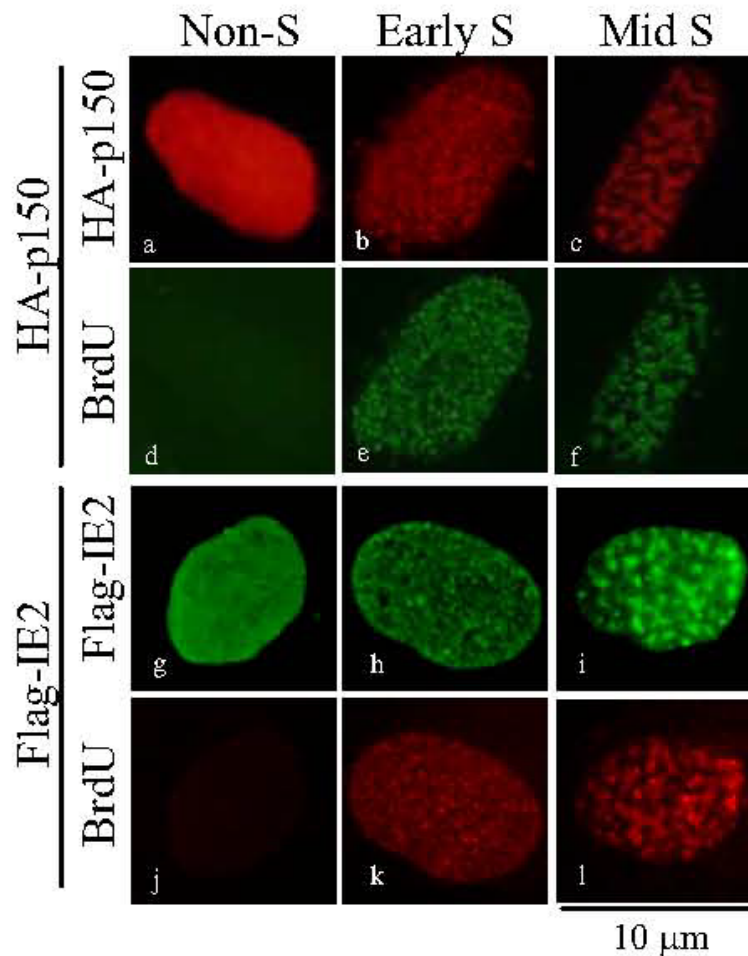


Figure S1 Both p150 and IE2 localize at BrdU-positive foci in transfected cells. U2OS cells cultured on coverslips were transfected with HA-p150 (a-f) or Flag-IE2 (g-l), followed by incubation with 100 μM BrdU for 15 minutes. Cells were then fixed, double-stained with either the HA antibody (a-c) or the Flag antibody (g-i) and the BrdU antibody (d-f and j-l). The fluorescence images were obtained from OLYMUS IX71 fluorescence microscopy. All shown images represent the phenomenon occurring in more than 90% of the population.