

Supplementary information, Figure S1

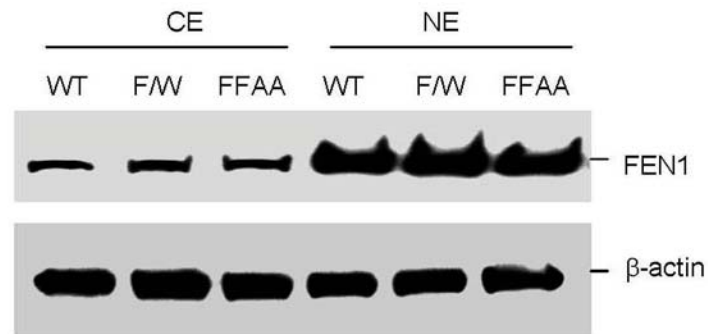


Figure S1 Levels of cytoplasmic and nuclear FEN1 were similar in WT, WT/FFAA, and FFAA/FFAA MEF cells. MEF cells of different genetic backgrounds were harvested and fractionated into cytoplasmic extracts (CE) and nuclear extracts (NE) as previously described [54]. The levels of FEN1 in CE and NE from different cells were detected by Western blotting analysis using a monoclonal anti-FEN1 antibody (Genetex). β -actin was used as a loading control.