

Supplementary information, Figure S2

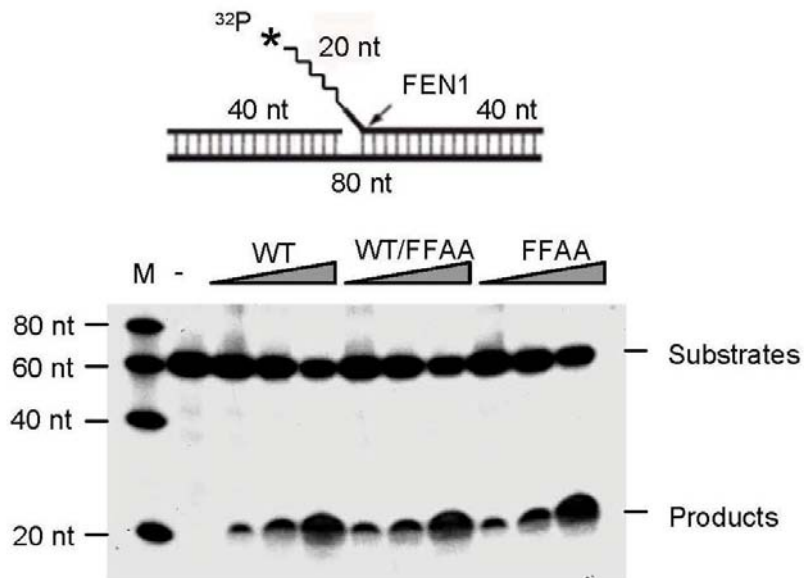


Figure S2 FFAA nuclease extracts (NEs) displayed similar flap cleavage activities to the WT NEs. To assay the 5' flap endonuclease activity, we prepared a gap substrate containing a 5' end ^{32}P -labeled 20 nt RNA-DNA flap (which consists of 17 ribonucleotides and 3 deoxyribonucleotides), (upper panel). Nuclear extracts (0.25 μg , 0.5 μg , or 1 μg) of the indicated cells were incubated with the indicated DNA substrates (1 pmol). All reactions were carried out at 37 $^{\circ}\text{C}$ for 15 min. Substrates and products were analyzed by 15% denaturing PAGE.