

Supplementary information, Figure S3

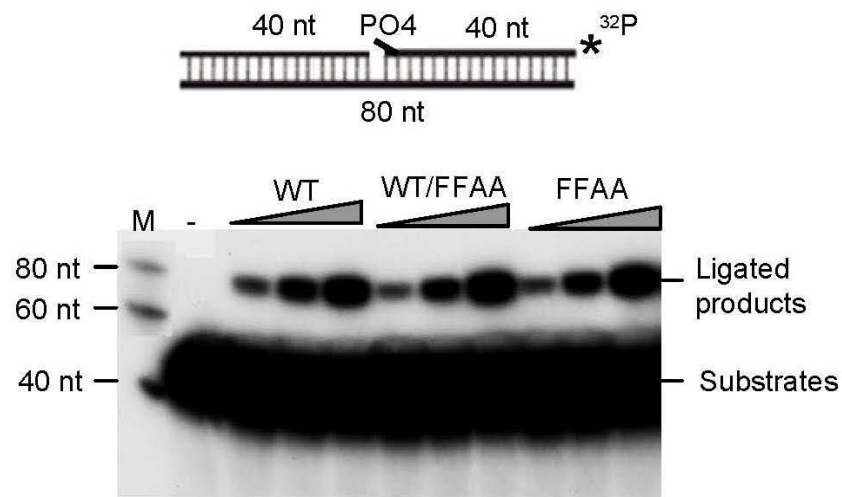


Figure S3 FFAA nuclease extracts (NEs) had similar ligation activities to the WT NEs on the nicked DNA substrates. To assay the ligation activity, we prepared a 3' end ^{32}P -labeled nick substrate (upper panel). The downstream oligo nucleotide was phosphorylated to allow a simple DNA ligation reaction. Nuclear extracts (0.25 μg , 0.5 μg , or 1 μg) of the indicated cells were incubated with the indicated DNA substrates (1 pmol). All reactions were carried out at 37 $^{\circ}\text{C}$ for 15 min and analyzed by 15% denaturing PAGE.