

Supplementary information, Figure S6

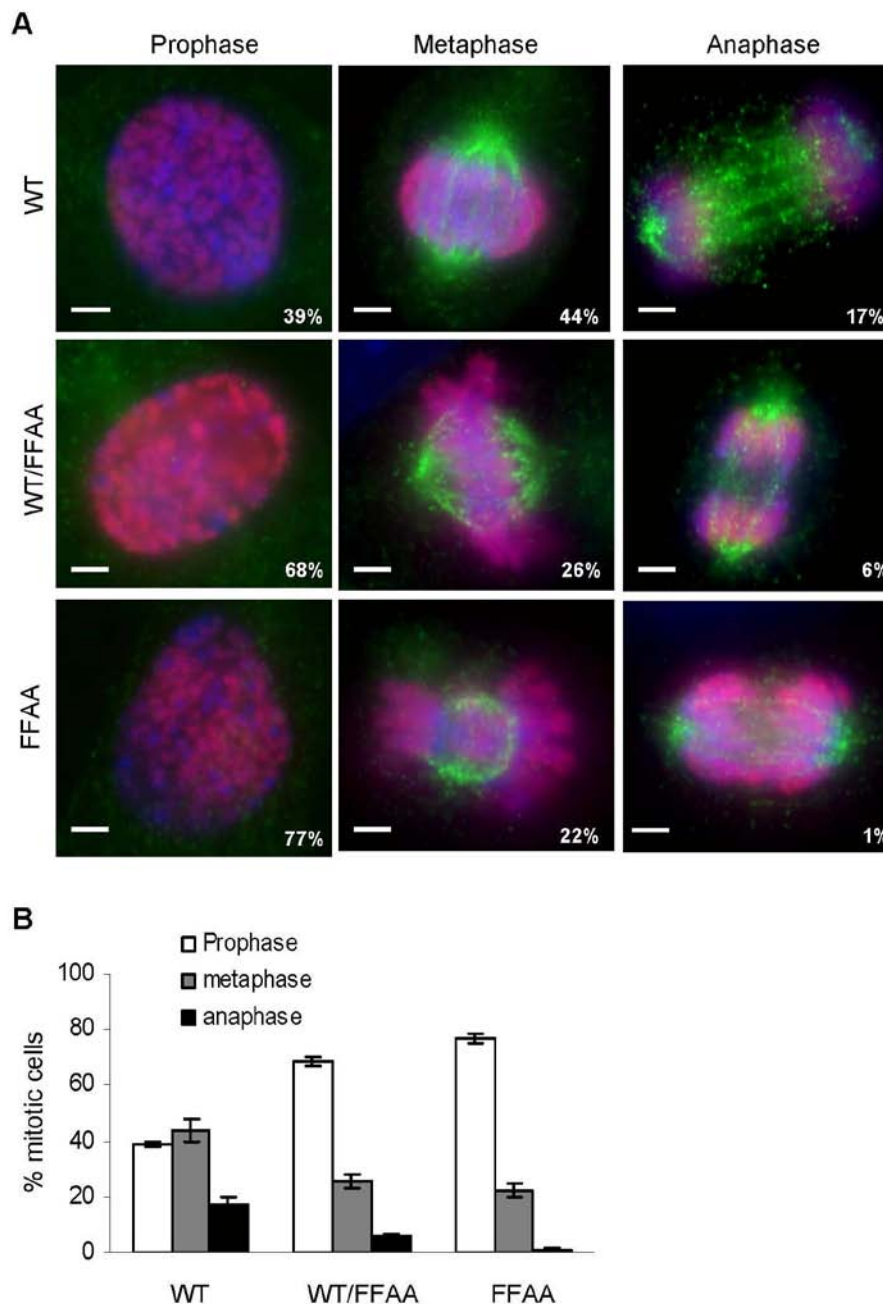


Figure S6 The FFAA mutation induced cell cycle arrest at the prophase. Primary WT, WT/FFAA, or FFAA/FFAA cells were fixed in 4% paraformaldehyde and stained with antibodies against phospho-Histone H3 (red) and α/β tubulin (green). Nuclei (blue) were stained with DAPI. Panel A showed representative images of the cells at different stages. Prophase cells had condensed chromatin but no microtubule; metaphase cells displayed condensed chromatin aligning in the middle of the cells with attached microtubules; and anaphase cells showed separation of two sets of chromatin into opposite directions. The percentage of mitotic cells in each stages of different genetic backgrounds were specified in each panel and summarized in the panel B. Scale bars: 5 μ m.