

Supplementary information, Figure S1

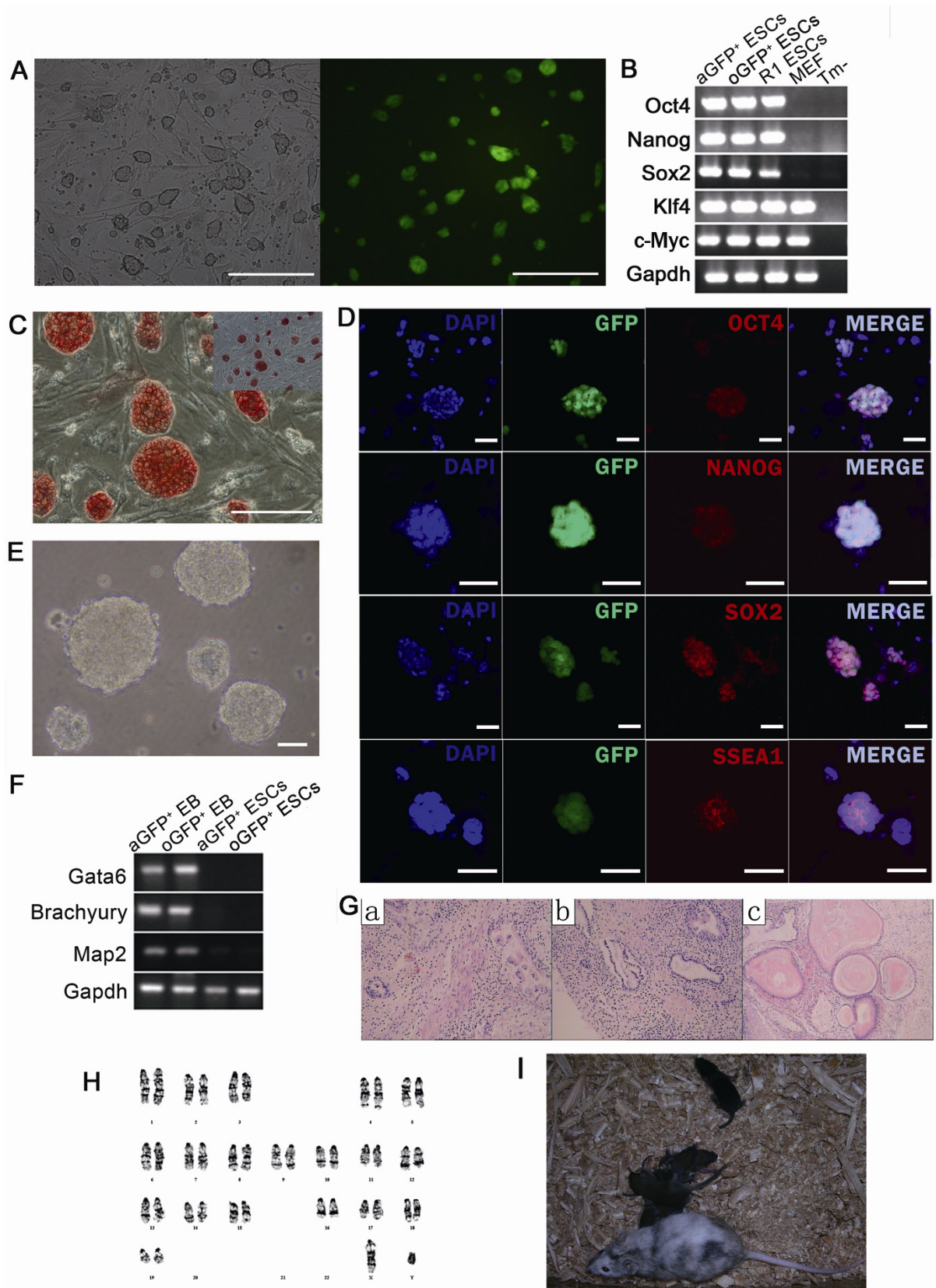


Figure S1 Characterization of oGFP⁺ embryonic stem cells. **(A)** A phase-contrast image of oGFP⁺ ESCs (Oct4-driven GFP⁺ ESCs). Scale bar = 200 μm. **(B)** RT-PCR of pluripotent markers. R1 ESCs, mouse embryonic fibroblast (MEF) and template-free PCR systems (Tm-) were used as controls. **(C)** Alkaline phosphatase staining. Scale bar = 100 μm. **(D)** Fluorescent immunostaining of pluripotent markers. Scale bar = 50 μm. **(E)** Embryonic body formation. Scale bar = 200 μm. **(F)** RT-PCR of markers for 3-germ layers on day-4 embryoid bodies. **(G)** Teratoma formation. Teratomas were harvested 4 weeks after subcutaneous injection of oGFP⁺ ESCs into SCID mice. Mesenchymal fibrous cells (a), glandular epithelium (b), and epidermis (c) were detected by hematoxylin and eosin (HE) staining. **(H)** Karyotype (40, XY). **(I)** Chimeric mouse and the F1 offspring. Cell passages from 15 to 20 were used in our study.