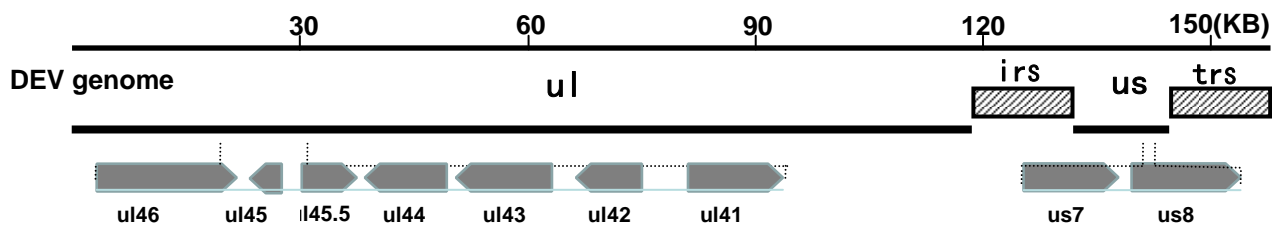


Fig. S1

A Sizes of fosmid viral DNA fragments and their corresponding locations within the DEV genome



Fosmid	Location in the genome (nt)	Size (bp)	Fosmid	Location in the genome (nt)	Size (bp)
A	1-41050	41050	L	69717-112962	43245
B	1-42611	42611	M	71128-113565	42437
C	1-42858	42858	N	87839-127216	39377
D	1-44511	44511	O	98197-129146	30967
E	36206-76520	40314	P	98972-126709	27737
F	36852-75346	38494	Q	103945-143040	39095
G	37026-75527	38501	R	108656-158091	49435
H	38245-77308	39065	S	113668-158091	44423
I	67695-103240	35545	T	119308-158091	38783
J	68314-109887	41573	U	119308-3706	42489
K	68717-109996	41279			

B Fosmid combinations used for virus generation and CPE induced by rescued viruses

Set	Combinations	CPE
1	A+F+J+P+U	+
2	B+E+J+P+S	-
3	B+G+I+N+S	-
4	B+H+L+O+S	-
5	C+E+M+O+T	-
6	C+H+L+P+T	-
7	D+E+I+P+T	-
8	D+E+L+Q+T	-
9	D+G+M+R	+
10	D+H+J+Q+T	+

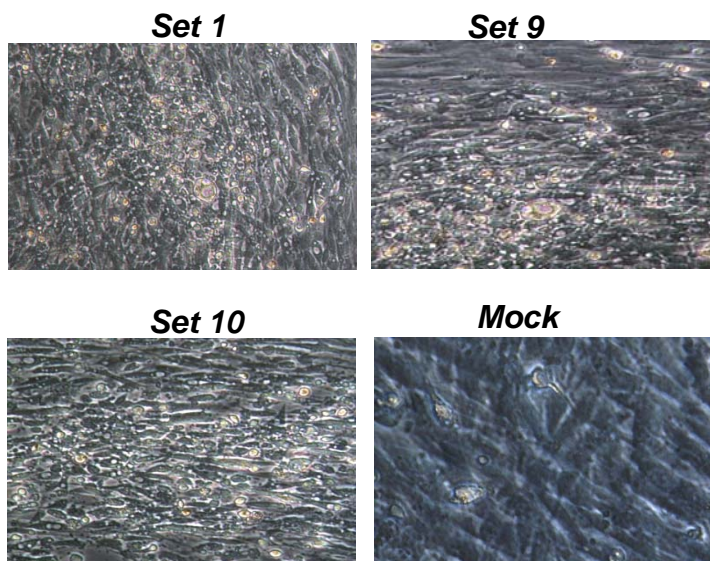


Fig. S2

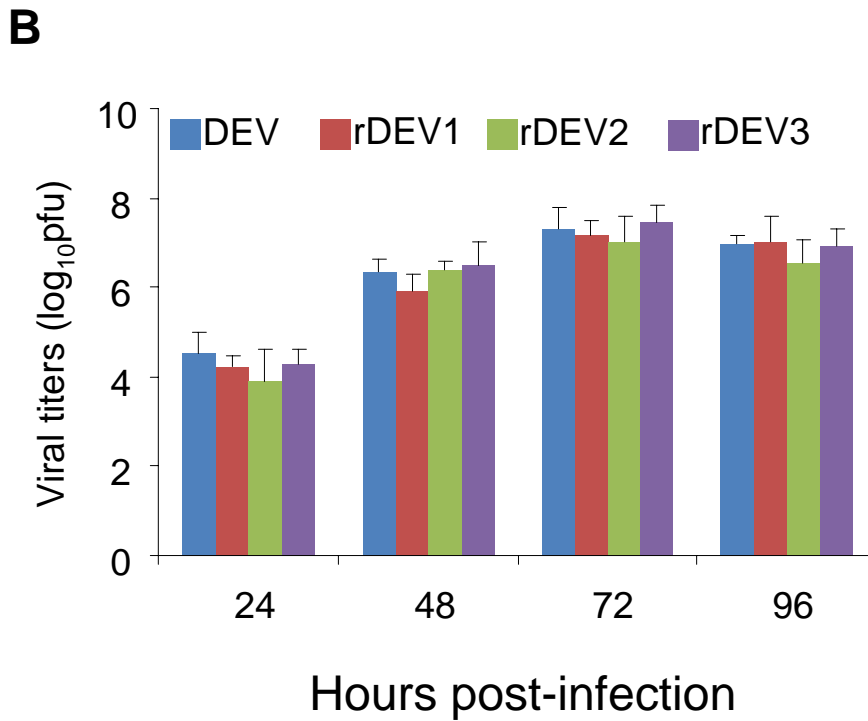
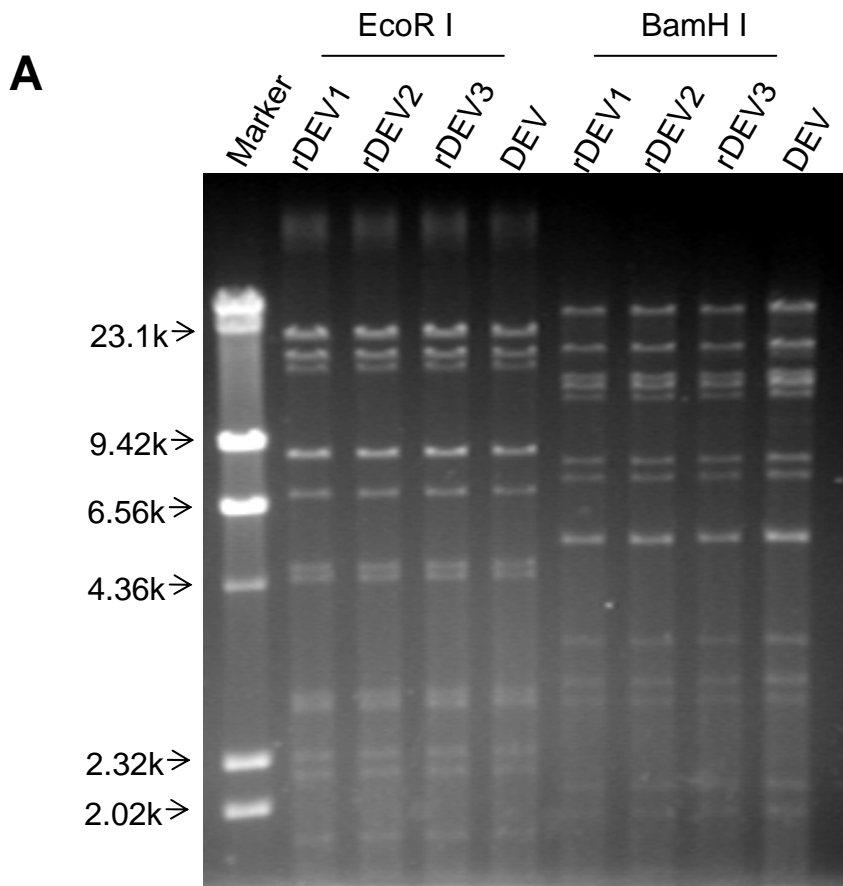
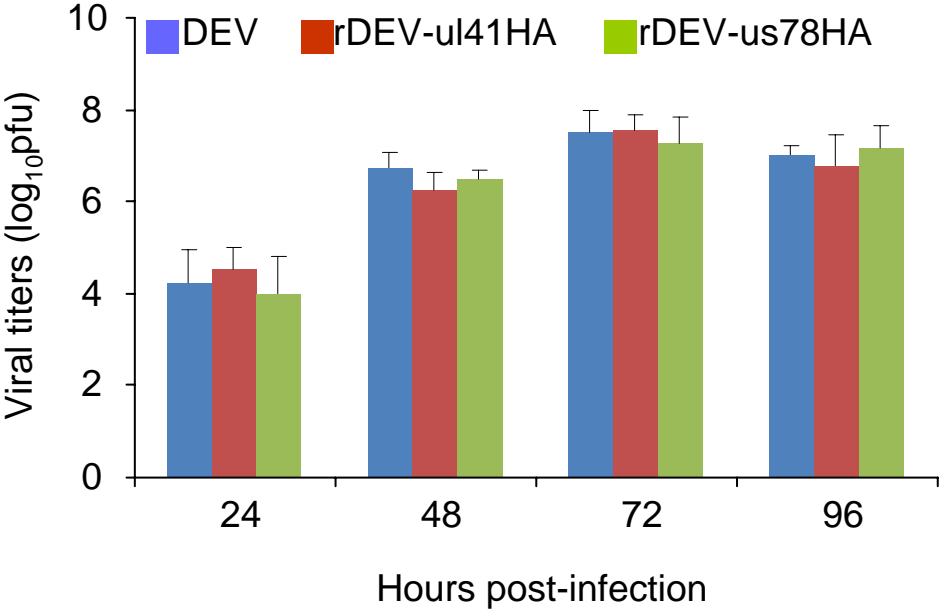


Fig. S3



Supplemental figure legends

Figure S1. Rescue of the DEV from over-lapping fosmid DNAs. **A.** Twenty-one fosmids containing DEV DNA fragments were selected from a DEV vaccine strain genome library. The position in the DEV genome and the lengths of the DNA fragments in these fosmids were confirmed by partial sequencing. **B.** Ten sets of DNA fragments from 4- or 5-fosmid combinations were used for the virus rescue. The DEV were regenerated from the fragment sets that are shown in italics and boldface. +, DEV specific CPE positive; -, DEV specific CPE negative.

Figure S2. Characterization of the rescued DEVs. **A.** The purified DNA genomes of the wild-type DEV and rescued DEVs (rDEV) were digested with EcoRI and BamHI and were separated by using pulsed field gel electrophoresis. Marker: λ DNA digested by Hind III. **B.** Chicken embryo fibroblasts (CEFs) were infected at an MOI of 0.01 with the wild-type DEV or rDEVs; cells were harvested at the indicated time points after inoculation and titrated in CEFs. Data presented are the means \pm standard deviations (SD) from three independent experiments.

Figure S3. Replication of the recombinant DEV viruses in CEFs. Chicken embryo fibroblasts (CEFs) were infected at an MOI of 0.01 with the wild-type DEV, rDEV-ul41HA, or rDEV-us78HA; cells were harvested at the indicated time points after inoculation and titrated in CEFs. Data presented are the means \pm standard deviations (SD) from three independent experiments.