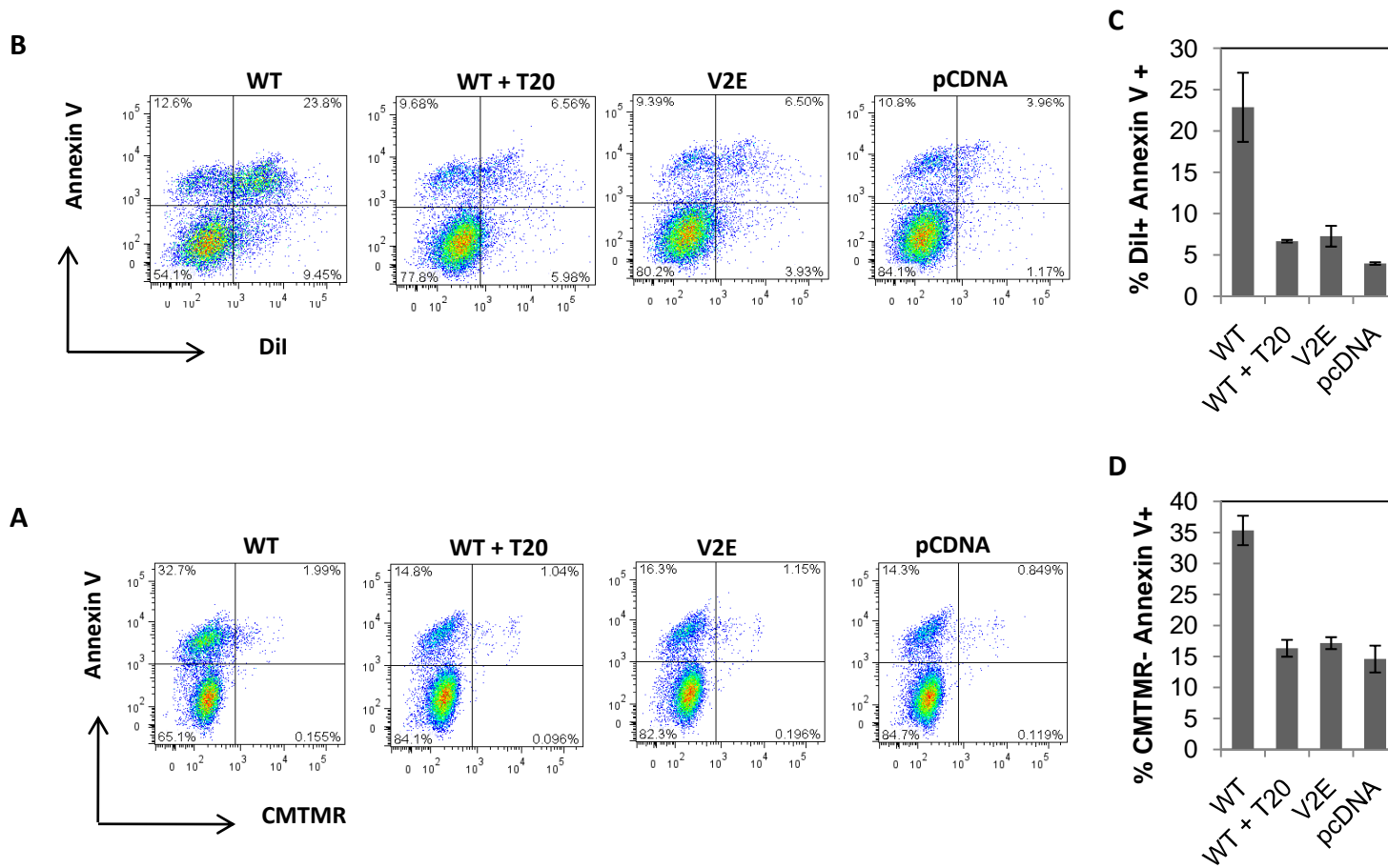


Supplemental Figure 1



Supplemental Figure 1: Apoptosis induction in bystander cells mediated by R5 Env in high CCR5 expressing cells is gp41 hemifusion dependent. HeLa Env expressing cells were labeled with lipophilic Dil (**A**) or cytoplasmic CMTMR (**B**) dyes and cocultured with unlabeled SupT-R5-H6. SupT1 cells were collected and analyzed for dye transfer (X axis) and apoptosis measured by Annexin V staining (Y axis) followed by flow cytometry. (**C**) Env mediated apoptosis is restricted to hemifused cells characterized as Dil+ Annexin V+ cells. (**D**) Apoptotic cells fail to take up cytoplasmic dye characterized as CMTMR- Annexin V+ cells. For both C and D, data represent Mean \pm SD of triplicate observations. All experiments were repeated three times with similar results.