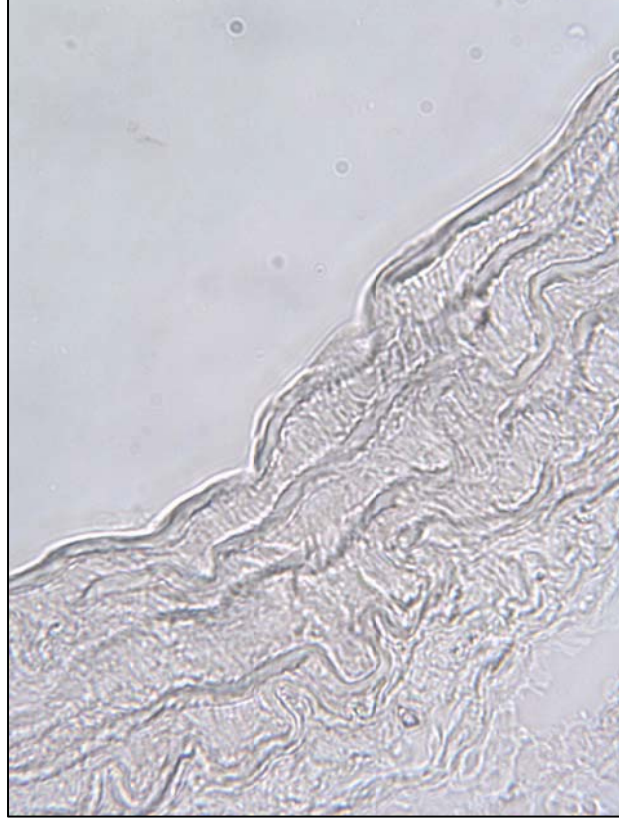
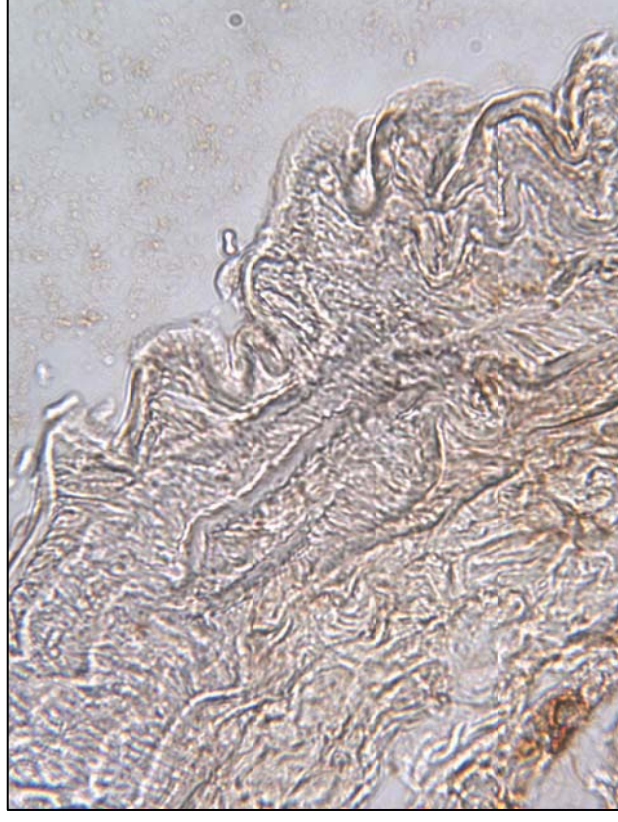


Supplemental Figure 2. Immunohistochemistry of Mouse Aortas for eNOS. Determination of eNOS pattern in KO mice.

No Primary Ab (63X)



Total eNOS (Upstate) 1:50 (63X)



Both slices of aorta above are from eNOS KO mice. See Figure 6F for the positive eNOS staining pattern detected in wildtype C57Bl/6 mice.