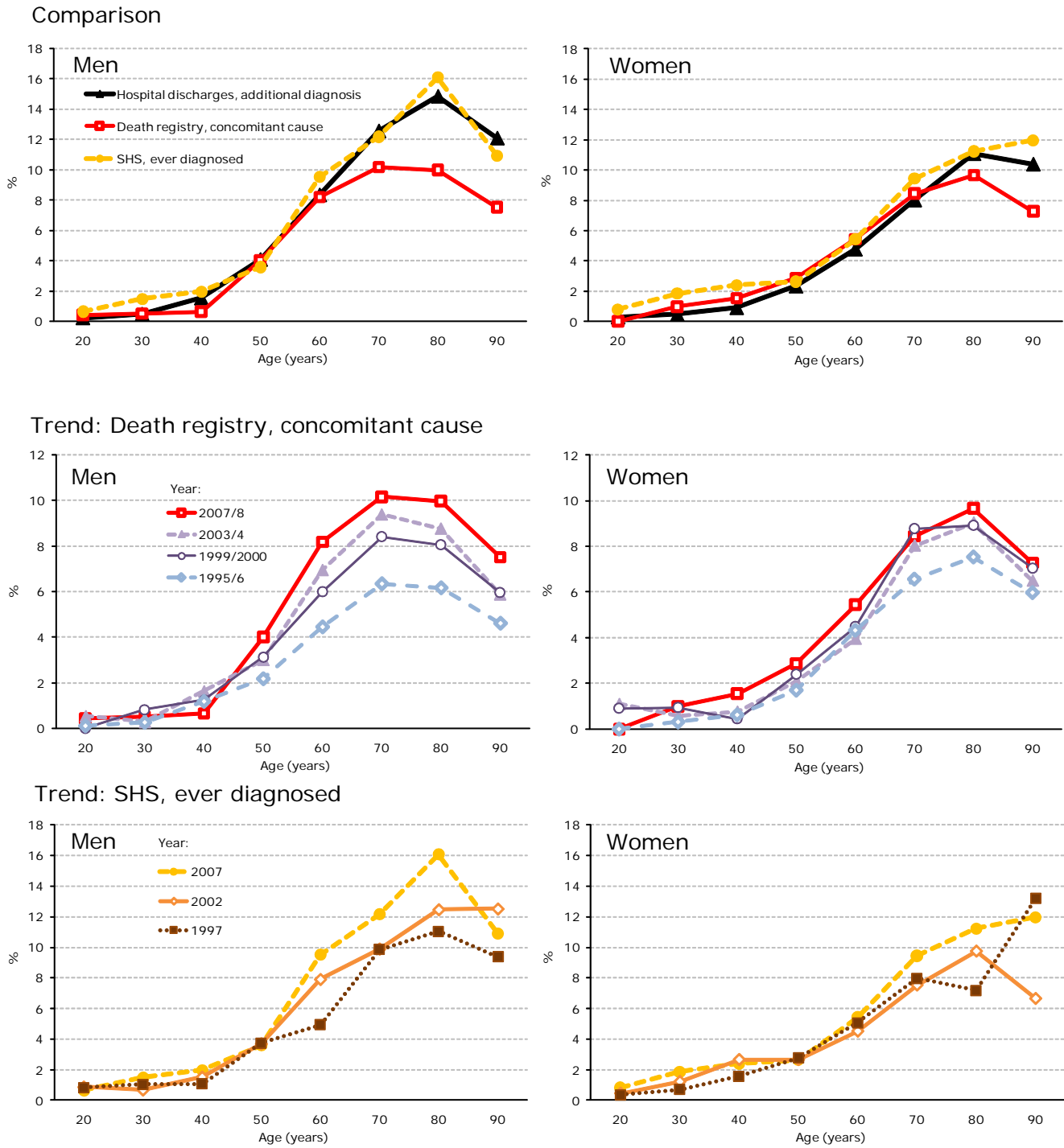


SUPPLEMENTARY DATA

Supplementary Figure 1. Prevalence of diabetes in Switzerland by sex and age class: Comparison of three different data sources 2007/8 and trends 1995-2008



Swiss Health Survey (SHS): 2007: N=18,665 (66% participation), 2002: N=18,655 (64%), 1997: N=12,707 (60%)
 Death registry: 2007/08: N=118,659, 2003/04: N=117,770, 1999/2000: N=121,013, 1995/96: N=122,986.