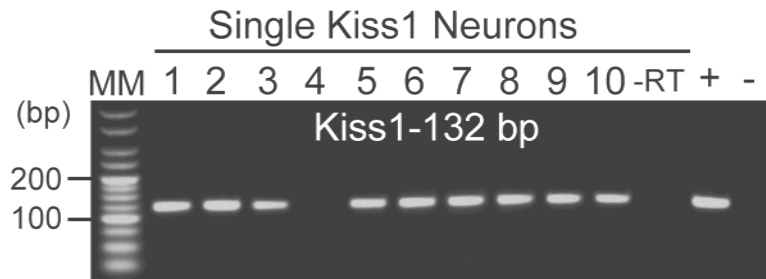


Supplemental Fig. 1. Confocal photomicrograph showing the distribution of GFP-expressing cells in the arcuate nucleus of a gonadectomized male *Kiss1-CreGFP* mouse. 3V = third ventricle.



Supplemental Fig. 2. A representative gel illustrating the expression of *Kiss1* mRNA in GFP-labeled neurons in the ARC of the male *Kiss1-CreGFP* mouse. The expected size for the PCR product is 132 base pairs (bp). In this example, a cell reacted without reverse transcriptase (-RT) was used as a negative control and did not express the *Kiss1* transcript. RNA was isolated from tissue comprising the medial basal hypothalamus (BH) and was used as positive (+, with RT) and negative controls (-, without RT). MM = molecular marker. GFP-labeled cells (31-41 cells from each of 3 animals for a total of 104 cells) were harvested and analyzed, and 96% of these cells were confirmed to be positive for *Kiss1* mRNA.