

Supplemental Figure and Table Legends

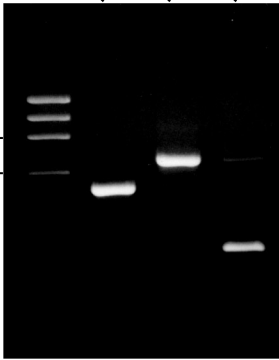
Supplemental Figure 1. *Pten* gene excision in thyroid DNA. Thyroid DNA was isolated from mice of the indicated genotypes and was analyzed for *Pten* gene excision by PCR as described in Materials and Methods. Product sizes are 511 bp for wild type, 682 bp for floxed, and 288 bp for excised *Pten*.

Supplemental Table 1. All amplicons are intron spanning except PPFP. The Pax8 primers are in exons 11 and 12, which are not present in PPFP.

Supplemental Table 2. Gene expression was analyzed by RT-qPCR and was normalized to Pgk1. For target genes other than PPFP, the mean normalized expression in the PtenFF;Cre control diet mice was set at 1 and results are expressed relative to that level. PPFP is not detected in PtenFF;Cre mice, and its expression in PPFP;PtenFF;Cre mice is presented normalized to Pgk1. Results are means \pm SDs, 5 to 8 mice per group.

PPFP;Cre
PPFP;PtenFF
PtenFF;Cre

872
603



Floxed
Wild type
Excised