

A

MG-132 (μM): 0 0 0.5 0.5
Wogonin (μM): 0 50 0 50

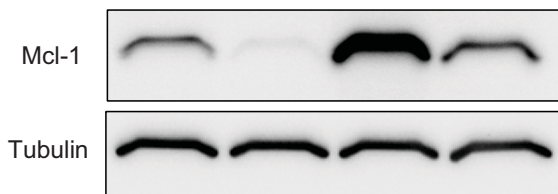
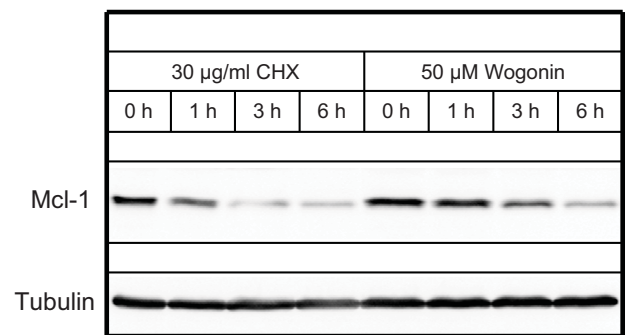
**B**

Figure S3. The effect of Wogonin on Mcl-1 is largely independent of proteasomal degradation.

A. Leukemic SP cells were treated with 50 μM Wogonin in the absence or the presence (pre-incubation for 0.5 h) of 0.5 μM MG-132. After 8 h treatment, cell lysates were subjected to Western blot analysis. B. CEM cells were treated with cycloheximide (CHX) or Wogonin for different time periods. Cell lysates were subjected to Western blot analysis. Data are representative of two independent experiments.