

Supplementary Figure S1

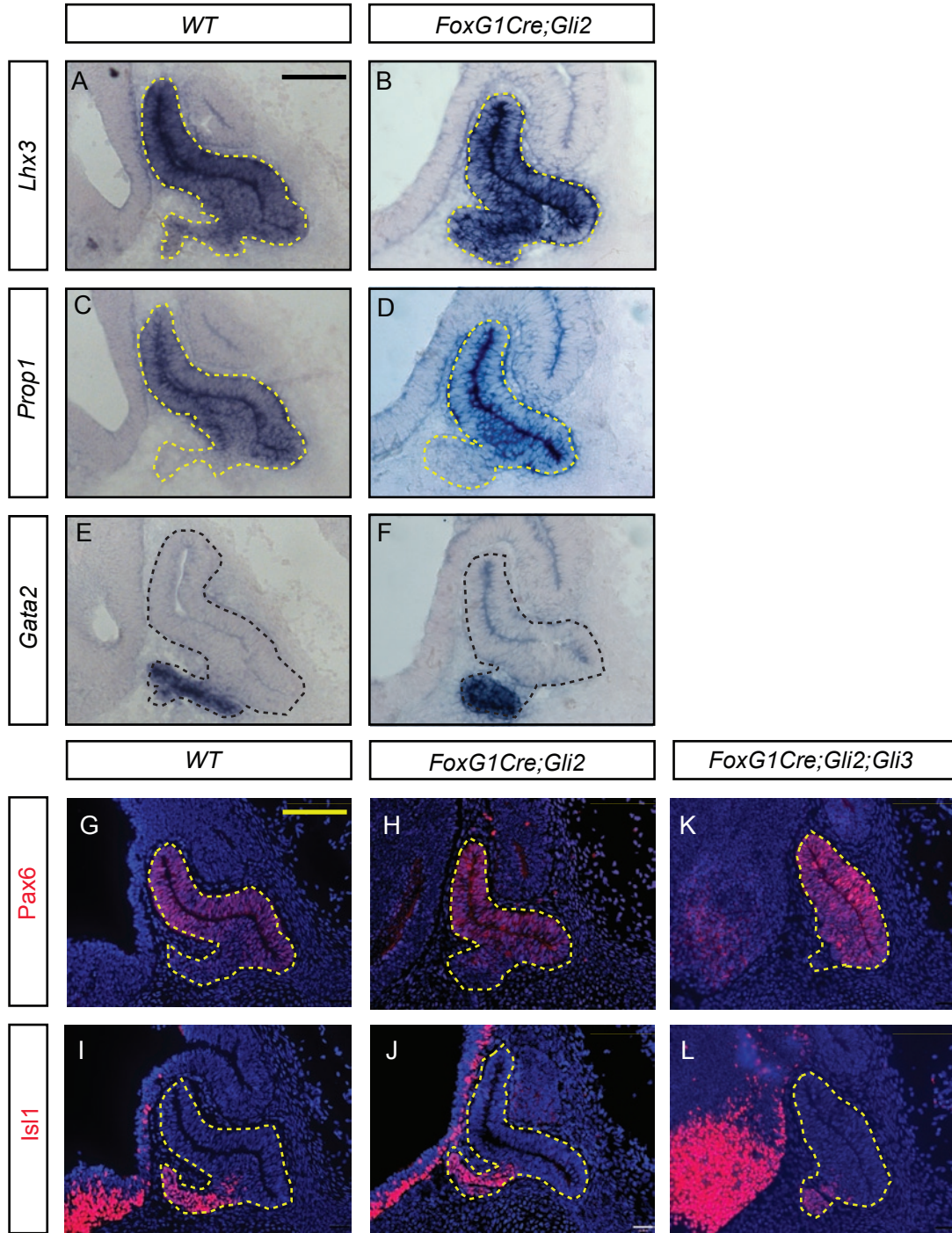


Fig. S1. Pituitary patterning is largely normal in conditional *Gli* mutants at E12.5. (A-F) RNA in situ hybridization of pituitary markers on WT and *FoxG1Cre;Gli2* embryos. (G-L) Immunostaining of different pituitary markers on WT, *FoxG1Cre;Gli2* and *FoxG1Cre;Gli2;Gli3* embryos. Scale bars: 100 μ m.

Supplementary Figure S2

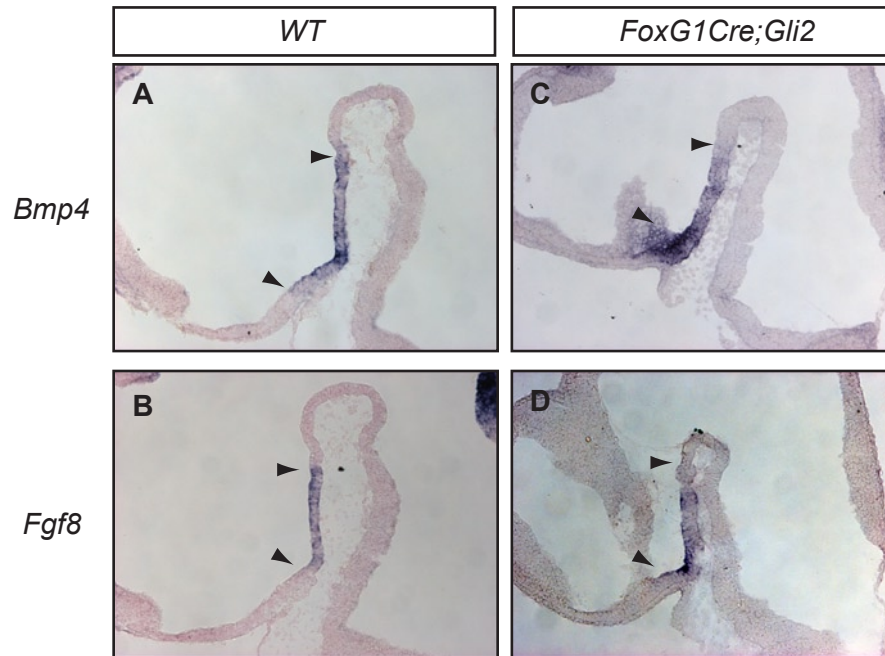


Fig. S2 Conditional disruption of *Gli2* using *FoxG1Cre* does not alter diencephalic expression of *Bmp4* and *Fgf8* at E9.5. (A-D) RNA in situ hybridization of *Bmp4* and *Fgf8* on sagittal sections of *WT* and *FoxG1Cre;Gli2* embryos. Arrowheads indicate expression limits.