

Figure S1 The uncropped images of all gel data presented in the paper are shown with molecular weight markers.

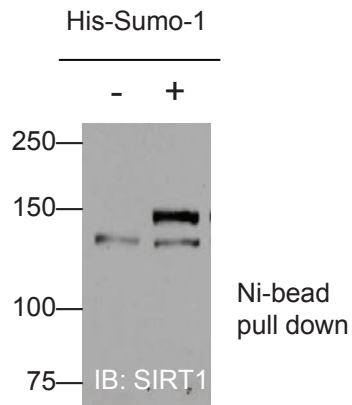


Fig. 1c

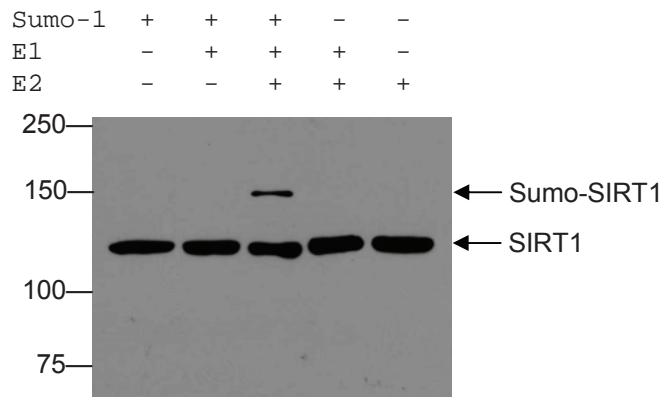


Fig. 1d

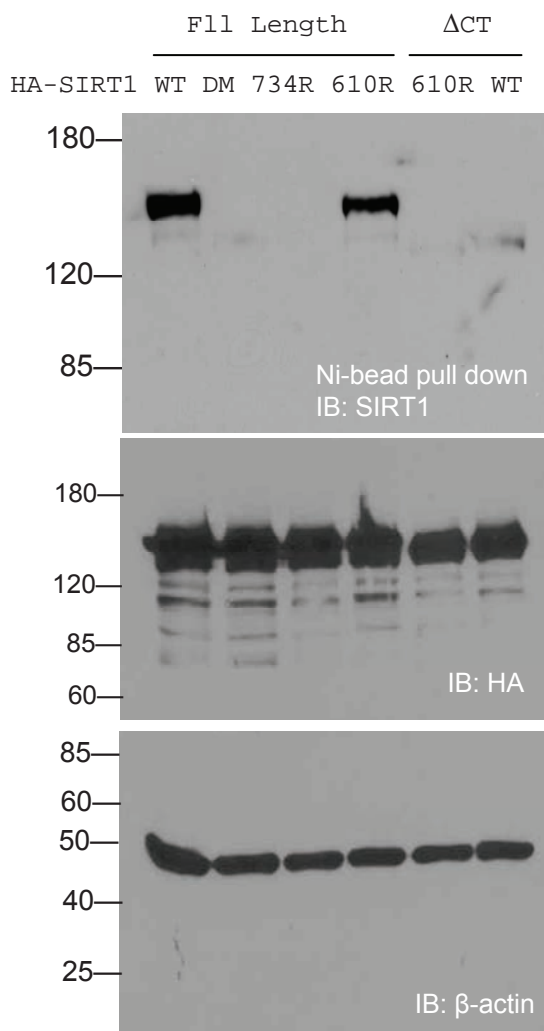


Fig. 2b

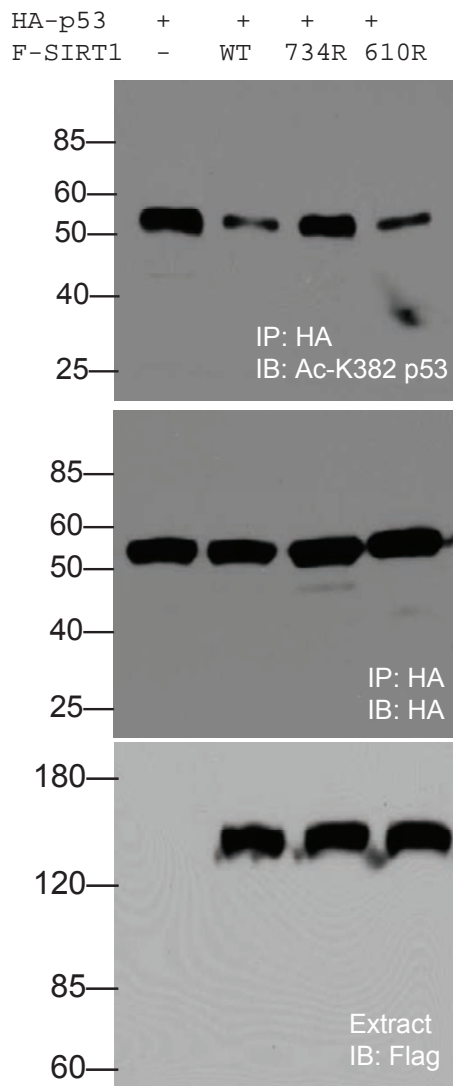


Fig. 2d

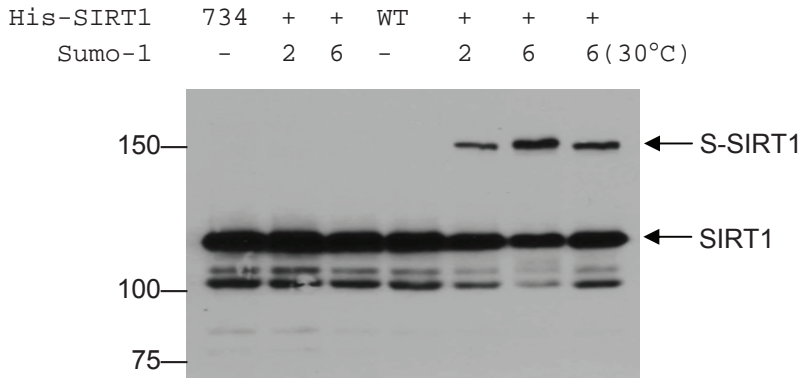


Fig. 3a

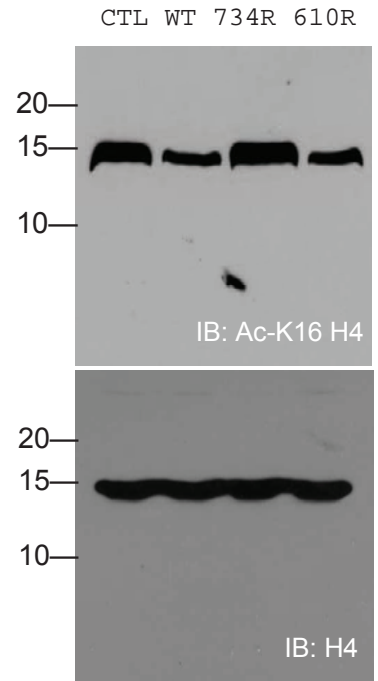


Fig. 3c

mSIRT1 (WT)	+	+	-	-
mSIRT1 (VK)	-	-	+	+
His-Sumo1	-	+	-	+

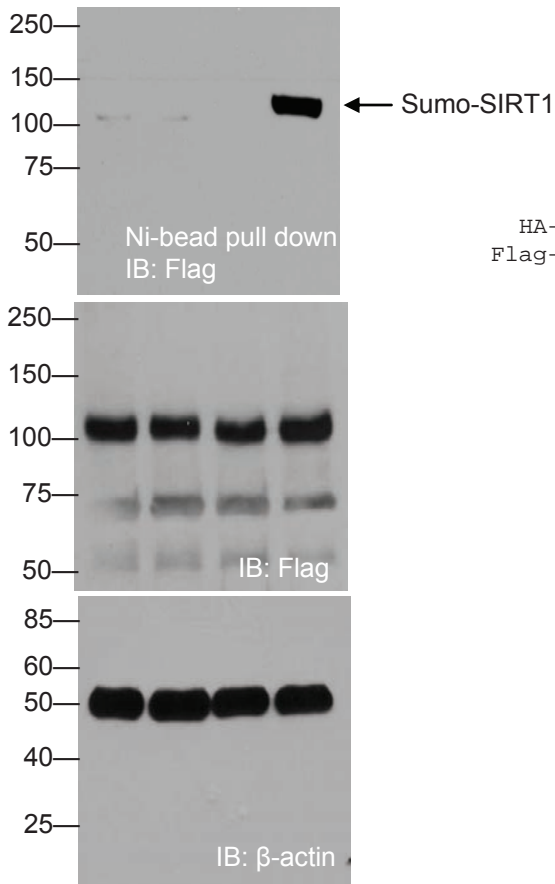


Fig. 3e

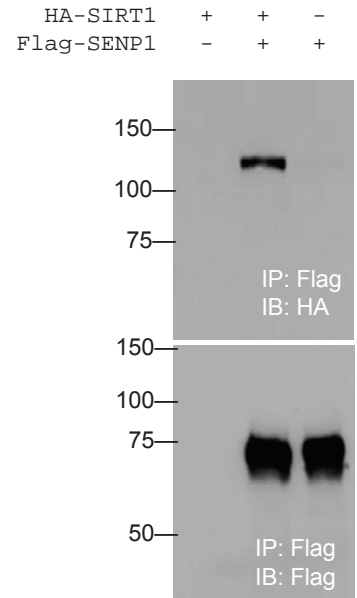
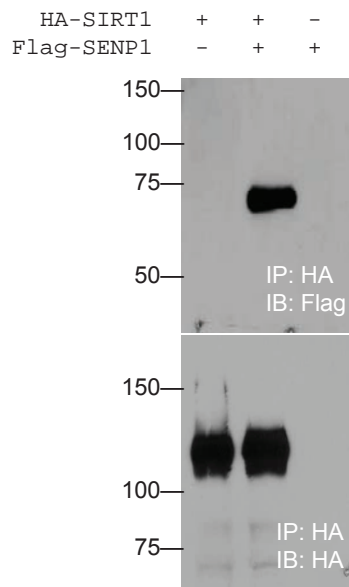


Fig. 4a

SUPPLEMENTARY INFORMATION

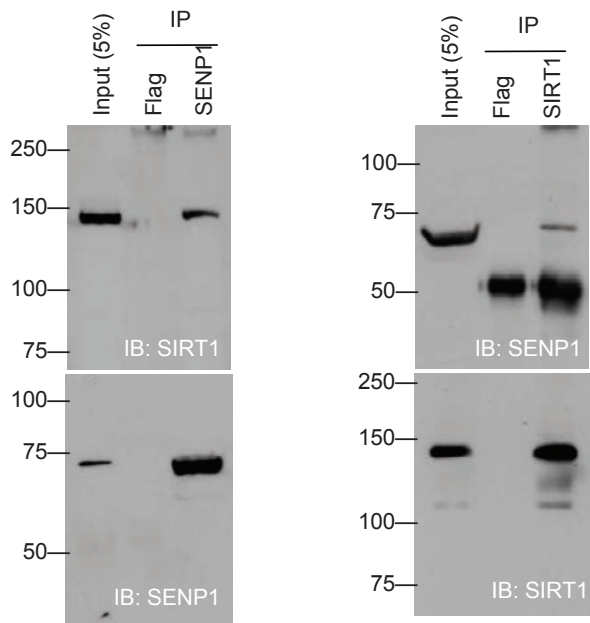


Fig. 4b (left)

Fig. 4b (right)

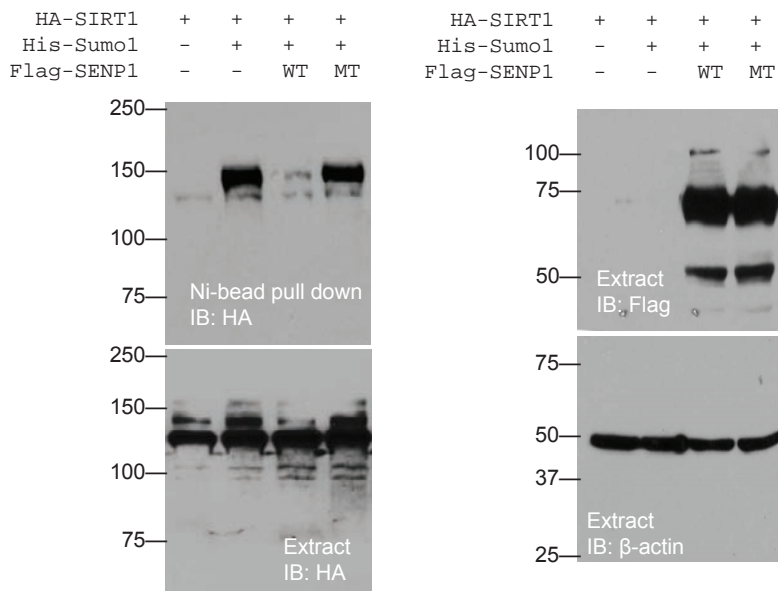


Fig. 4d

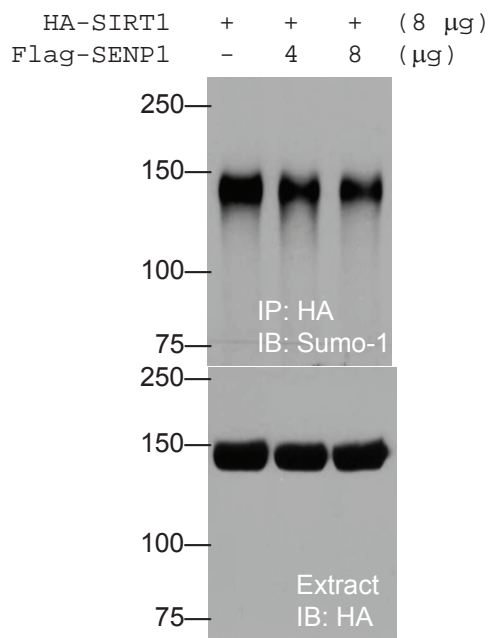


Fig. 4e

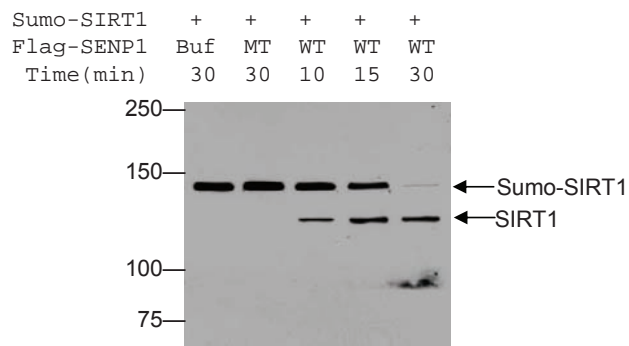


Fig. 4g

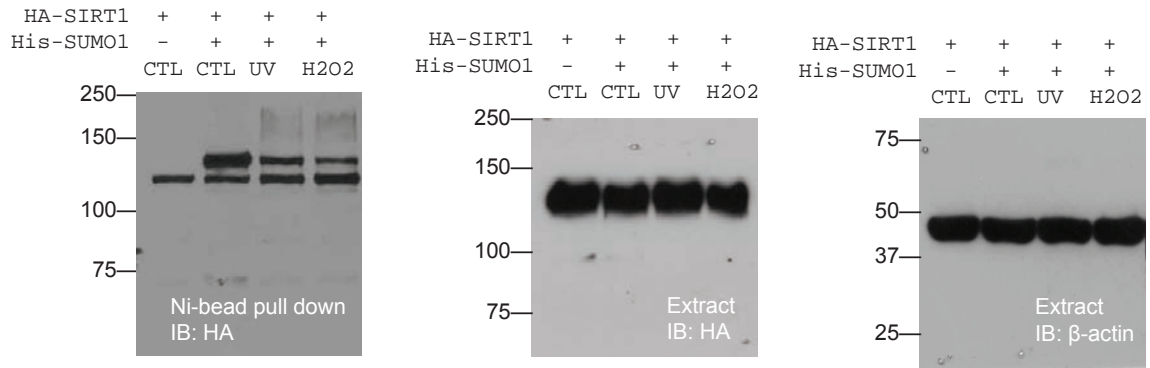


Fig. 5a

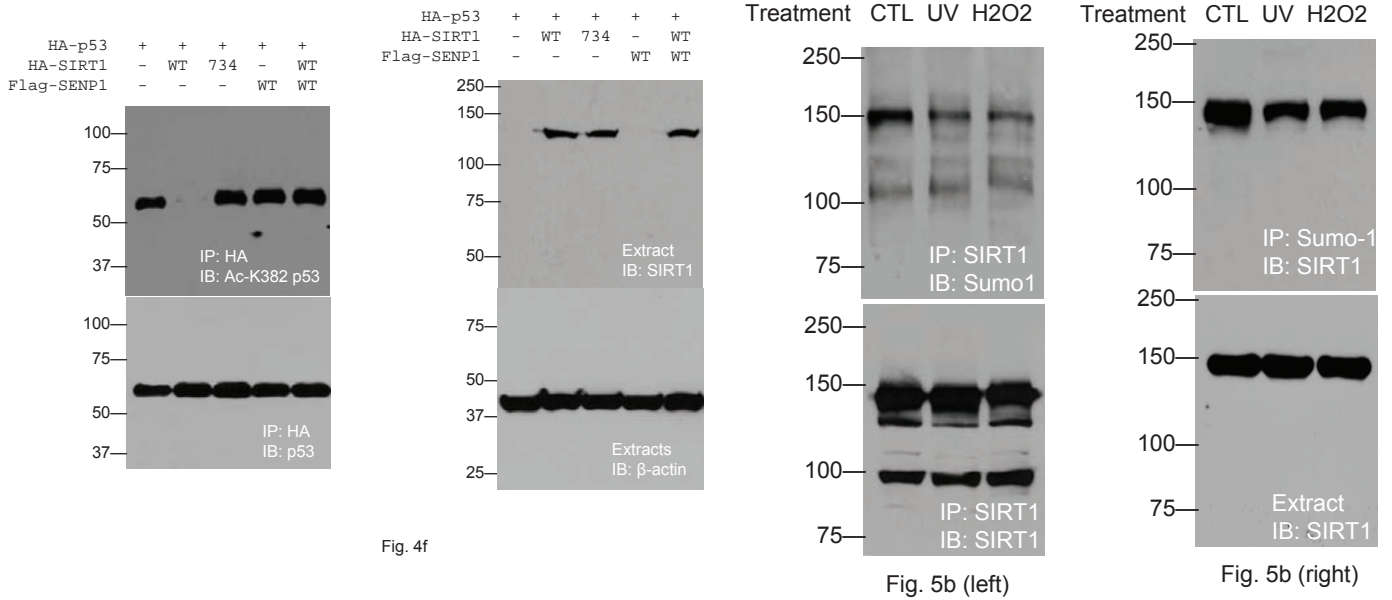


Fig. 4f

Fig. 5b (left)

Fig. 5b (right)

SUPPLEMENTARY INFORMATION

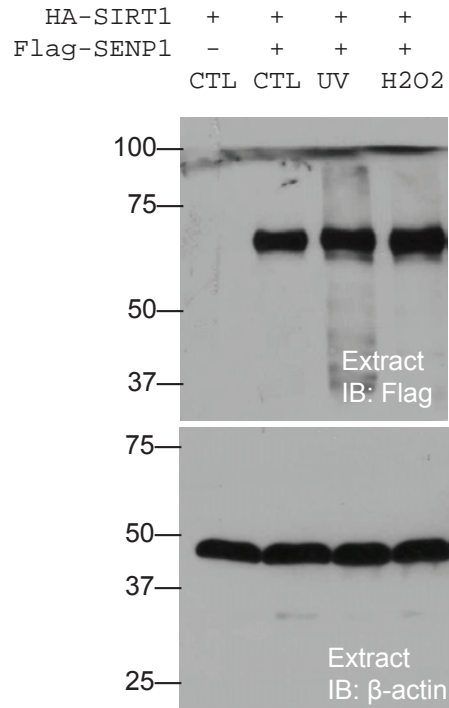
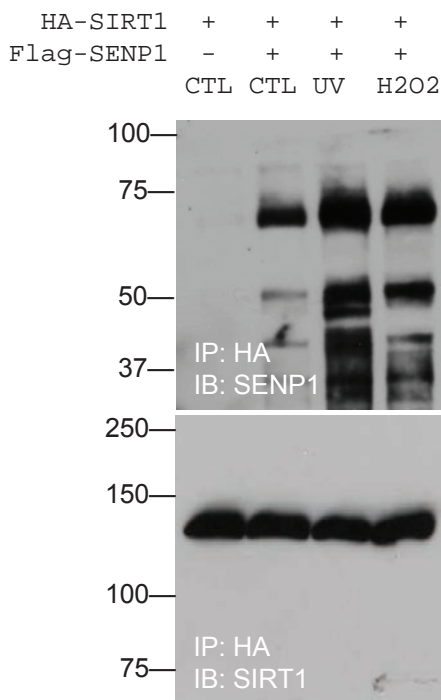
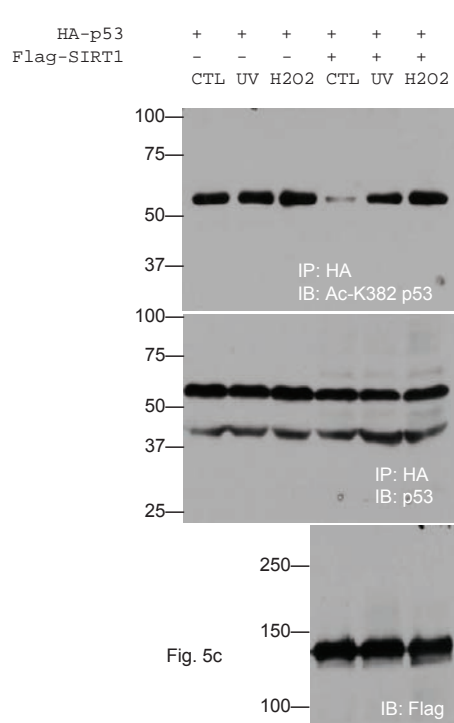


Fig. 6a

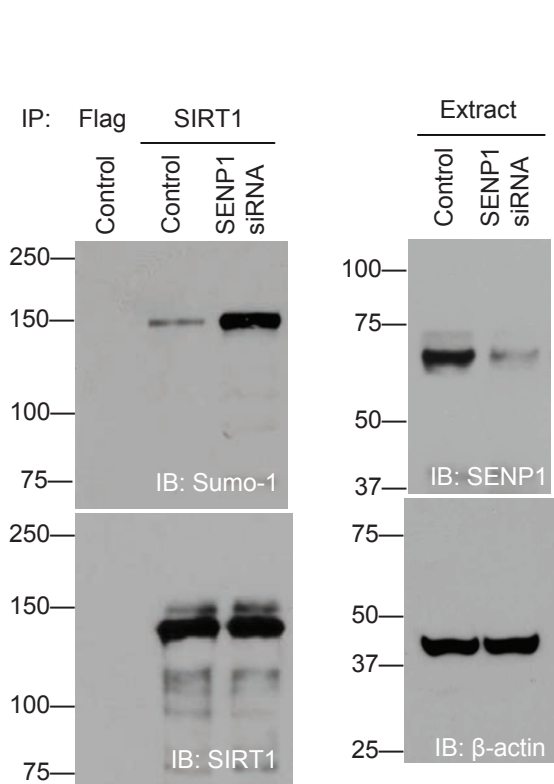


Fig. 6b

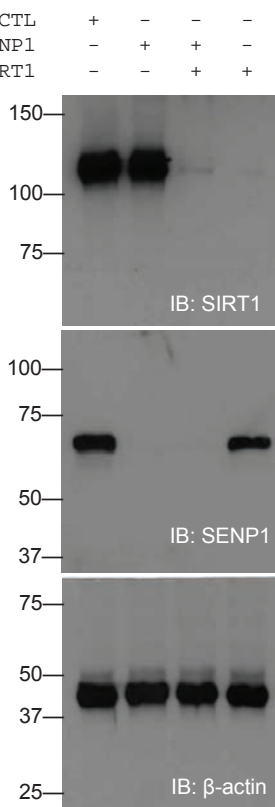


Fig. 6c

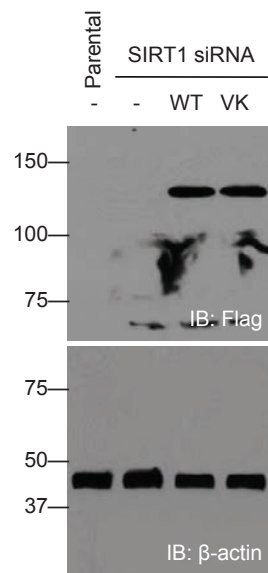


Fig. 6d

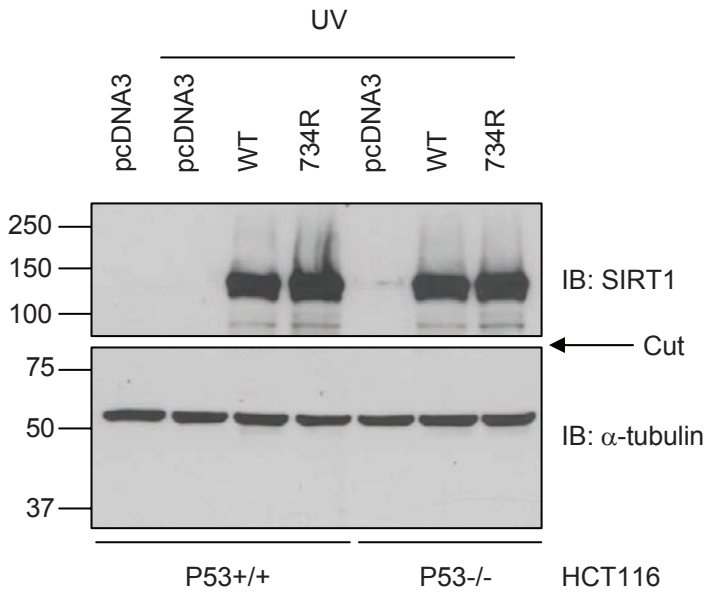


Fig. 7a

The full blot was cut. The top half was used for immunoblotting for SIRT1 and the bottom for α -tubulin.

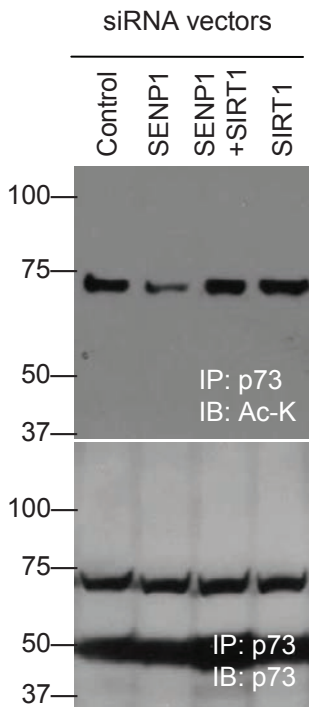


Fig. 7b

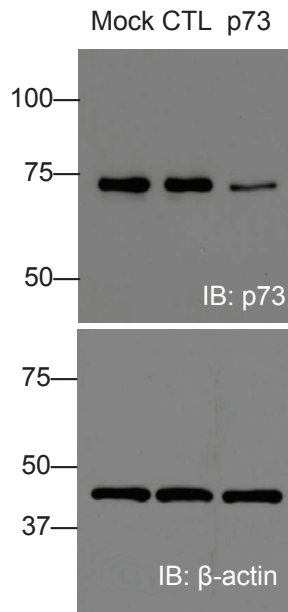


Fig. 7c