

Supplementary Figure S4

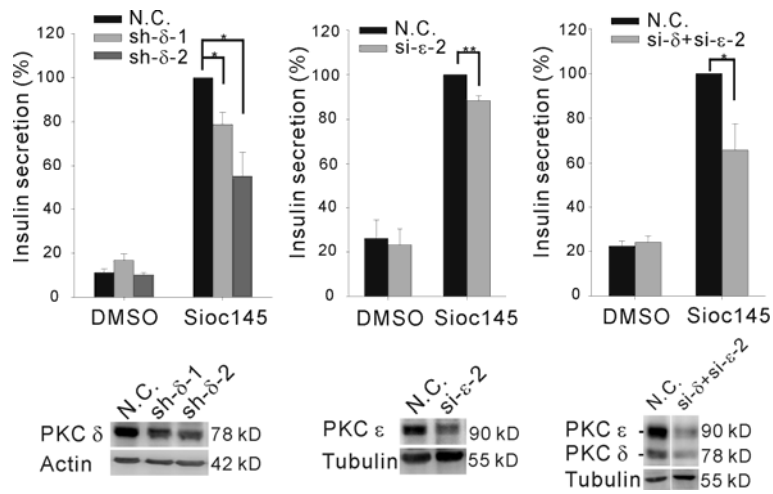


Figure S4 Selective activation of nPKCs is required for insulinotropic action of Sioc145.

Insulin secretion in PKC δ and/or ϵ downregulated cells. Cells transfected with indicated siRNA(s) or shRNA were stimulated with DMSO or 1 μ M Sioc145 at 16.7 mM glucose concentration. Insulin secretion from Sioc145-treated control cells (N.C.) were set as 100%. Error bars represent SEM from at least three independent experiments. *, $p < 0.05$; **, $p < 0.01$.