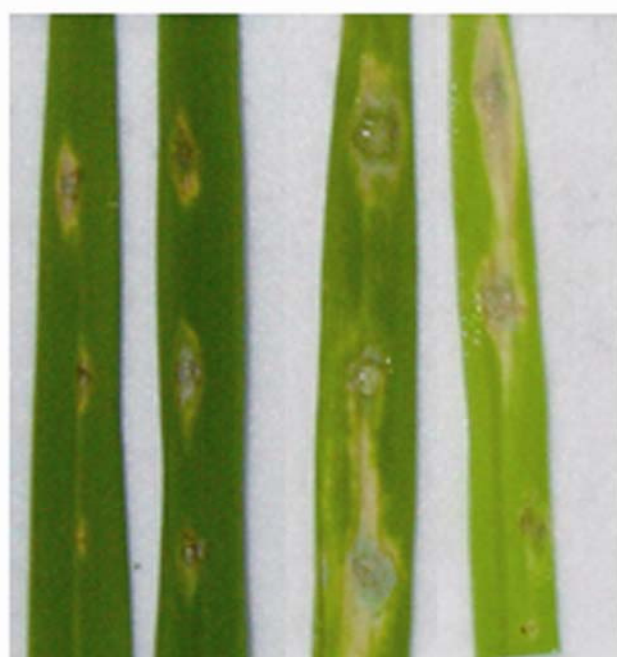
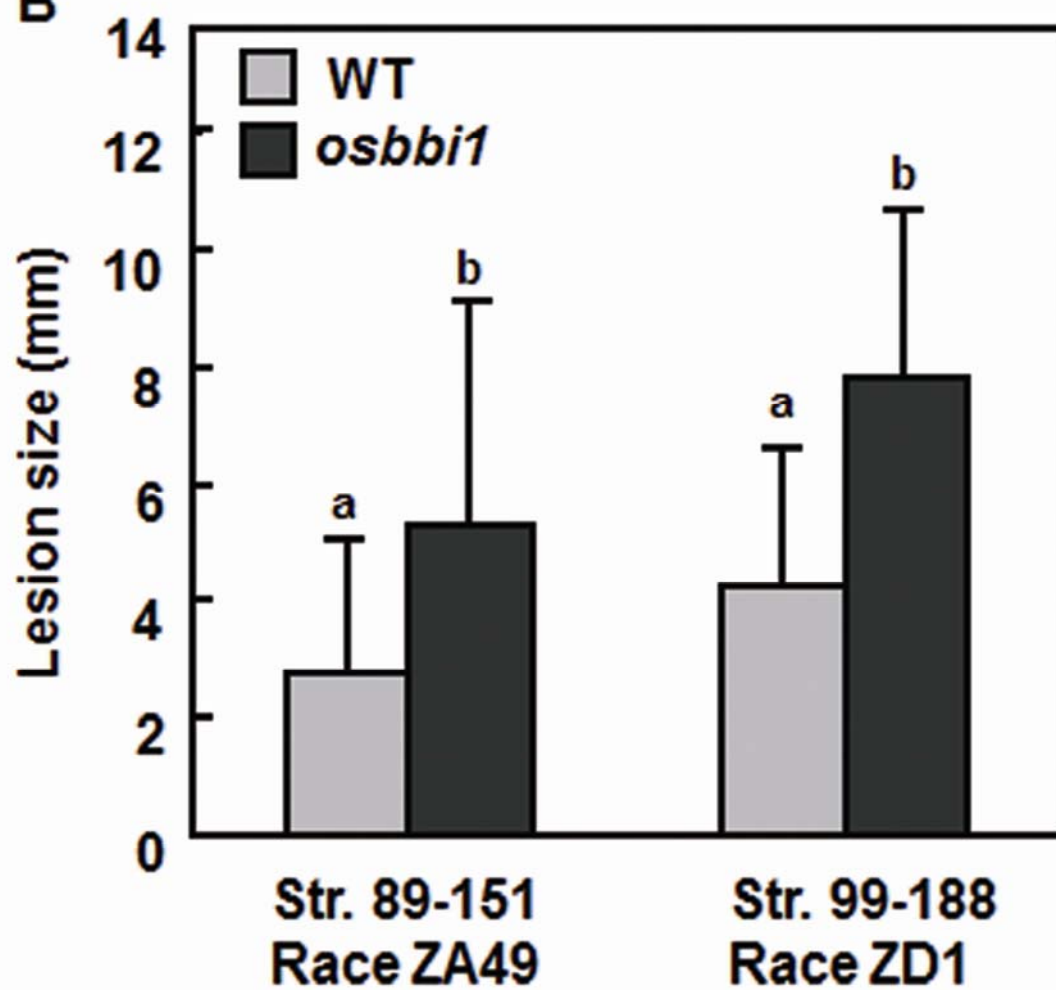


A**WT*****osbbi1*****B**

Supplementary information, Figure S2 Increased susceptibility of *osbbi1* plants to *M. oryzae* in detached leaf assays.

Leaves were detached from four-week-old plants and inoculated by placing drops of spore suspension of *M. oryzae*. Photo was taken (**A**) and lesion sizes (**B**) were measured at 5 DPI. At least 50 lesions from 10 representative diseased leaves of 10 plants were measured. Data presented are the means \pm standard errors from three independent experiments. Different letters above columns indicate significant difference at $P = 0.05$.