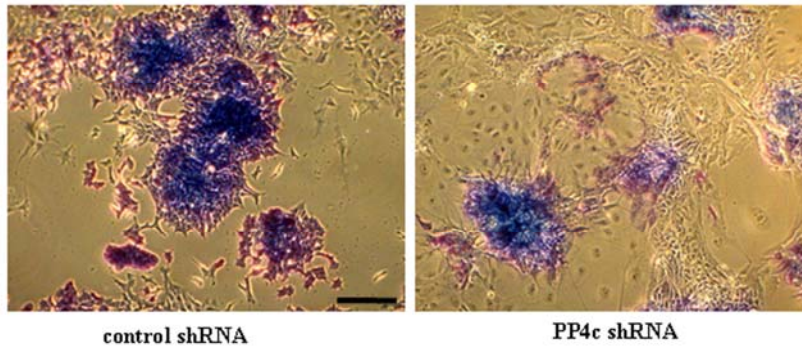
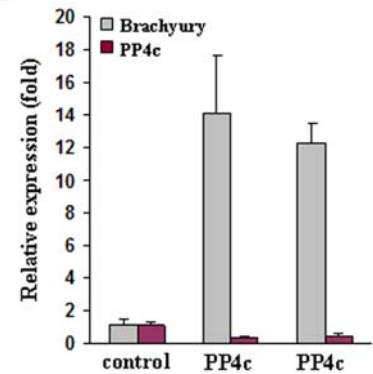


A**B**

Supplementary information, Figure S6 The knockdown for *PP4c* induces differentiation of ESCs.

(A) ESCs expressing control shRNA or *PP4c* shRNA were plated onto gelatin-coated 6-well plates and stained using alkaline phosphatase substrate. Scale bar, 100 μ m. ESCs lacking expression of *PP4c* exhibit reduced alkaline phosphatase staining and lead to morphological changes. (B) *Brachyury* expression is induced by knockdown of *PP4c*. Two independent ESC lines expressing *PP4c* shRNA were cultured in ESC medium containing LIF. Expression of *brachyury* and *PP4c* was analyzed using quantitative real-time PCR. Data were normalized to that of *gapdh*, and are presented as the mean \pm S.D. from three independent experiments.