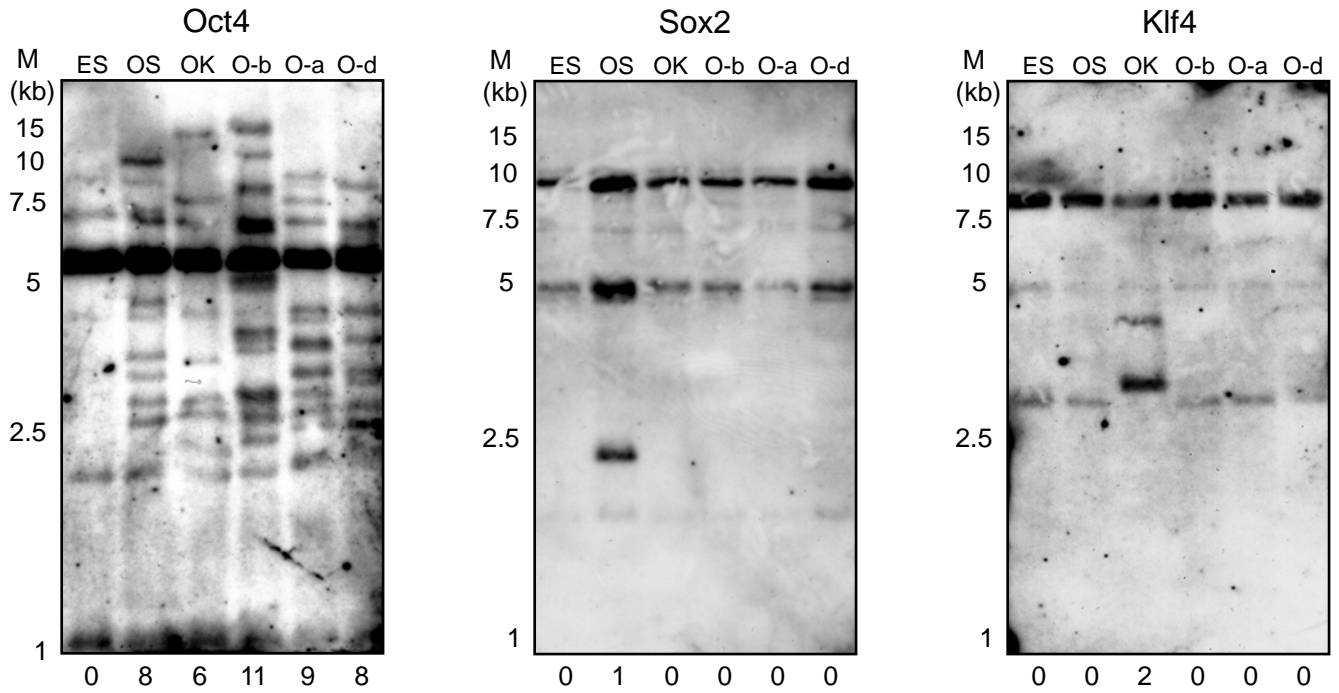
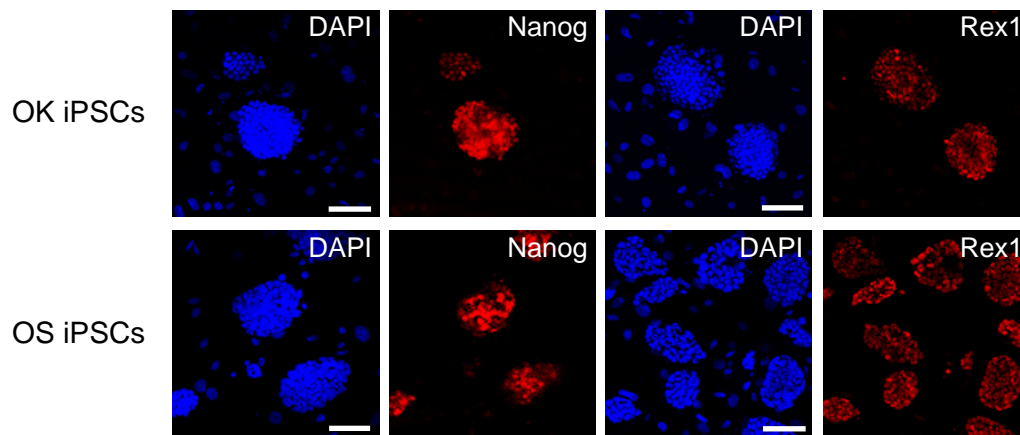


# Figure S8

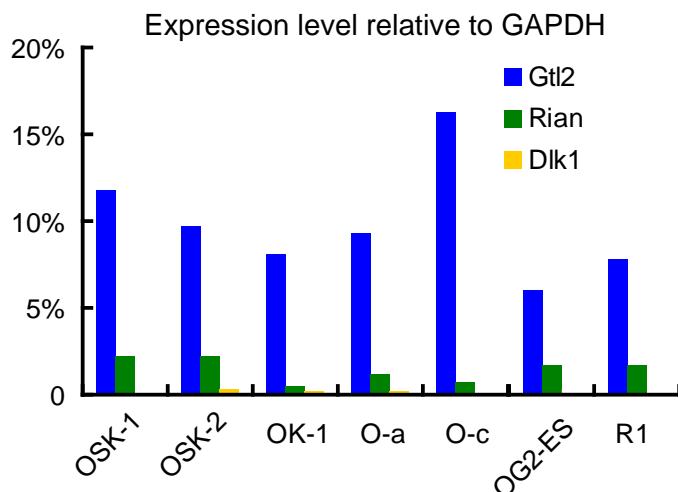
## A



## B



## C



## D

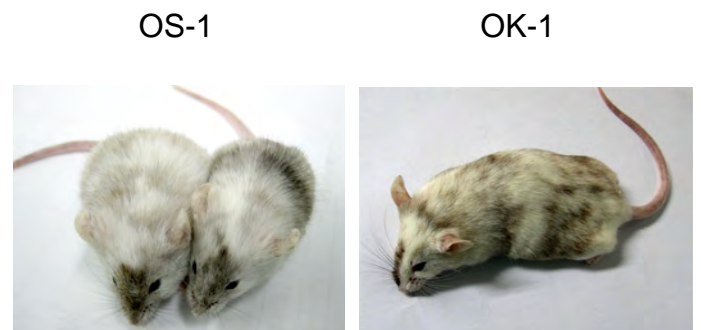


Figure S8. iPSCs induced by Oct4/Klf4 (OK) or Oct4/Sox2 (OS) are pluripotent. (A) Southern blotting analysis of indicated colonies. Number of transgene integration were scored and shown at the bottom. (B) OK and OS iPSCs express Nanog and Rex1. Scale bar, 100 $\mu$ m. (C) Imprinted genes expression of iPSC lines derived in iCD1 were examined by qRT-PCR. (D) Chimeric mouse generated from OS/OK iPSC lines were responsible for the agouti coat color.