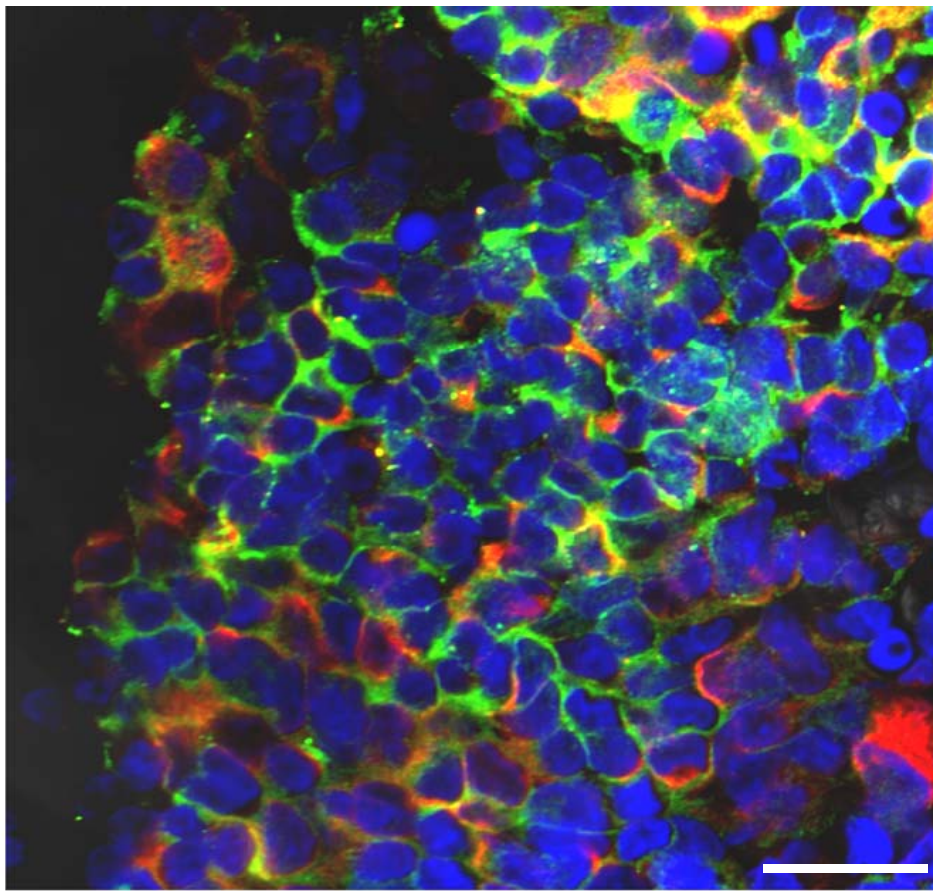
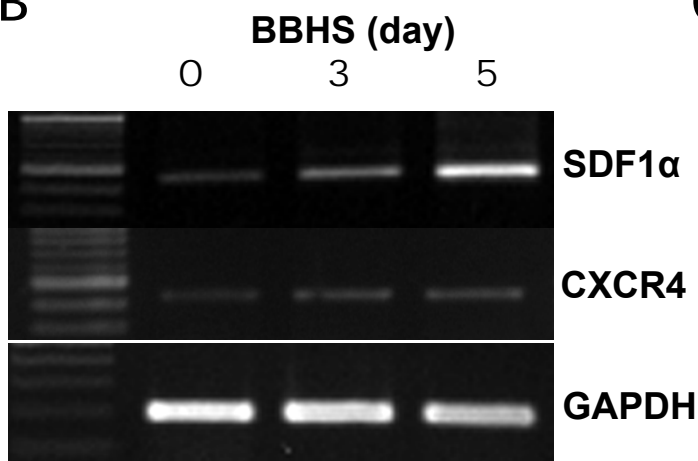


Supplementary information, Figure S12

A SDF-1(red) & CXCR-4(green)



B



C

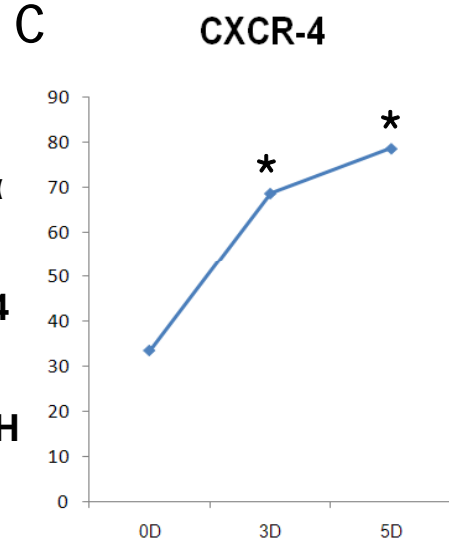


Figure S12 (A) CXCR4 expression and SDF-1 secretion of BBHS on day 5. Scale bar, 20 μ m. Nuclei were counterstained with To-pro 3. (B) Fresh peripheral blood MNC and BBHS culture at day 3, 5 were subjected to RT-PCR for SDF1 and CXCR-4 gene expression. (C) Flow cytometry analysis of CXCR-4 among fresh MNCs and in BBHS on culture days 3 and 5 (n=4).