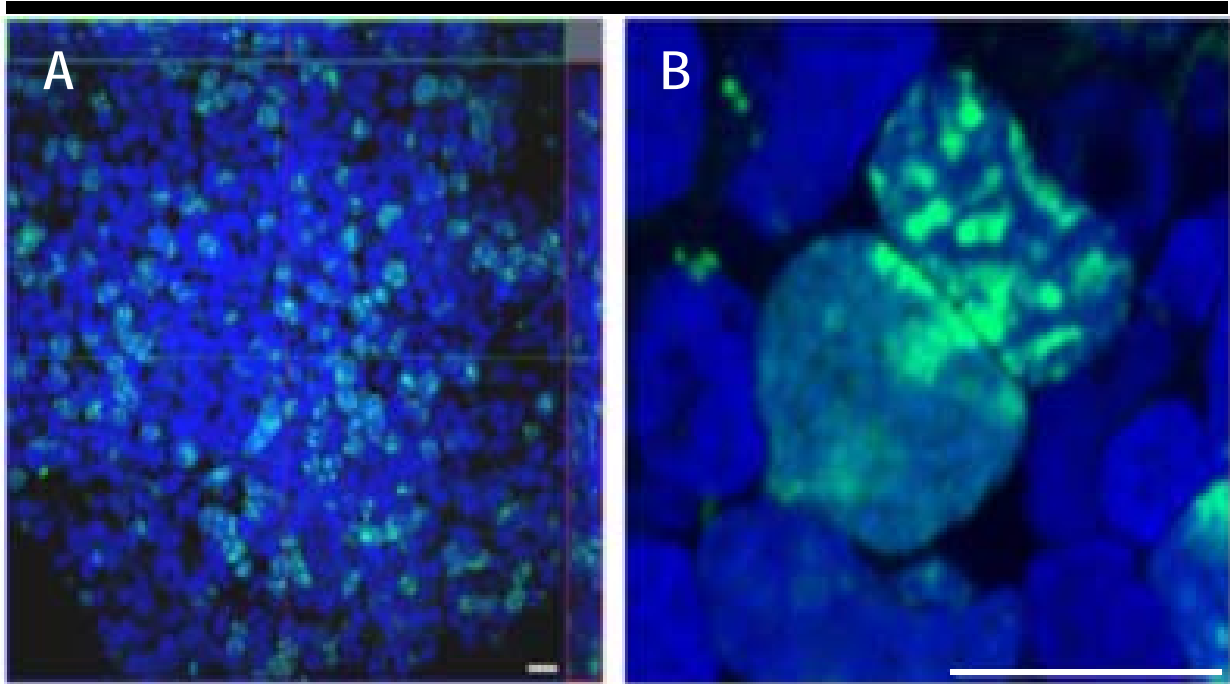


Supplementary information, Figure S4

Ki-67



CD34

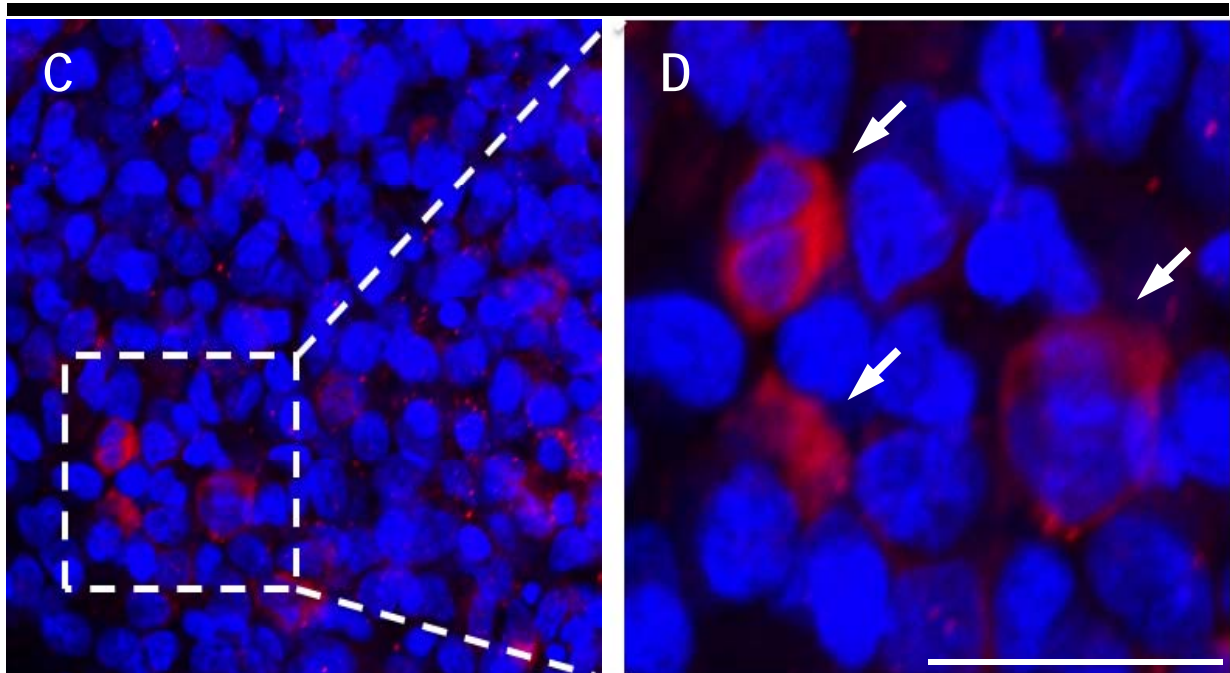


Figure S4 HSPC localization and expansion in BBHS . (A) Ki-67(+)-proliferating cells in BBHS. (B) Ki-67(+) cell undergoing mitosis. Scale bar, 10 μ m. (C) CD34-positive cells(red) in BBHS. (D) High power field of CD34-positive cells in BBHS. Arrows indicate CD34-positive cells in BBHS. Nuclei were counterstained with To-pro 3 (blue). Scale bar, 20 μ m.