

Figure S1. KT 1 cells were treated with either 0.5 μ M IM for 8 hours or 250 IU/mL of IFN α for 8 hours, or a combination (4 h + 4 h) and viability analyzed by MTT assay.

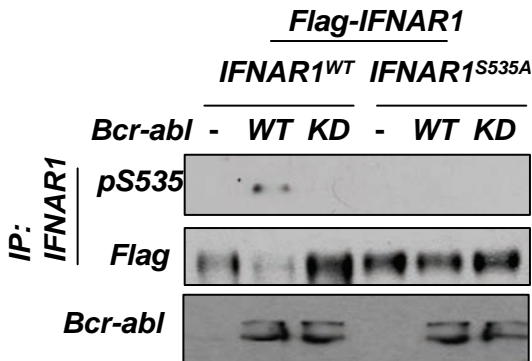


Figure S2. Expression of wild type (WT) p210-Bcr-Abl but not of its kinase deficient (KD) mutant in HeLa cells downregulates co-expressed Flag-IFNAR1 but not its ubiquitination-deficient S535A mutant.

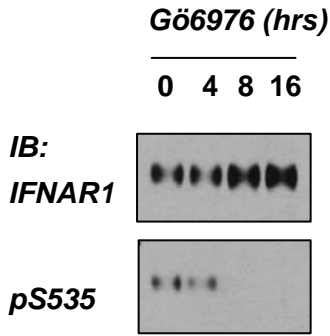


Figure S3. Treatment of KT1 cells with PKD inhibitor Gö6976 decreases IFNAR1 degraon phosphorylation but increases the levels of endogenous IFNAR1 (measured by IP-IB).

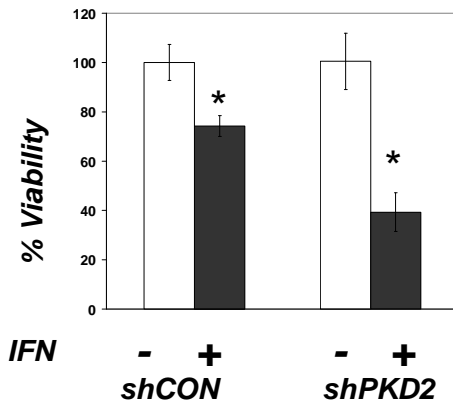


Figure S4. KT1 cells are more sensitive to interferon treatment following knockdown of PKD2 – MTT assay; * $p=0.0051$