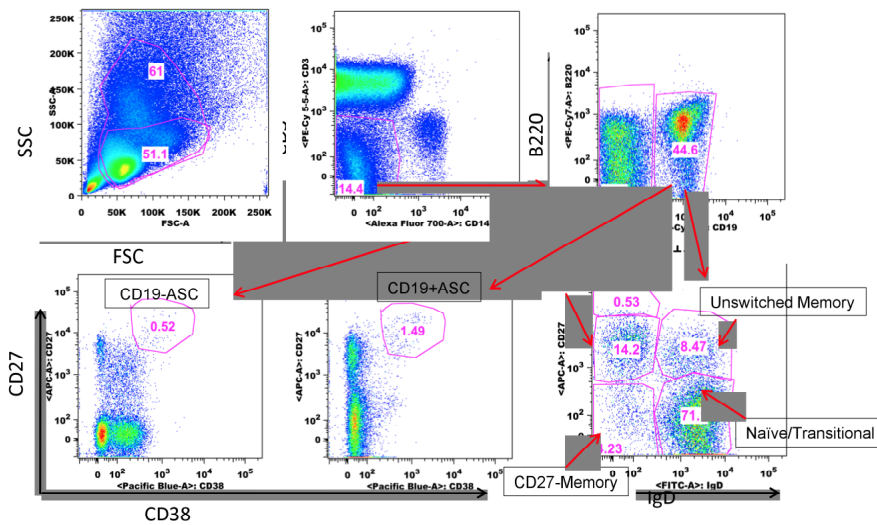




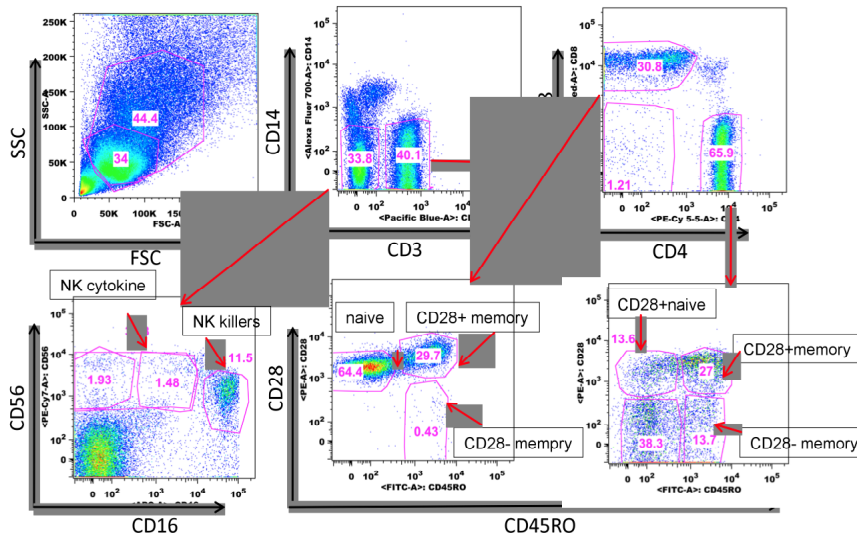
### The Effect of Steroid Use in Hospitalized Adults With Respiratory Syncytial Virus-Related Illness

F. Eun-Hyung Lee, MD; Edward E. Walsh, MD; and Ann R. Falsey, MD



**e-Figure 1A.** Representative sample of 11-color flow cytometry for B cell subsets.

*Online supplements are not copyedited prior to posting.*



**e-Figure 1B.** Representative sample of 11-color flow cytometry for T cell and NK subsets.

*Online supplements are not copyedited prior to posting.*