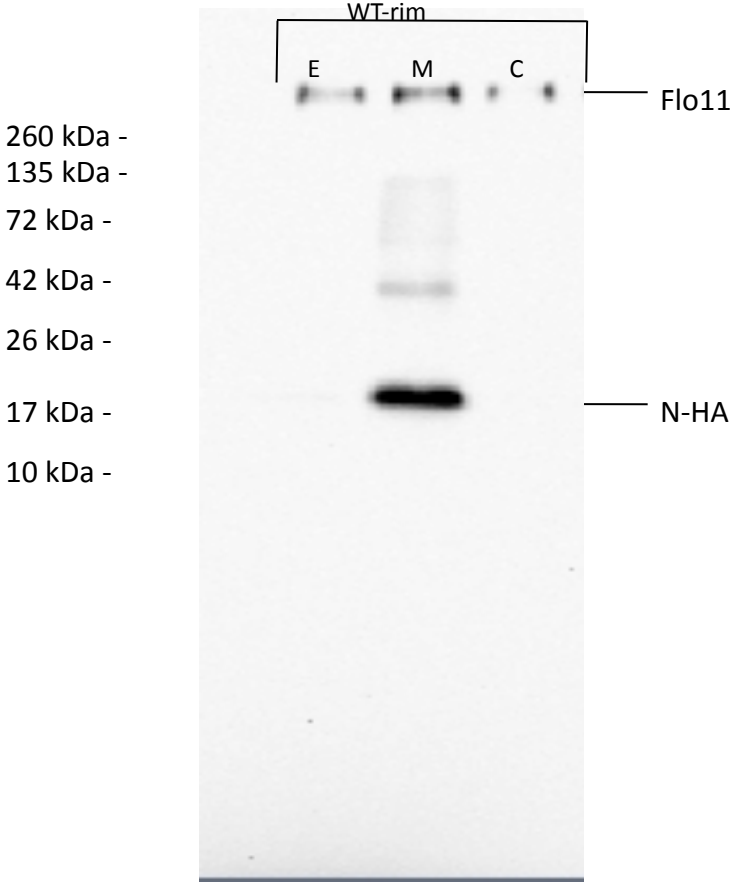


Supplemental Figure 1



Supplemental Figure 1. The N-terminal HA-tagged band is ~17 kDa. The different fractions of the rim cell population from wild-type cells expressing Flo11-HA^{30,1015} were separated by SDS-PAGE on a 20% PAG. The strong lower band (N-HA) is ~17 kDa, while the faint upper band is ~37 kDa.