

Figure S2.

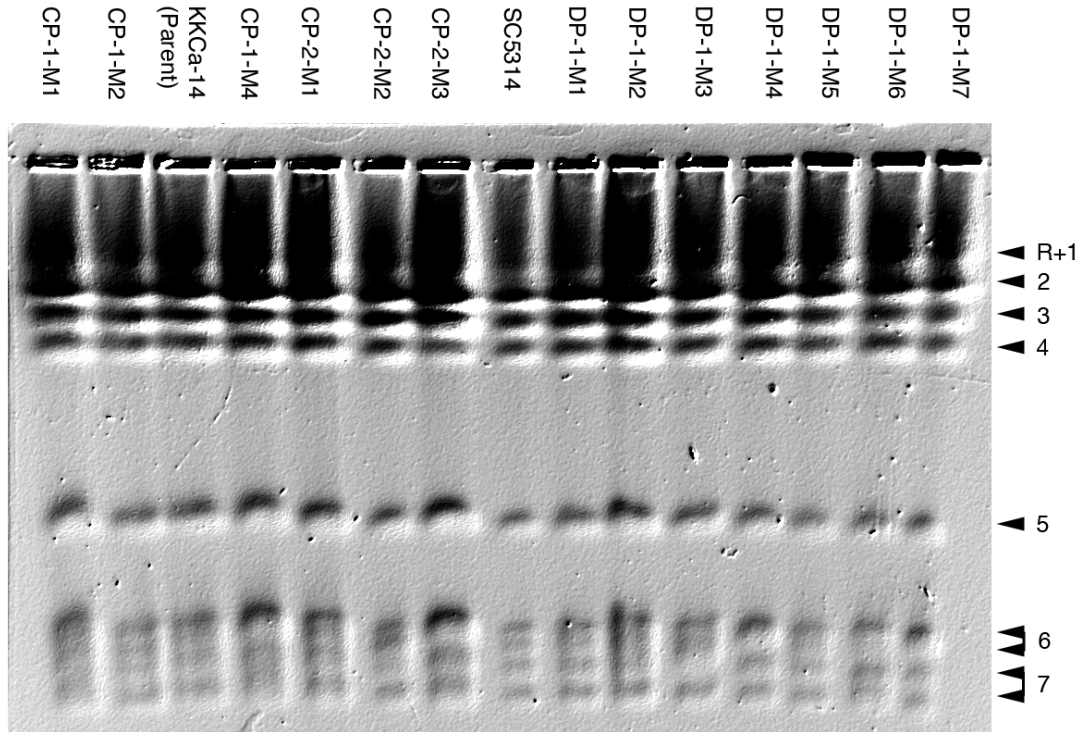


Figure S2. Karyotype analysis using CHEF gel separation of whole chromosomes. Separation of whole chromosomes by CHEF gel electrophoresis and detection of chromosomal DNA by ethidium bromide staining. Identity of different chromosomes is indicated on the right. Size differences between chromosomes R and 1 are not resolved using the electrophoresis conditions used here.