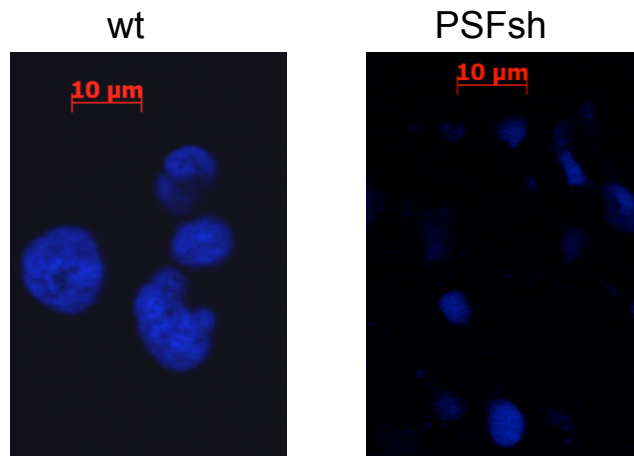
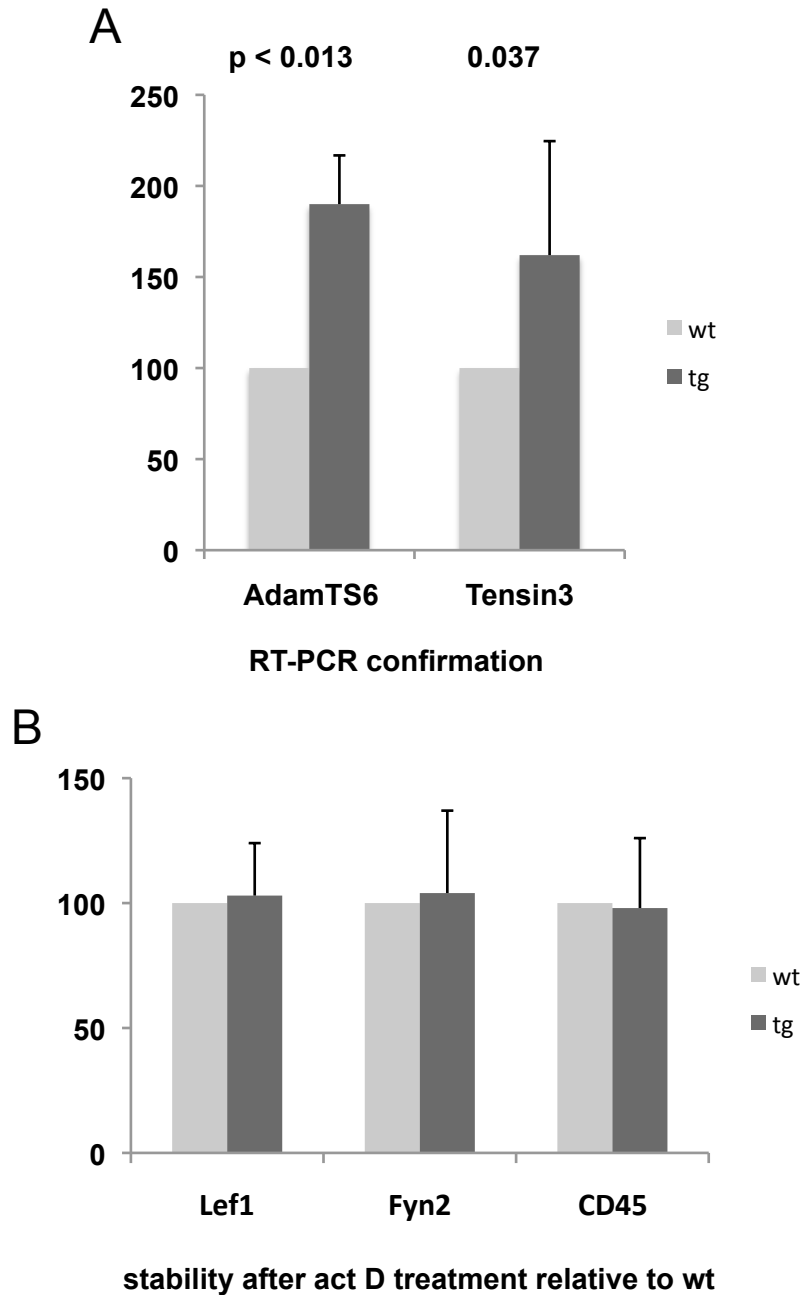


Supplemental Figure 1: (A) Sequence of pre-miR30-based sh-PSF (adapted from Rao and Wilkinson 2006). (B) Schematic of expression constructs for shPSF. (C) Expression of Flag-tagged PSF co-transfected with each of the shPSF expression constructs.

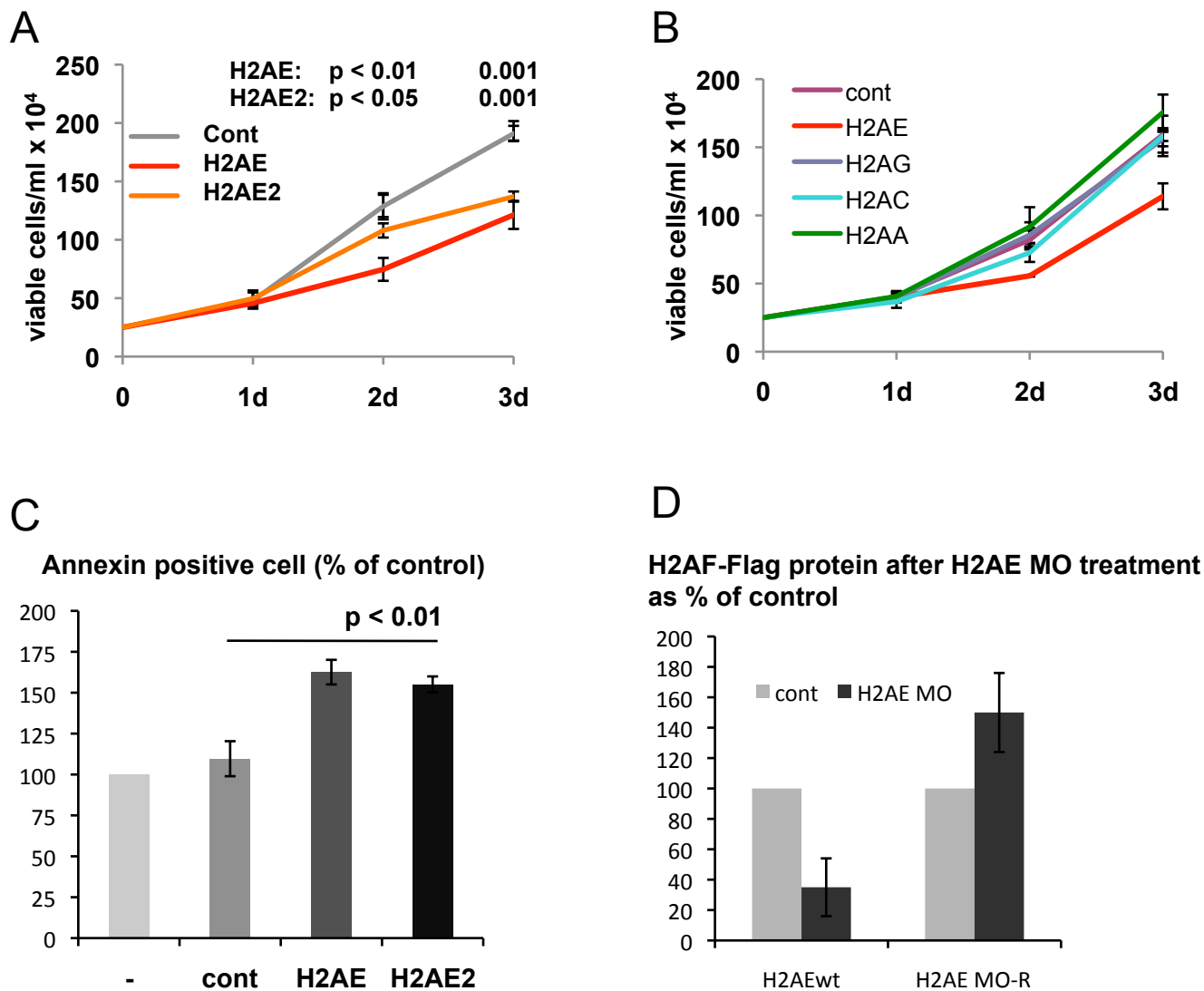


DAPI staining of wt or PSF cells

Supplemental Figure 2: DAPI staining of JSL1 cells stably transfected with the Ex-sh30-PSF construct.



Supplemental Figure 3: (A) RT-PCR analysis of transcript levels of AdamTS6 and Tensin3 in WT and Tg#45 thymi. (B) RT-PCR analysis of transcript levels of three genes unchanged in Tg#45 thymi, following culture with actinomycin D for 24 hours.



Supplemental Figure 4: (A) Cell counts up to 3 days after transfection with 2 different translation-blocking morpholino oligos (MOs) against H2AE or unrelated control (cont). (B) Cell counts up to 3 days after transfection with MOs against the four H2A variants or unrelated control (cont). (C) Annexin staining of cells following transfections with each MO against H2AE or unrelated control (cont). (D) Quantification of western blot in panel 4B.