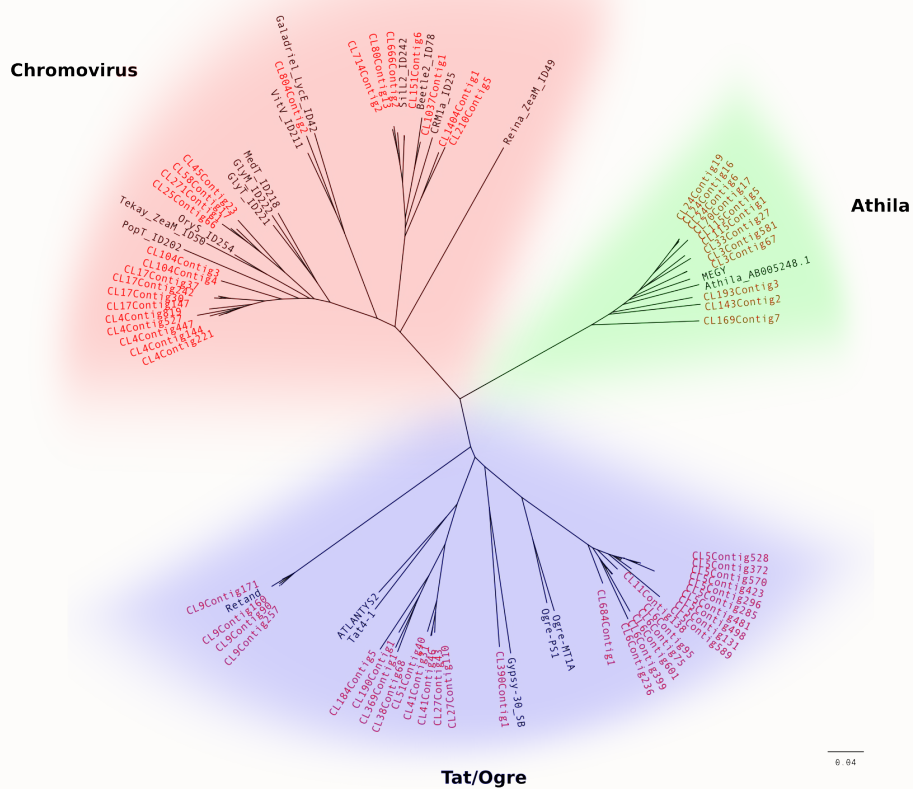


**A****B**

**Figure S2.** Phylogenetic analysis of *Silene latifolia* retrotransposons based on RT sequences. Unrooted phylogenetic trees of Ty1/copia elements (**A**) and Ty3/gypsy elements (**B**). Contigs assembled from 454 reads are highlighted and their names indicate cluster (CL) of origin.