

Appendix 3: Sensitivity analyses of results from meta-analysis of the association between chronic cerebrospinal venous insufficiency and multiple sclerosis (MS) (part 1 of 2)

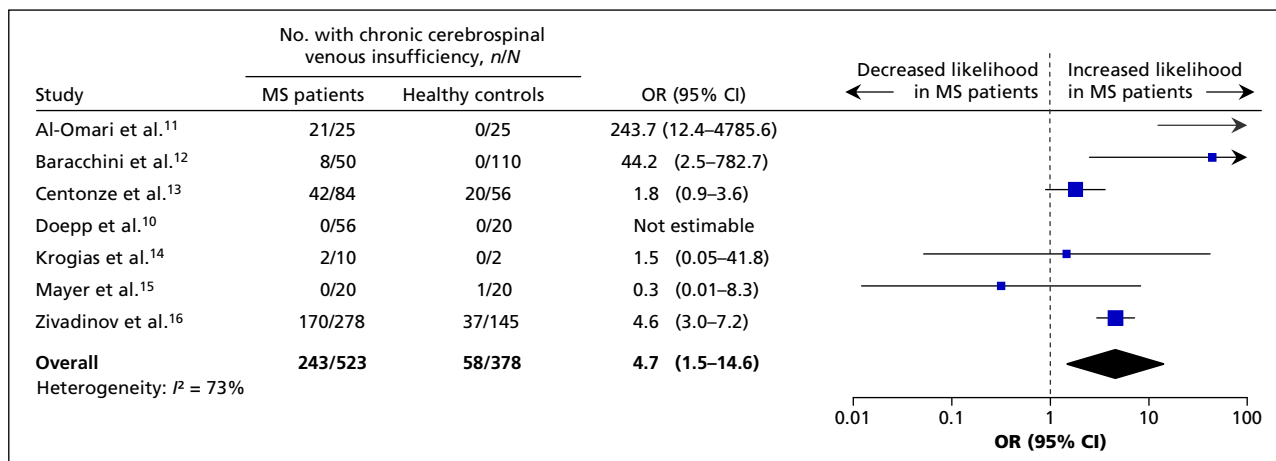


Figure A: Sensitivity analysis of diagnosis of chronic cerebrospinal venous insufficiency in patients with MS versus healthy controls, with study by Zamboni et al.⁴ removed.

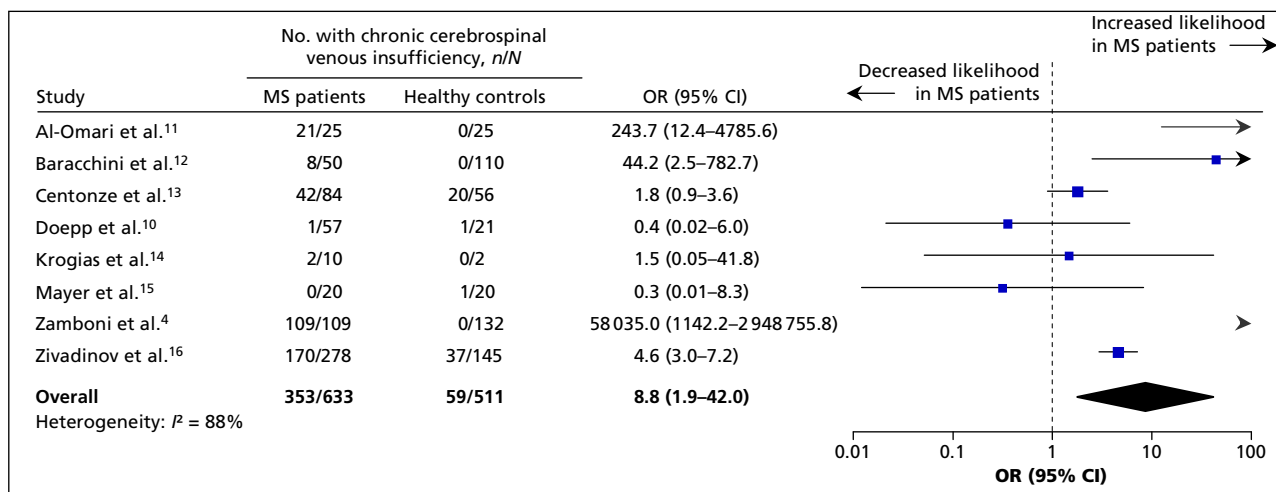


Figure B: Sensitivity analysis of diagnosis of chronic cerebrospinal venous insufficiency in patients with MS versus healthy controls, with study by Doepf et al.¹⁰ included (1 added to each cell).

Note: Citations are available in the main article. CI = confidence interval, OR = odds ratio.

Appendix 3: continued (part 2 of 2)

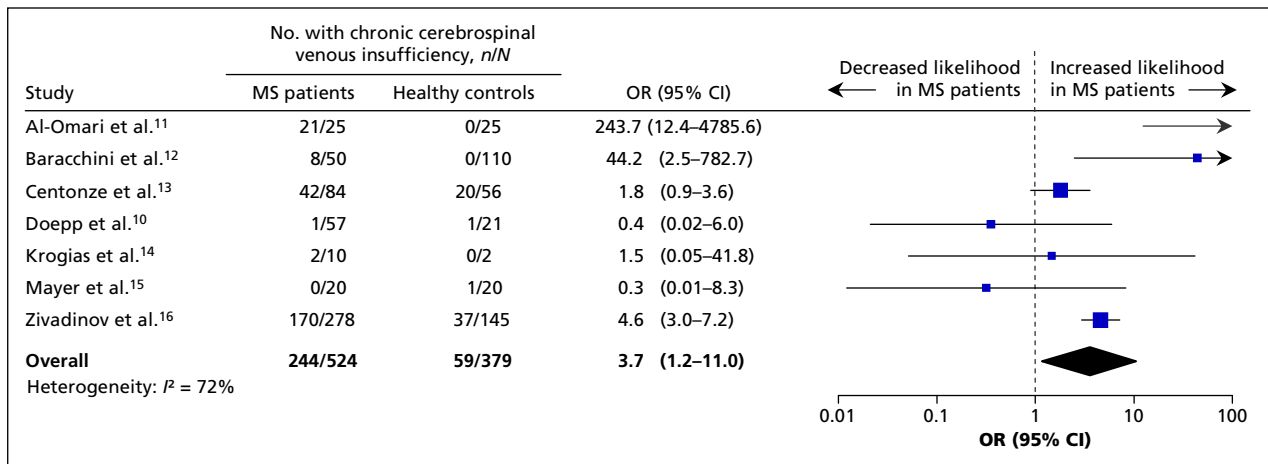


Figure C: Sensitivity analysis of diagnosis of chronic cerebrospinal venous insufficiency in patients with MS versus healthy controls, with study by Zamboni et al.⁴ removed and study by Doepp et al.¹⁰ included (1 added to each cell).

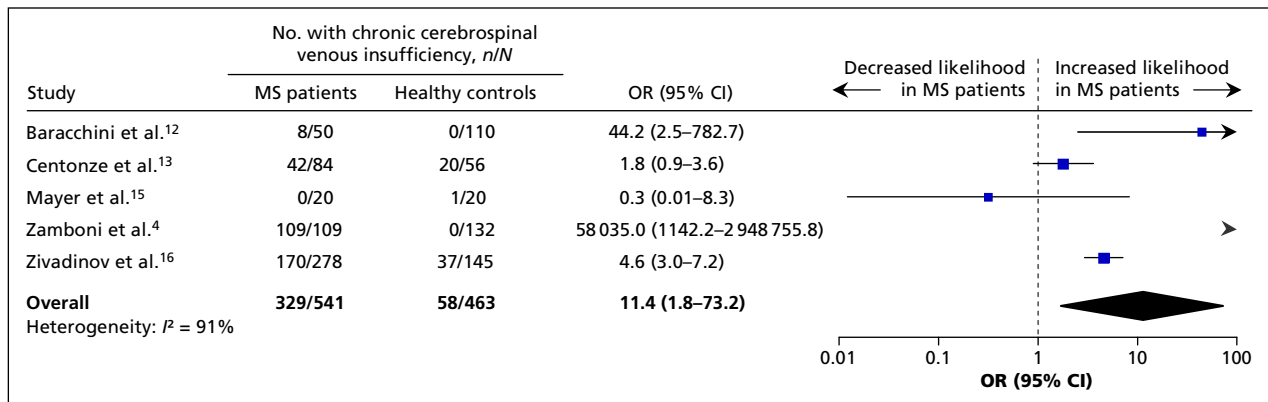


Figure D: Sensitivity analysis of diagnosis of chronic cerebrospinal venous insufficiency in patients with MS versus healthy controls, with nonblinded studies (by Al-Omari et al.,¹¹ Doepp et al.¹⁰ and Krogias et al.¹⁴) removed.

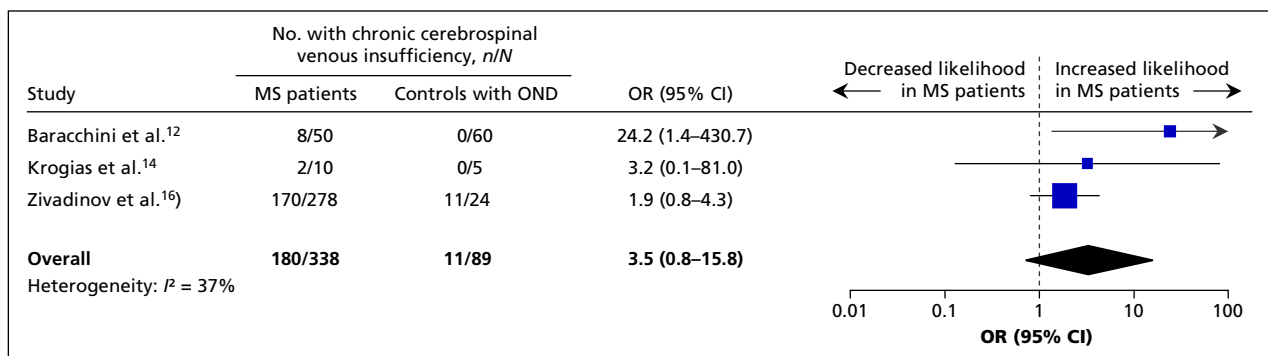


Figure E: Sensitivity analysis of diagnosis of chronic cerebrospinal venous insufficiency in patients with MS versus controls with OND (other neurologic disease), with study by Zamboni et al.⁴ removed.

Note: Citations are available in the main article. CI = confidence interval, OR = odds ratio.