

Supplementary Material

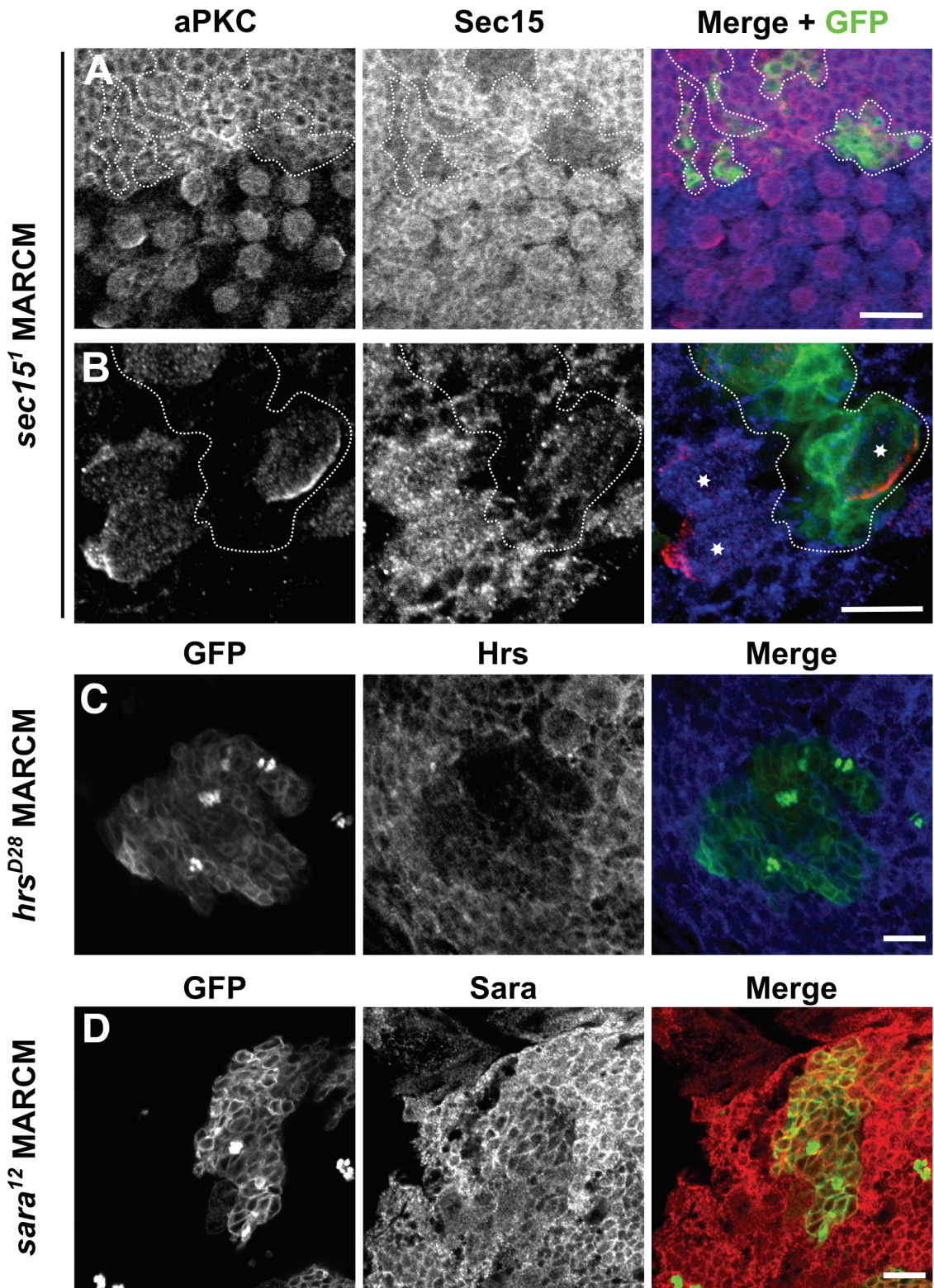


Figure S1, related to Figure 3. Protein levels of Sec15, Hrs and Sara are strongly reduced in MARCM clones in the third instar larval brain. (A) In *sec15<sup>l</sup>* MARCM clones in the optic lobe of the larval brain Sec15 expression is strongly reduced. (B) In *sec15<sup>l</sup>* MARCM clones containing NBs of the central brain Sec15 levels are strongly decreased. NBs in (B) are marked with asterisks. Dotted lines encircle the borders of the MARCM clones. Reduced protein expression is also evident in MARCM clones for *Hrs<sup>D28</sup>* (C) and *Sara<sup>l2</sup>* (D). Clones are marked by GFP expression. Scale bars in A, C, D = 20  $\mu\text{m}$ , scale bar in B = 10  $\mu\text{m}$ .