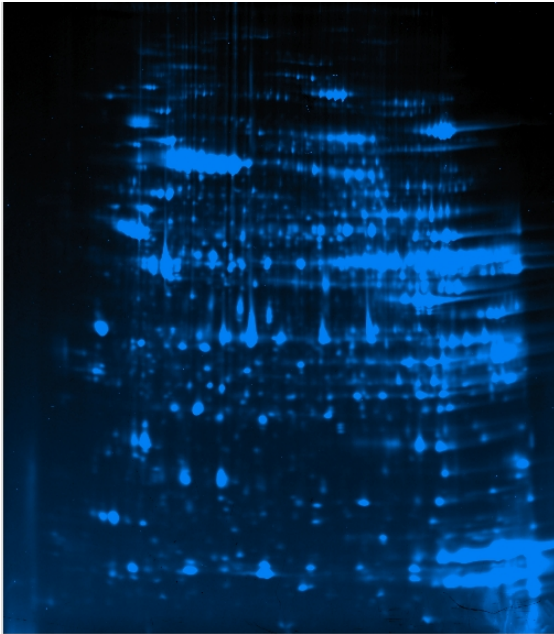
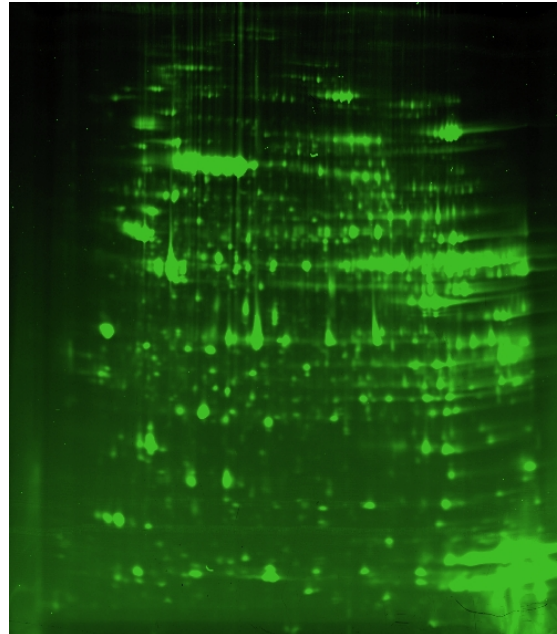


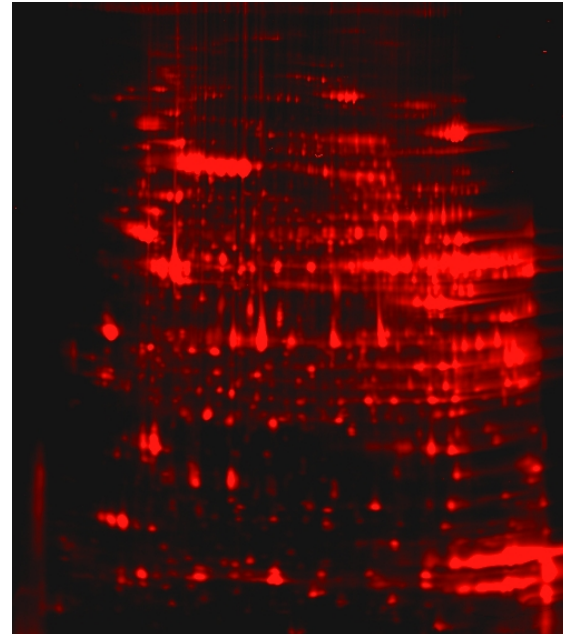
Cy2



Cy3



Cy5



Supporting Fig. 1. Three CyDye images from the “master” 2D DiGE gel. The pooled heart protein reference sample was labeled with Cy2 (left). Cy3 (middle) labeled an E-Ar sample while Cy5 (right) labeled a sample from FA. All 2D DiGE gels were scanned below the saturation limit of the most intense protein spot. The most abundant spots are saturated in these images, however, because we increased the intensity to allow visualization of the less abundant proteins.