

Supplementary Materials

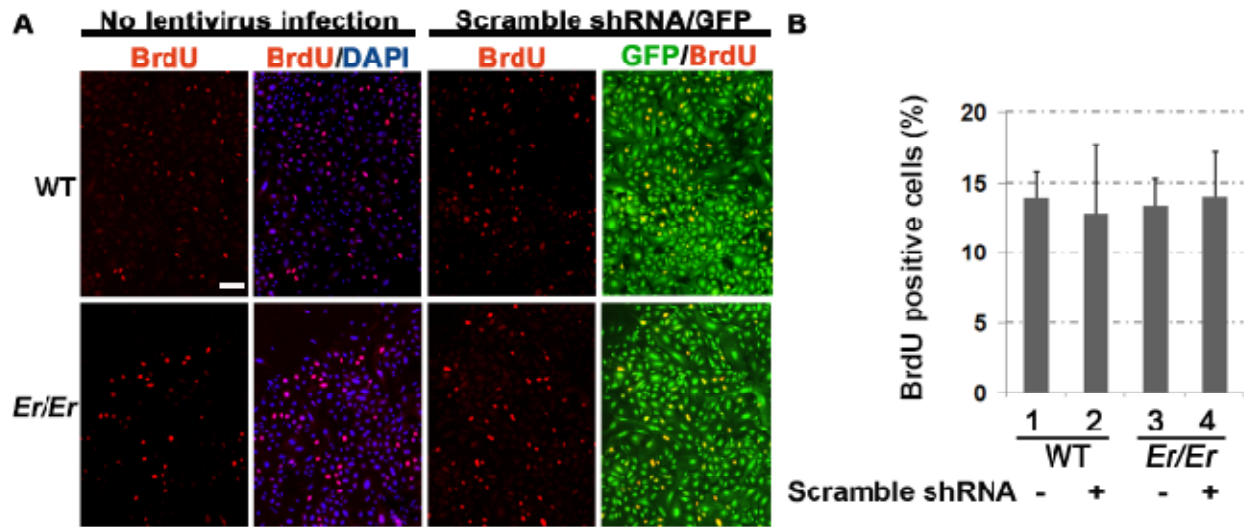


Fig. S1. The control scramble shRNA does not affect the WT and *Er/Er* keratinocyte proliferation. **(A)** Primary WT and *Er/Er* keratinocytes were transduced with or without scramble shRNA lentiviruses for 3 days, and then the proliferating cells were labeled by BrdU incorporation and immunostained with anti-BrdU antibody (red). GFP (green) labeled the scramble shRNA lentivirus transduced cells. DAPI (blue) was used for nuclear counterstaining. The scale bar represents 50 μ m. **(B)** The percentage of BrdU-positive cells in total either non-transduced cells or transduced GFP positive cells are summarized.

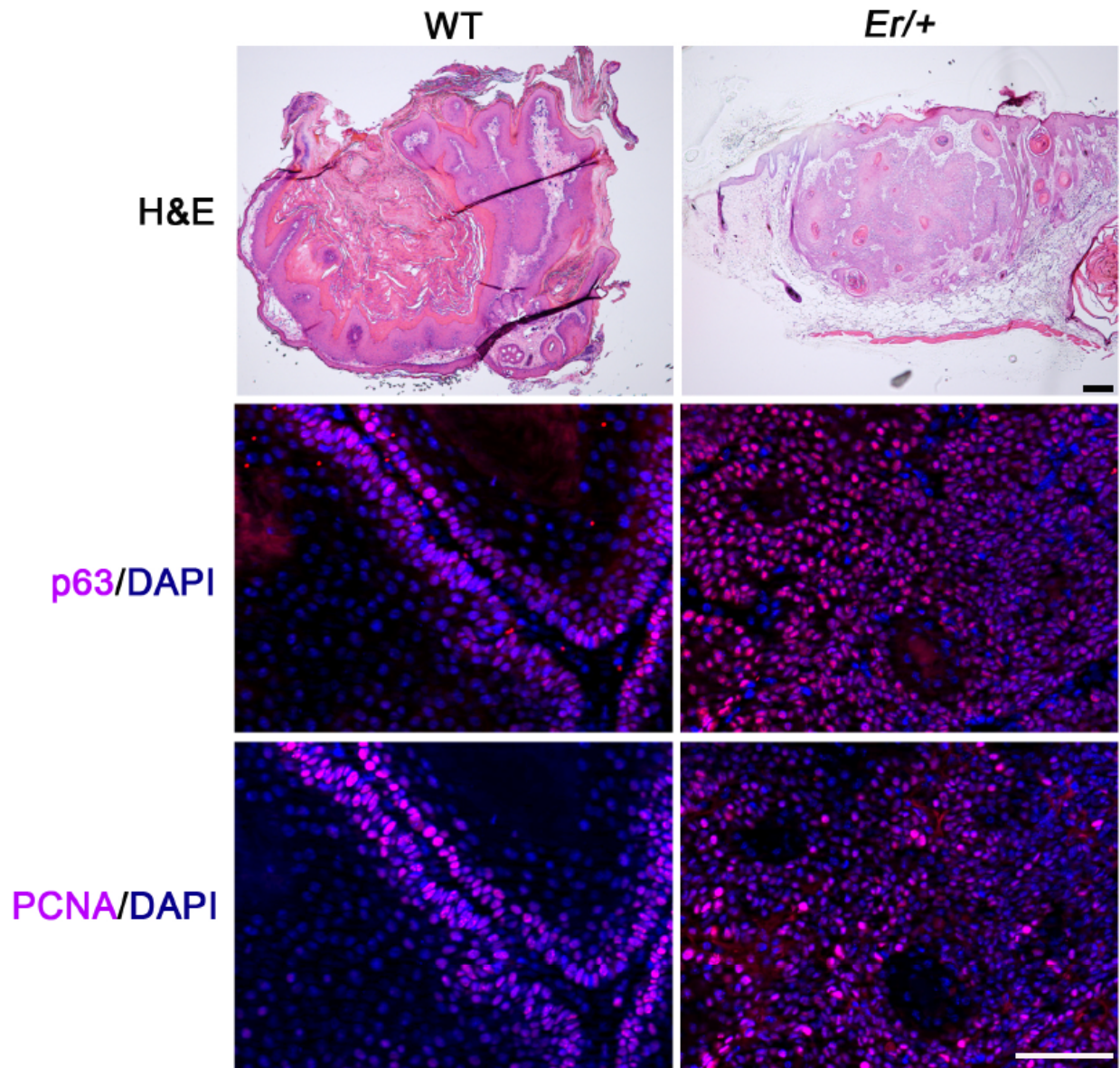


Fig. S2. Representative photographs of H&E, immunofluorescence of p63 and PCNA on DMBA/TPA induced WT papillomas and *Er/+* carcinomas (counterstained by DAPI in blue). Scale bars represent 100 μm .