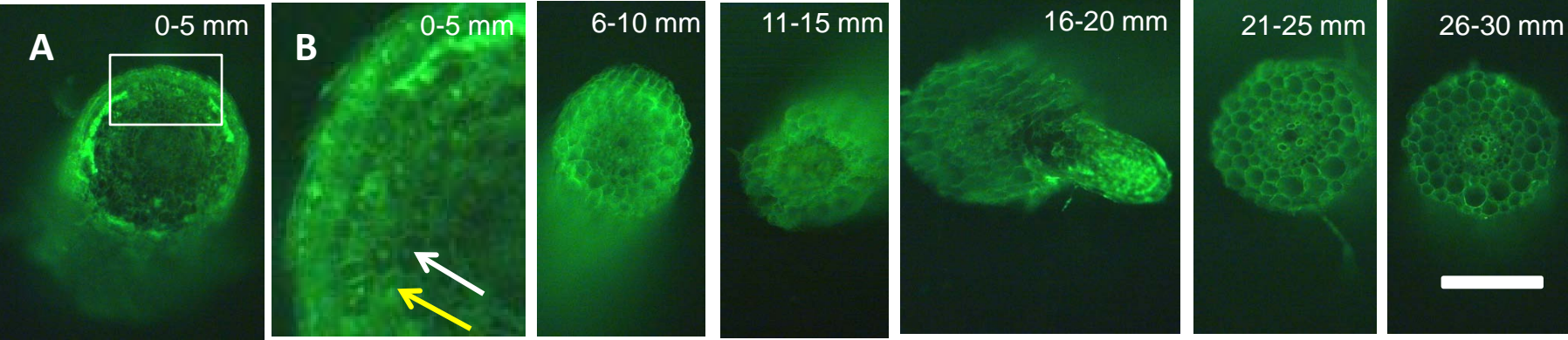


Aluminium localisation in root tips of the aluminium-accumulating plant species buckwheat (*Fagopyrum esculentum* Moench)

Benjamin Klug, André Specht, and Walter J Horst

Supplementary figure 1. Aluminium distribution in cross sections of primary root tips after 24 h Al treatment in minimal nutrient solution containing 500 μM CaCl_2 , 8 μM H_3BO_3 and 75 μM AlCl_3 at pH 4.3 in a distance of 0-30 mm from the root tip. Root tips were agarose-embedded and free-hand sectioned. (A) shows the overview of the Al distribution in the first 5 mm section (B) shows a close up of the marked section in A. Yellow arrow indicate a cell with intact cytoplasm showing high symplastic fluorescence intensity, white arrow indicate a damaged and thus empty cell. Scale bar represents 200 μm at 100-fold magnification (B excluded).



Supplemental figure 1