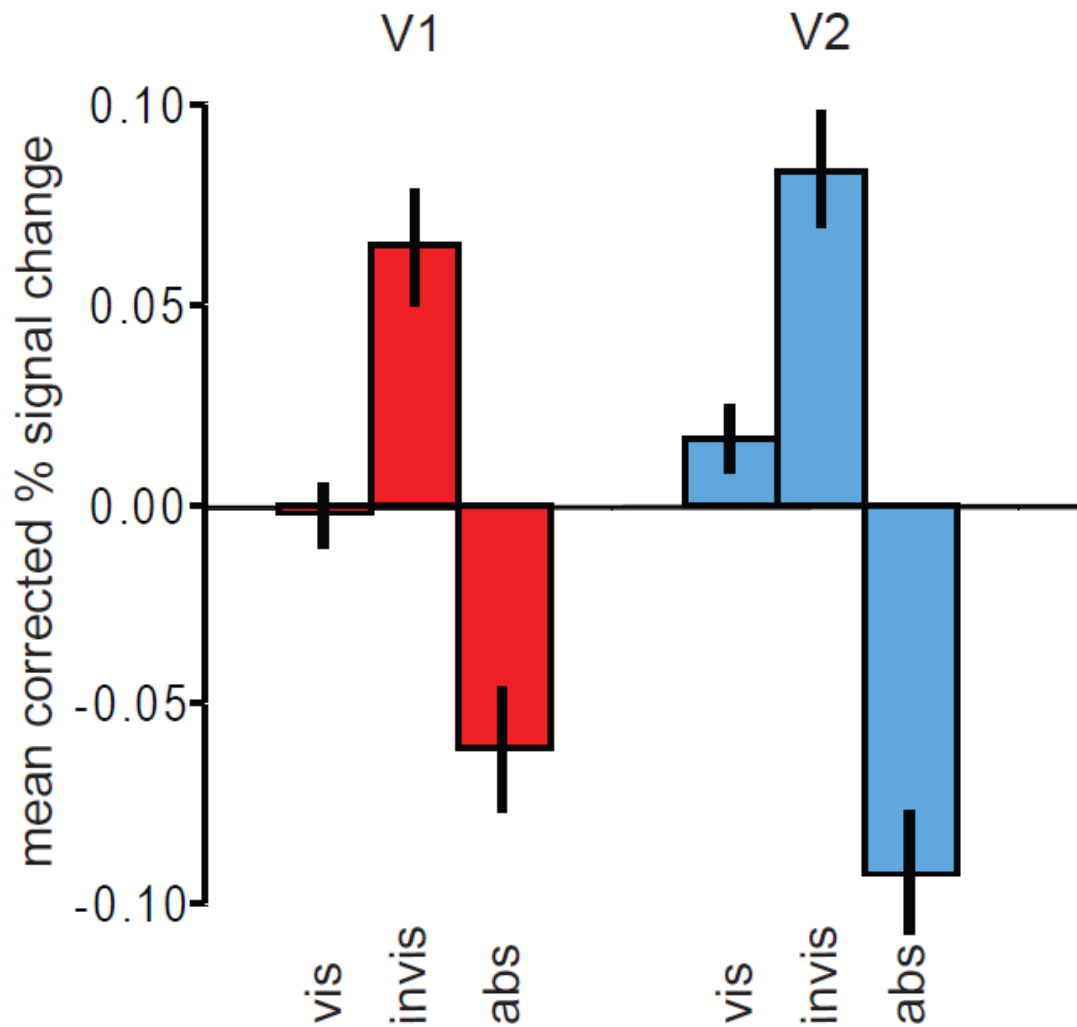


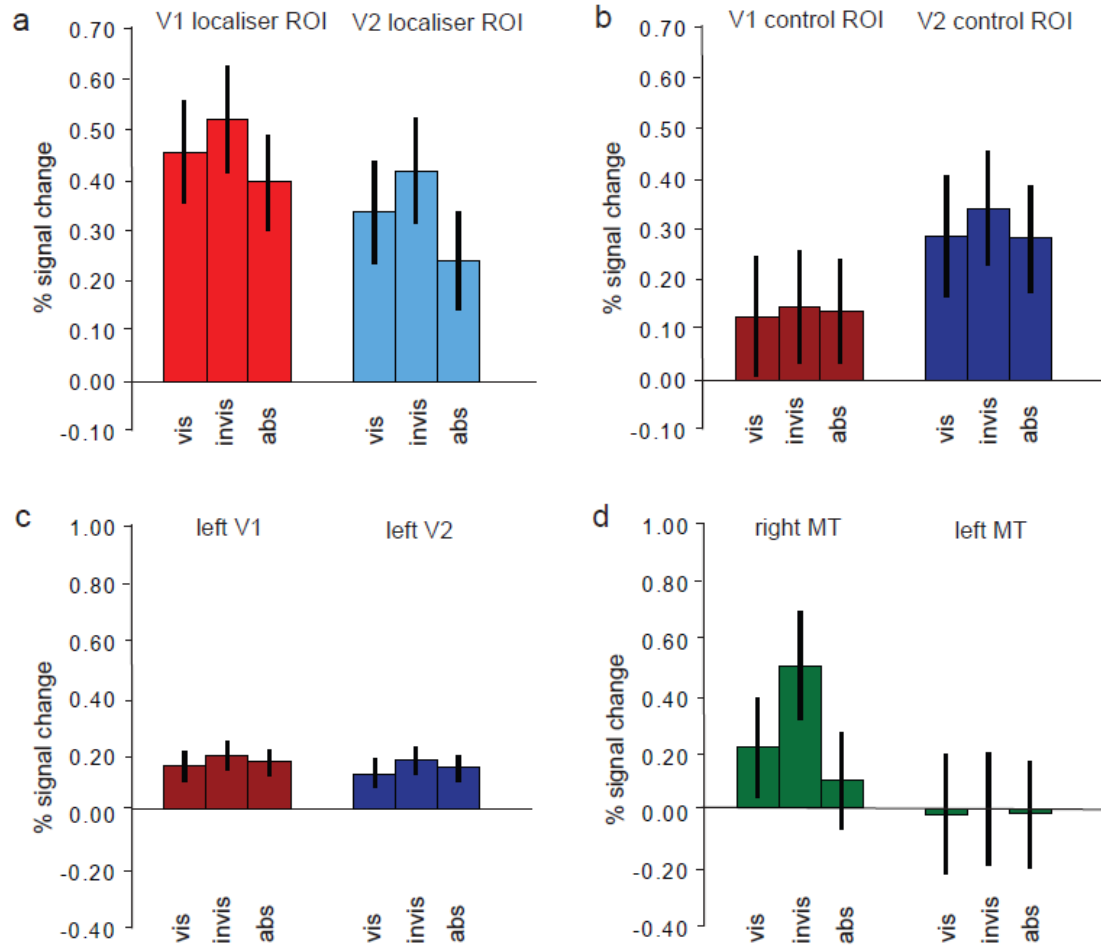
Supplementary Material

<i>participant</i>	<i>duration (sec)</i>		<i>percentage of total time</i>	
	visible \pm s.e.m.	invisible \pm s.e.m.	visible	invisible
AD	4.26 \pm 0.20	2.57 \pm 0.08	65	35
AM	6.23 \pm 0.48	3.78 \pm 0.19	66	34
AS	5.63 \pm 0.40	4.85 \pm 0.24	58	42
EA	5.81 \pm 0.34	8.71 \pm 0.32	46	54
JK	5.73 \pm 0.19	5.52 \pm 0.20	56	44
JM	4.00 \pm 0.22	10.77 \pm 0.54	31	69
MS	9.06 \pm 0.55	3.67 \pm 0.17	76	24
NF	5.20 \pm 0.47	6.62 \pm 0.39	48	52

Supplementary Table 1. Individual participant's behavioural data. Average duration (left) and percentage of total time of the experiment (right) that the target was visible and invisible are shown for each participant. s.e.m., standard error of the mean.



Supplementary Figure 1. BOLD signal in localiser ROIs when the viewing epochs were corrected for participant's individual reaction times. Mean-corrected % BOLD signal change is shown for the three conditions (visible, invisible, absent) for the localiser ROIs in V1 (red bars) and V2 (blue bars). The activity pattern is very similar to the pattern observed when the viewing epochs are not corrected for reaction time (see Figure 2b in the main text).



Supplementary Figure 2. Raw BOLD signal for the regions considered. The raw BOLD signal is shown for the V1 and V2 localiser ROIs (**a**), for the V1 and V2 control ROIs (**b**), for the whole of the ipsilateral (left) V1 and V2 (**c**), and for left and right V5/MT (**d**). Colour conventions are the same as in the main text.