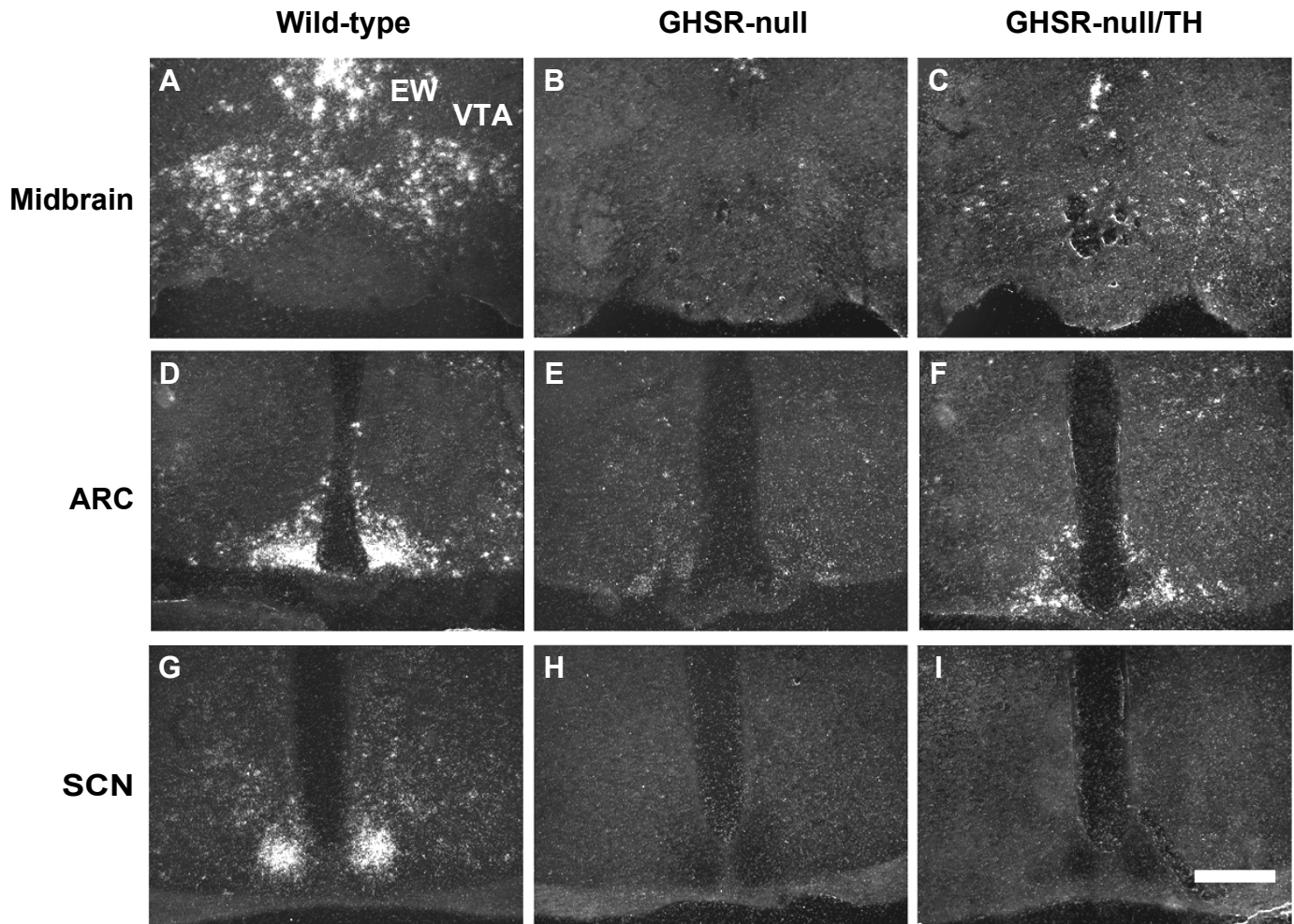


Supplemental Figure 1.



**Supplemental Figure 1. Selective re-expression of GHSR mRNA in catecholaminergic neurons.** GHSR in situ hybridization histochemistry in representative wild-type, GHSR-null, and GHSR-null/TH mice, demonstrating usual levels of GHSR mRNA expression in the midbrain (including the VTA and Edinger-Westphal nucleus), ARC and SCN of wild-type mice (A, D, G), lack of obvious GHSR mRNA expression in the same regions of GHSR-null mice (B, E, H), and selective re-expression of GHSR mRNA within catecholaminergic neurons of GHSR-null/TH mice derived by genetic crosses of GHSR-null mice with TH-cre mice, including a subset of midbrain and ARC neurons (C, F) but not SCN neurons (I). EW:Edinger-Westphal nucleus, VTA: ventral tegmental area, ARC: arcuate nucleus, SCN: Suprachiasmatic nucleus. Scale bar= 500 $\mu$ m.