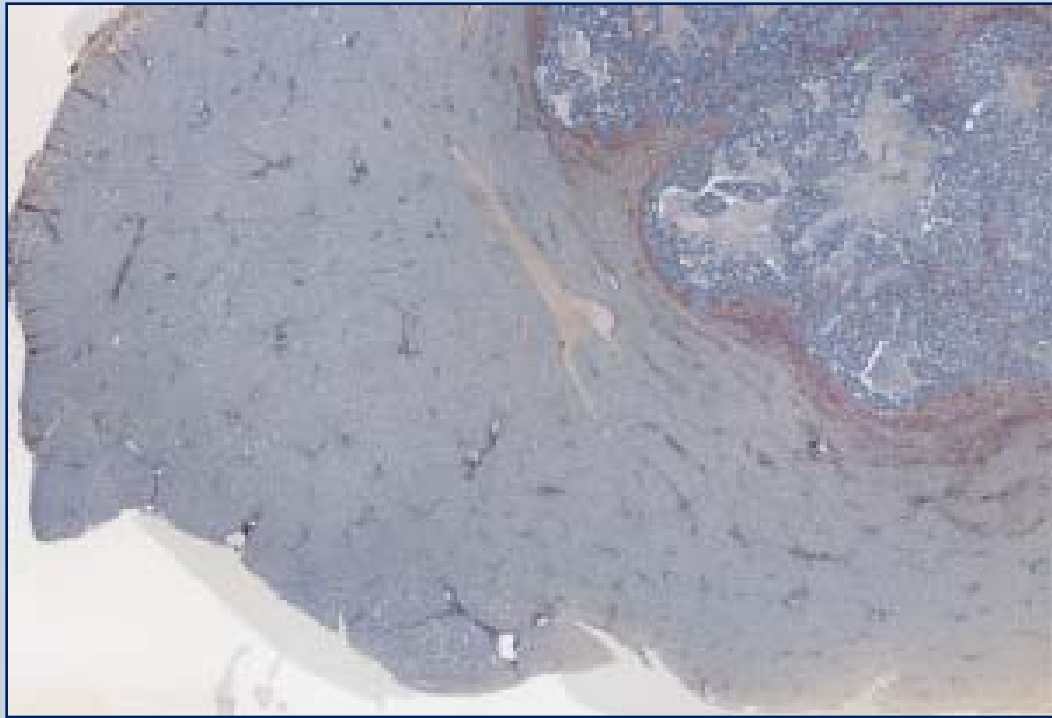




Virtual Slide  $S_1$

- 21943 x 21726 pixels
- Subdivided into 10594 subimages
- Digitalized at 200X
- 0.4667  $\mu\text{m}/\text{pixel}$
- Contributed 214 positive and 204 negative subimages



Virtual Slide  $S_2$

- 33912 x 24876 pixels
- Subdivided into 18746 subimages
- Digitalized at 200X
- 0.4667  $\mu\text{m}/\text{pixel}$
- Contributed 80 positive and 77 negative subimages

\*To keep size of display images consistent, virtual slides are downgraded at different scales .