

## Inhibition of Human Liver Aldehyde Oxidase:

### *Implications for Potential Drug-drug Interactions*

John T. Barr and Jeffrey P. Jones†

Department of Chemistry, Washington State University, Pullman, WA, 99164

†To whom correspondence should be addressed. Tel: 509-335-5983, Fax: 509-335-8867, Email:

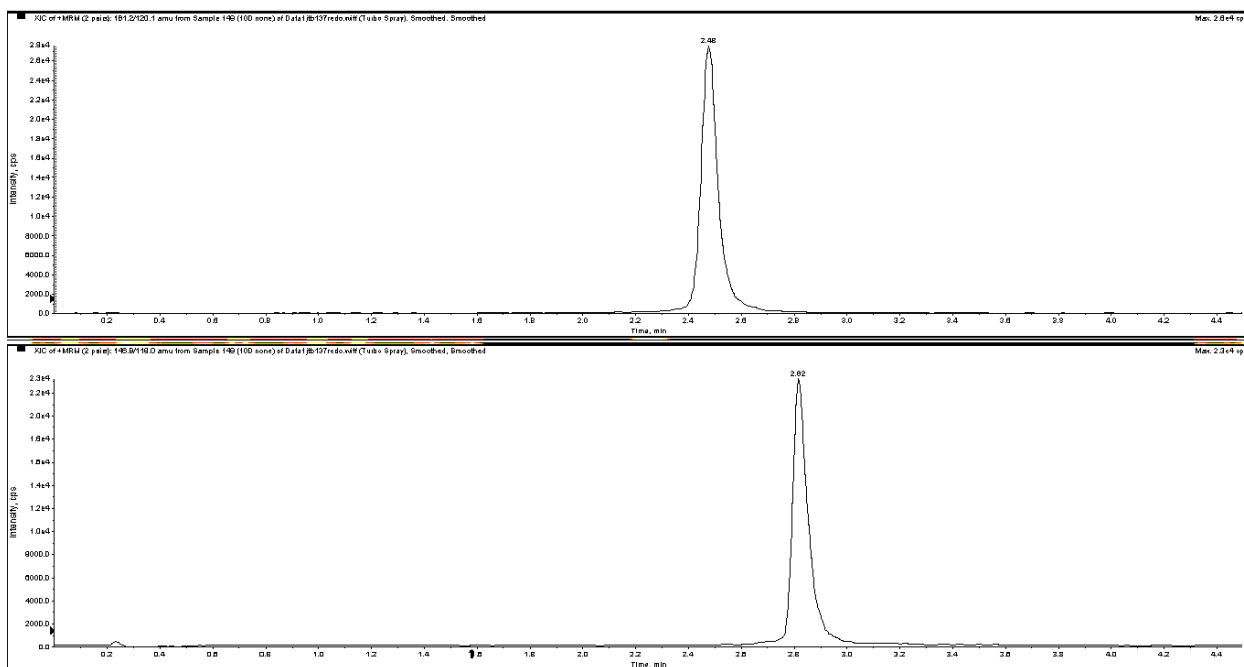
[jpi@wsu.edu](mailto:jpi@wsu.edu) .

## Supplemental Data

### Supplemental Figure 1.

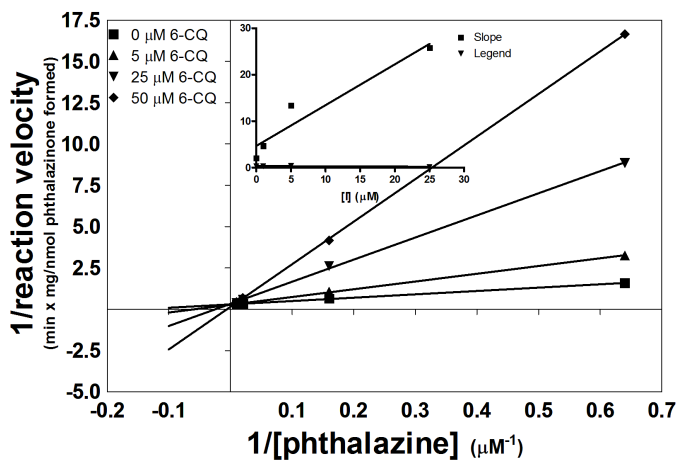
#### LCMS PEAKS

Example peaks of IS (top) and metabolite (bottom) from LCMS assay.

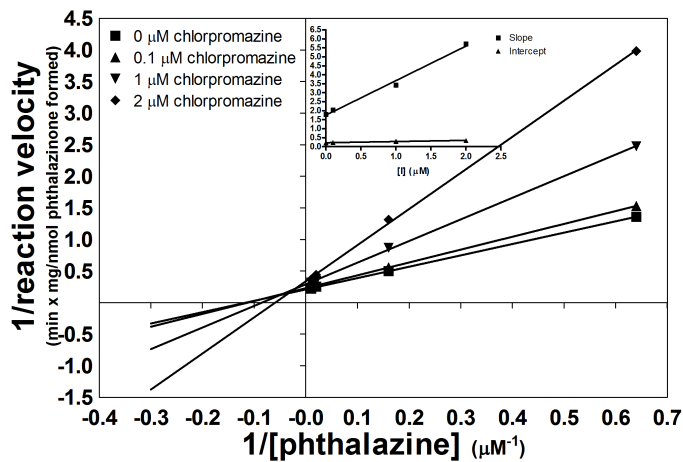


**Supplemental Figure 2. Lineweaver Burk Plots for Inhibition of Phthalazine Oxidation by Human Liver Aldehyde Oxidase**

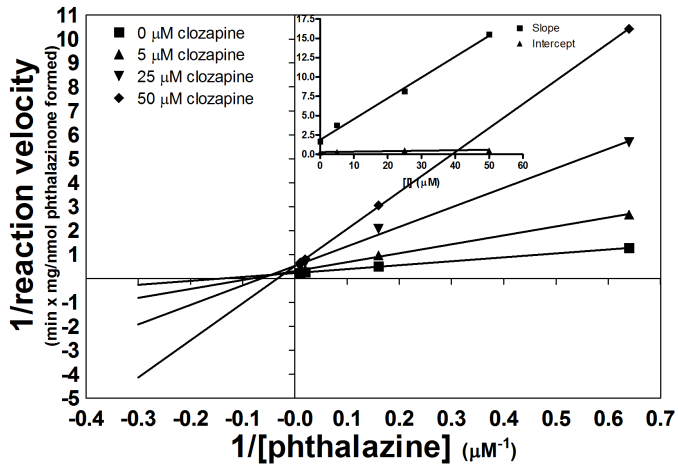
*Chloroquinazolinone Assay :*



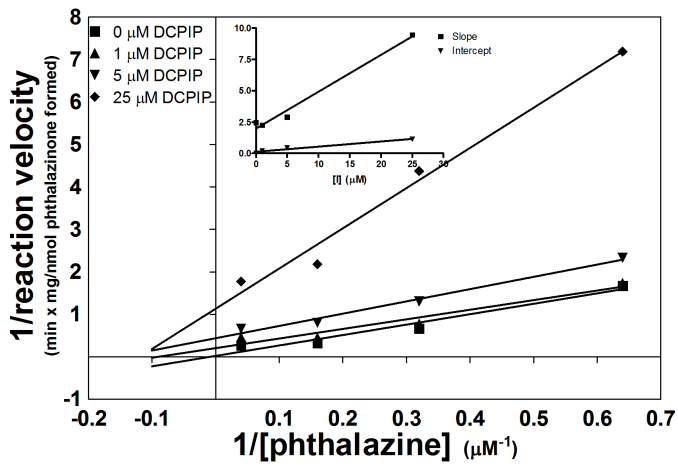
*Chlorpromazine Assay 2:*



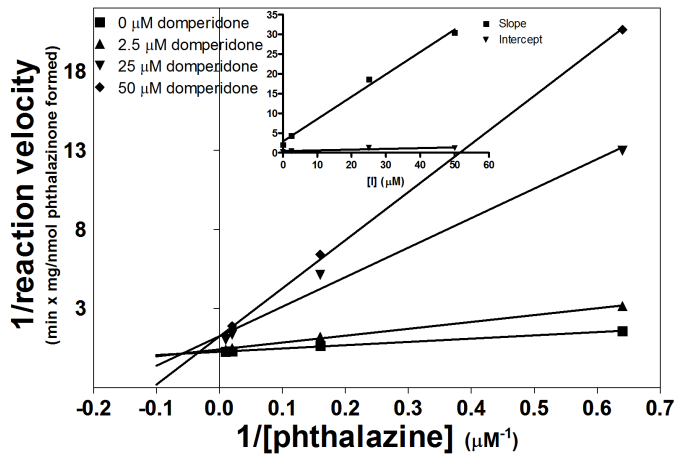
*Clozapine Assay 2:*



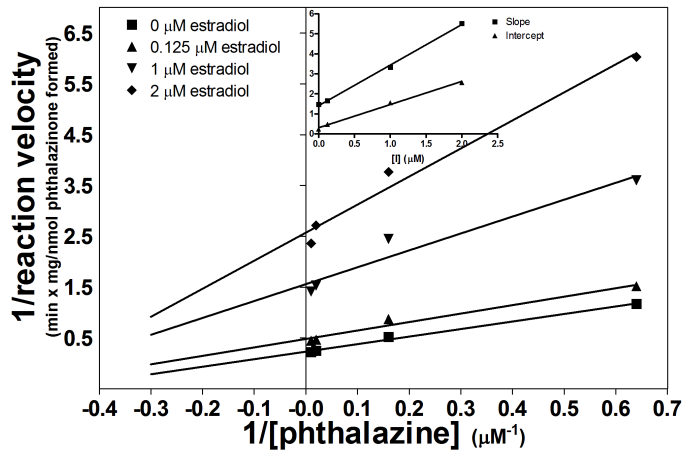
*DCPIP Assay 2*



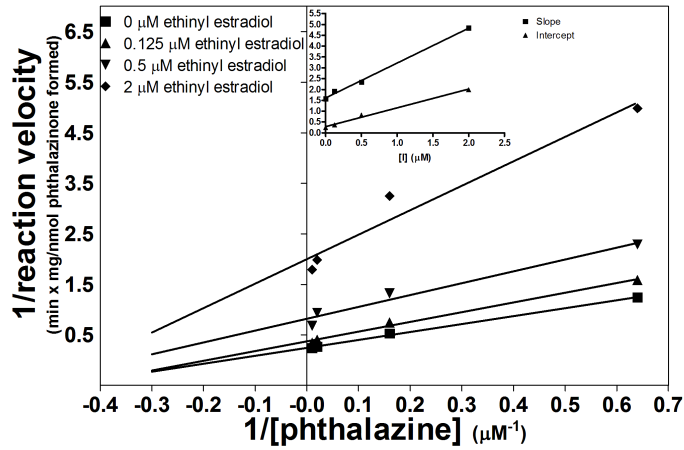
*Domperidone Assay 2:*



*Estradiol Assay 2:*



*Ethinyl Estradiol Assay 2:*



*Menadione Assay 2:*

