

Figure 1A

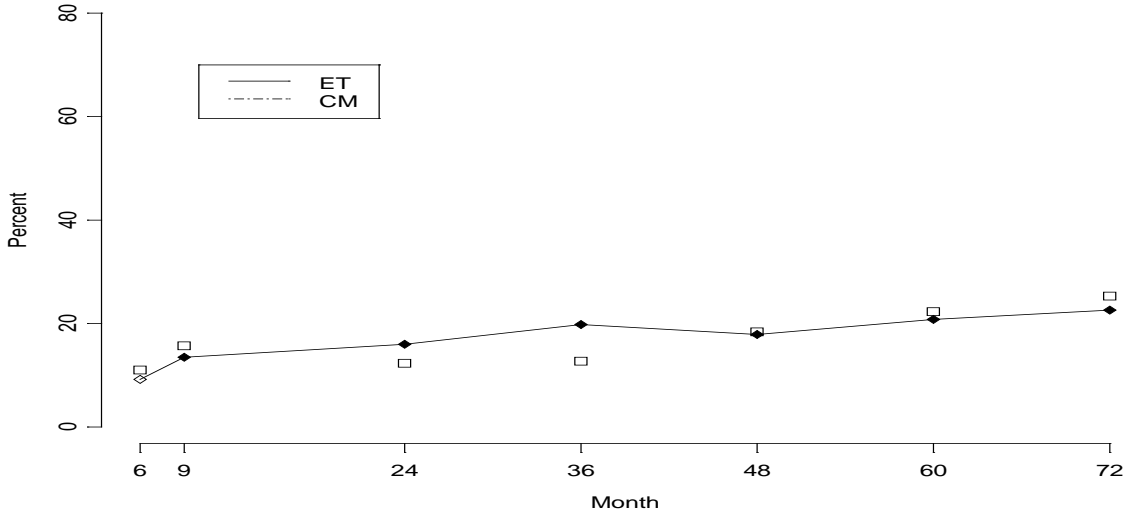


Figure 1B

Figure 1. Prevalence of astigmatism (≥ 1.00 diopter (D) Figure 1A) and high astigmatism (≥ 2.00 D Figure 1B) at 6 and 9 months corrected and at 2, 3, 4, 5, and 6 years postnatal age. (Data from prior to 4 years of age from reference 6). Early-Treated (ET); Conventionally-Managed (CM)