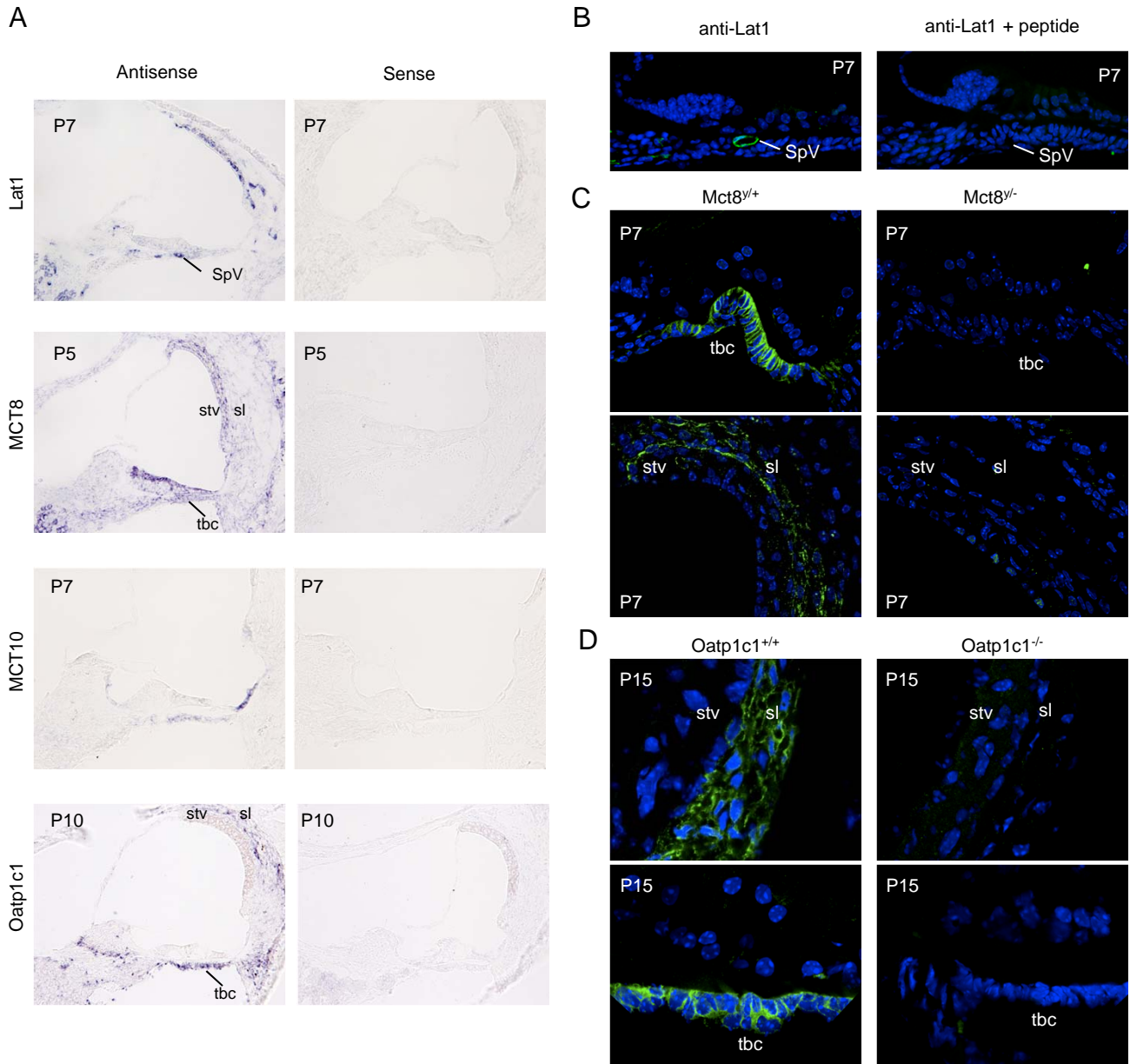


Supplemental Figure 1.



**Supplemental Figure 1.** Control data demonstrating the specificity of *in situ* hybridization signals (A) and immunofluorescence staining (B) detected in mouse cochlear sections.

(A) Hybridization of cochlear sections with sense cRNA probes (right panels), showed little to no staining whereas antisense cRNAs (left panels) produced specific signals. Ages shown are chosen based on the developmental stage of peak expression detected with the antisense probe.

(B) Lat1 immunofluorescence signal in the spiral vessel (SpV) is undetectable following preincubation of anti-Lat1 antibody with 50-fold excess (by mass) of immunization peptide. Wild type cochlear sections.

(C) No specific anti-Mct8 immunofluorescence is detected in the tympanic border cells (tbc) or spiral ligament (sl) of mice lacking Mct8.

(D) No specific anti-Oatp1c1 immunofluorescence is detected at P15 in the tympanic border cells (tbc) or spiral ligament (sl) of mice lacking Oatp1c1.