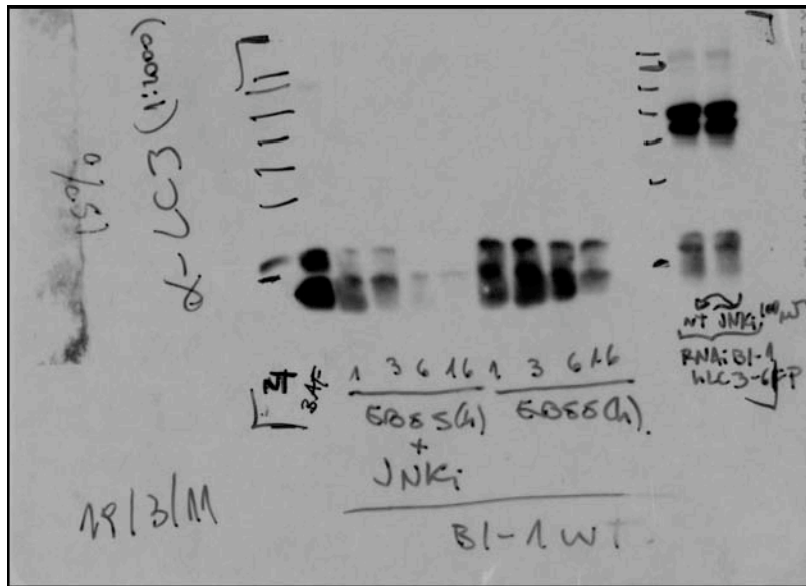
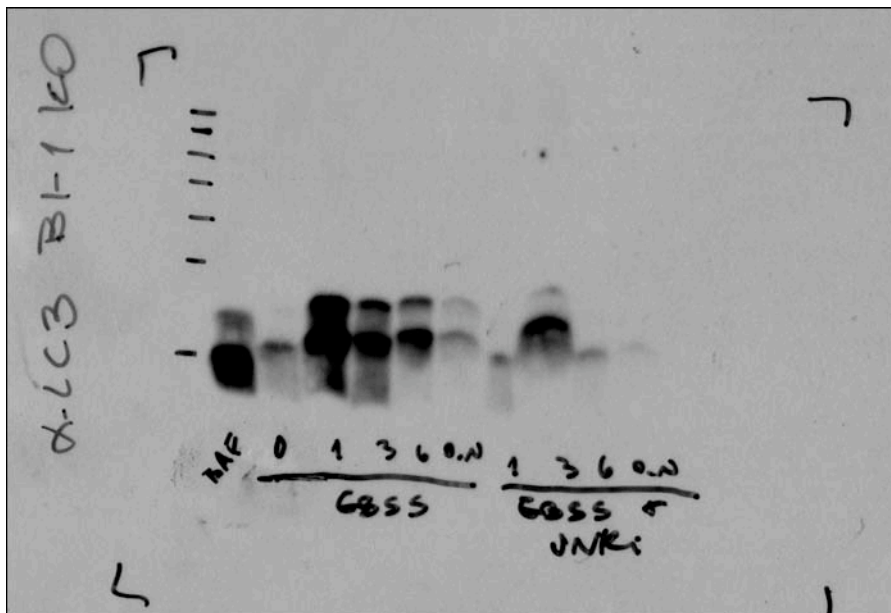


**Original scans requested by editor**



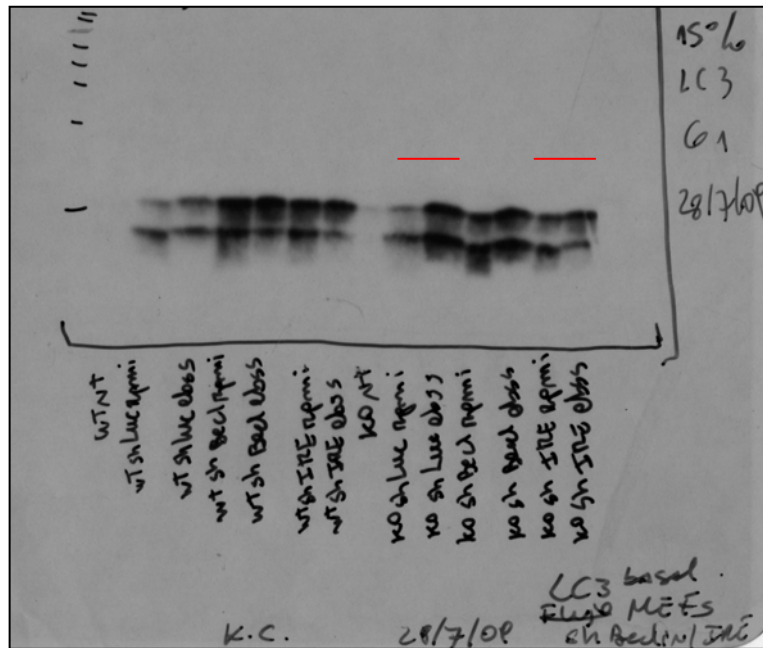
**Original Scan Figure 4C third panel (left):**

First well (contains also ladder) in the non treated WT line [NT]. For symmetry reasons, we deleted the second line corresponding to a positive control (lysosomal inhibitors [BAF]).



**Original Scan Figure 4C third panel (right):**

First line, ladder, second line corresponds to a positive control (treatment with lys inhibitors [Baf]). Then, for the Figure we move the lanes with JNK inhibitor to the left and to maintain the symmetry with the panel corresponding to WT cells (upper film).



**Original Scan Figure 5B:**

For the Figure, we used only two conditions of a full experiments where we compare the impact of shLuc and shIRE1 in BI-1 KO cells on LC3-II levels after RPMI or EBSS treatment. Western blot lines used to generate the panel of figure 5B are indicated with a red line.