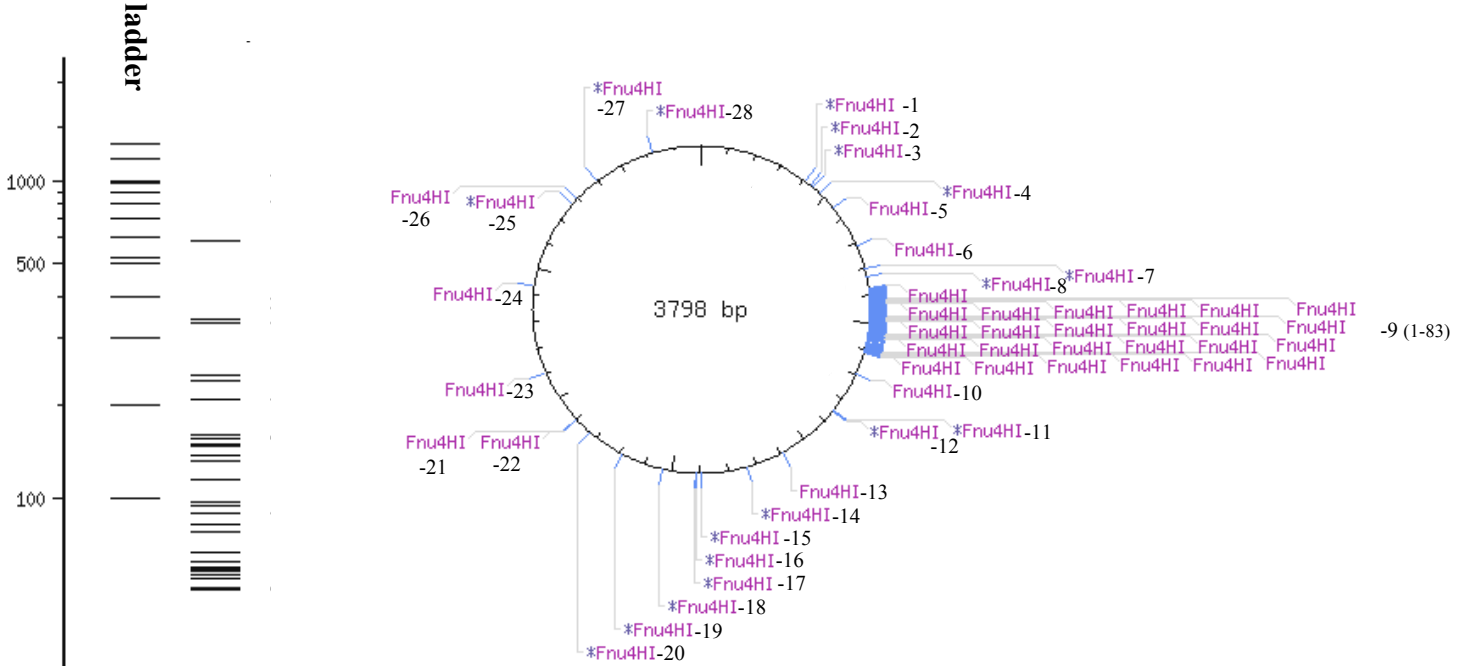
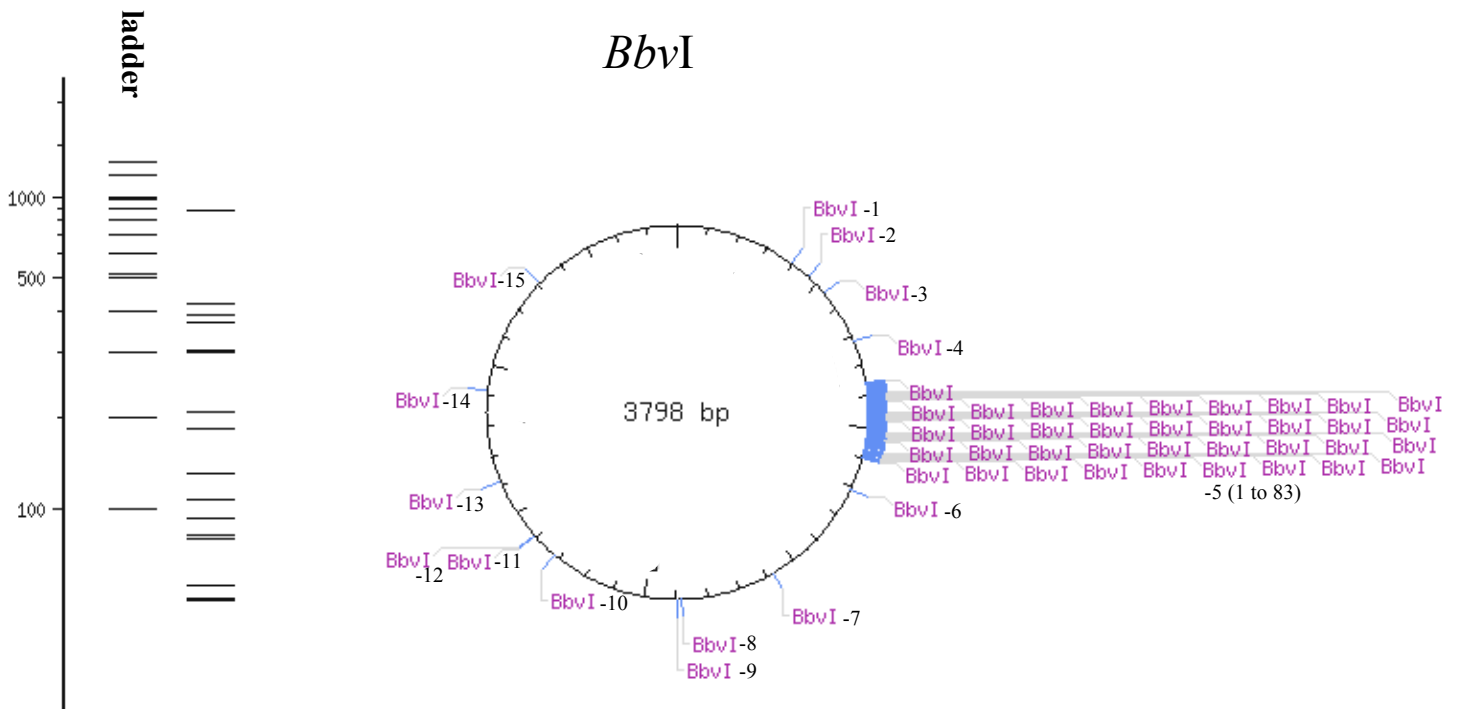


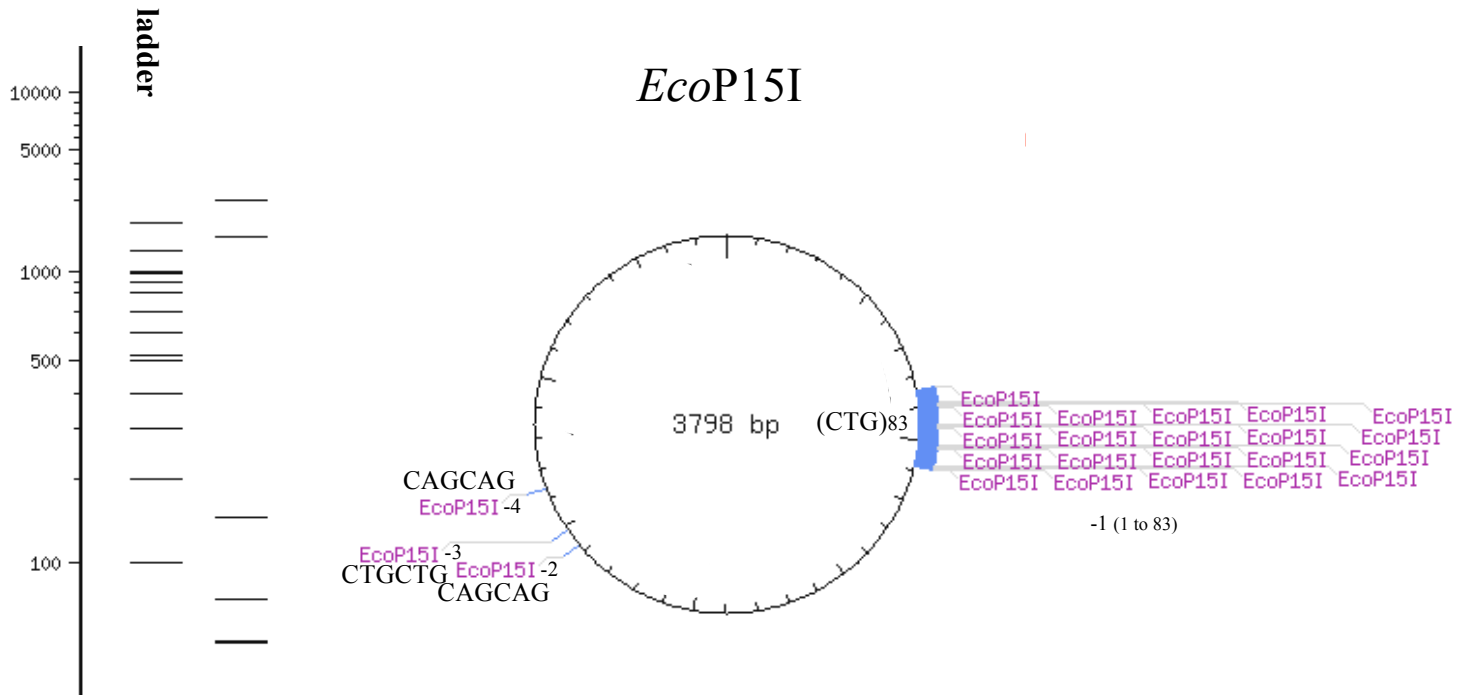
Fnu4HI



#	Cut position (5' ext. - 3' ext.)	<i>Fnu</i> 4HI site with flanks	
		5' -GC N GC-3'	3' -CG N CG-5'
1	*407/408	5'-TAG CGG TCAC	GC T GC GCGTAACCAC-3'
2	*429/430	5'-CACCACACCC	GC C GC GCTTAATGCG-3'
3	*443/444	5'-CG CTT AATGC	GC C GC TACAGGGCGC-3'
4	*476/477	5'-CG CC ATTTCAG	GC T GC GCAACTGTTG-3'
5	549/550	5'-AGGGGGATGT	GC T GC AAGGCGATTA -3'
6	710/711	5'-TCGAATTCCT	GC A GC CCGGGGGATC -3'
7	*802/803	5'-CCG CCC CTA	GC G GC CGGGGAGGGA -3'
8	*829/830	5'-G CCG GTCC	GC G GC CGGCGAACGG -3'
9 (1 to 83)	872/873 to 1115/1116	repeat	5'-AG CCG GGAAT GC T GC T GC T GC T GC T G.....C T GC TGGGGGGATC-3'
10	1199/1200	5'-G CC TGGGAAG	GC A GC AAG CCG GGCC-3'
11	*1353/1354	5'-TTGGG CT AGA	GC G GC CG CC ACCGCG-3'
12	*1356/1357	5'-GG CT AGAG CG	GC C GC CACCG CG GTG -3'
13	1593/1594	5'-TGTCGTG CCA	GC T GC ATTAATGAAT -3'
14	*1731/1732	5'-AGAGG CCG GAG	GC G GC CTCGG CC TCT -3'
15	*1896/1897	5'-TCACTGACTC	GC T GC G CT CGGTCGT -3'
16	*1914/1915	5'-CGGTCGTT CG	GC T GC GG CG AG CG GT -3'
17	*1917/1918	5'-TCGTT CGG CT	GC G GC GAG CG GTATC -3'
18	*2035/2036	5'-CCGTAAAAAG	GC C GC GTTG CT GGCG -3'
19	*2190/2191	5'-TTCCGAC CC T	GC C GC TTACCGGATA -3'
20	*2333/2334	5'-CAG CCC GACC	GC T GC G CC TTATCCG -3'
21	2398/2399	5'-ATCG CC ACTG	GC A GC AG CC ACTGGT -3'
22	2401/2402	5'-CCACTGG CA	GC A GC CACTGGTAAC -3'
23	2607/2608	5'-TTGTTT GCAA	GC A GC AGATTAC CG -3'
24	2935/2936	5'-GG CCC AGT	GC T GC AATGATACCG-3'
25	*3274/3275	5'-AGTAAGTTG	GC C GC AGTGTTATCA-3'
26	3301/3302	5'-ATGGTTATG	GC A GC ACTG C ATAAT -3'
27	*3396/3397	5'-AATAGTGTAT	GC G GC GACCGAGTTG -3'
28	*3625/3626	5'-AAGG CA AAAT	GC C GC AAAAAAGGGA -3'

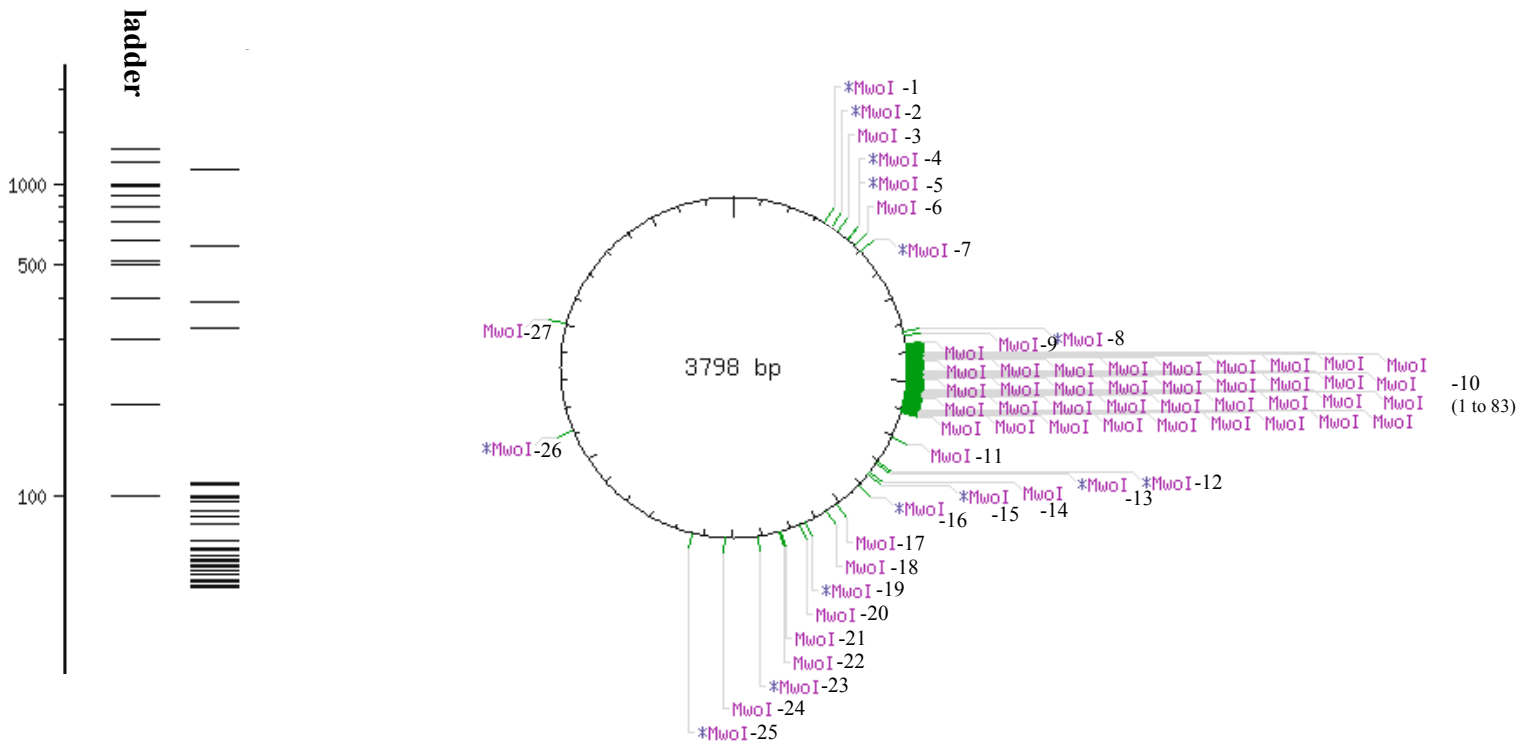


#	Cut position (5' ext. - 3' ext.)	BbvI site with flanks 5' -GCAGC NNNNNNNNN NNNN -3' 3' -CGT CG NNNNNNNNN NNNN -5'
1	393/397	5' -G TGTA G CGGTCAC GCTGC GCGTAACCAC -3'
2	462/466	5' -CA TTCG C CATTCAG GCTGC GCAACTGTTG -3'
3	535/539	5' -CG AAAG A GGGGATGT GCTGC AAGGCGATTA -3'
4	721/725	5' -TCGAATTCCT G CAGC CCGGGGGA TCTG A CT -3'
5 (1 to 83)	858/862 to 1101/1105	repeat 5' -AGC CGG G A A T A G C T A G C T A G C T A G C T A G C T A G C ...TGGGGG -3'
6	1210/1214	5' - G CCTGGGAAG G CAGC AAG C CGGG C CGT A CC -3'
7	1579/1583	5' -AA CCTG T CGTG C CA GCTGC ATTAATGAAT -3'
8	1882/1886	5' -TC G CTC A CTGACTC GCTGC GCTCGGTCGT -3'
9	1900/1904	5' -GG G CCG A GTCGTTCG GCTGC GG C GAG C GGT -3'
10	2319/2323	5' -CG TTCA A GCCCGACC GCTGC GCCTTATCCG -3'
11	2409/2413	5' -ATCG C CACTG G CAGC AG C CACTG GTAA A CA -3'
12	2412/2416	5' - G CCACTGG C A G CAGC CACTGGTA ACAG A GA -3'
13	2618/2622	5' -TTGTTT G CAA G CAGC AGATTACG C GCA A GA -3'
14	2921/2925	5' -CA TCTG A GCCCCAGT GCTGC AATGATACCG -3'
15	3312/3316	5' -CATGGTTATG G CAGC ACTG C ATA ATTC A TC -3'



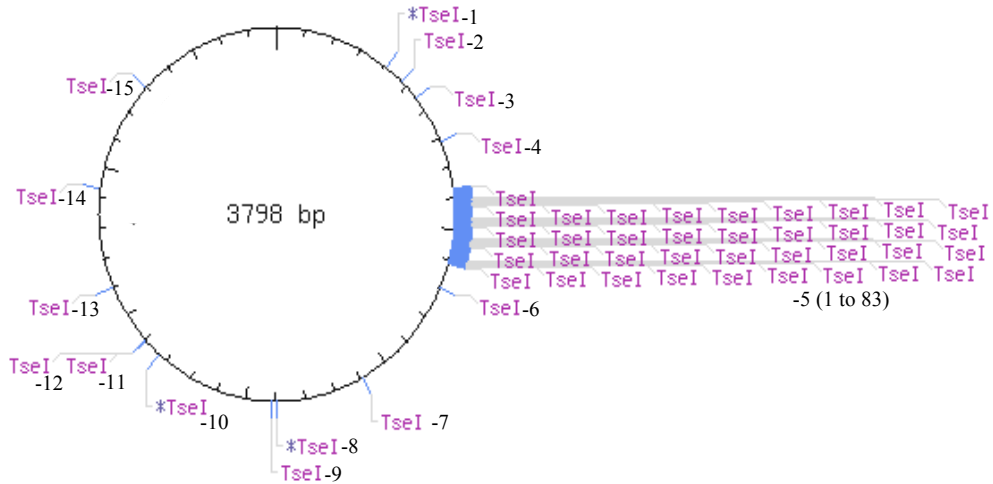
#	Cut position (5' ext. - 3' ext.)	EcoP15I site with flanks	
		5' -CAGCAG (N) 25 NN -3'	3' -GTCGTC (N) 25 NN -5'
1 (1 to 83)	844/846 to 1087/1089	repeat 5' -GG CTAC GA [▲] A GG [▲] G TC [▲] C TT [▲] G TA [▲] G CCG GGA ATG CTG CTG CTG CTG CTGC.....CTGGG-3'	
2	2428/2430	5' -TCGCCACTGG CAGCAG CCACTGGTAAACAGGATTAGCAGAG CG [▲] AG-3'	
3	2486/2488	5' -CT [▼] AG [▲] AAGGACAGTATTTGGTATCTGCGCT CTGCTG AAGCCAGTTA-3'	
4	2637/2639	5' -TGTTTCAAG CAGCAG ATTACGCGCAGAAAAAAGGATCTC AA [▲] GA-3'	

MwoI



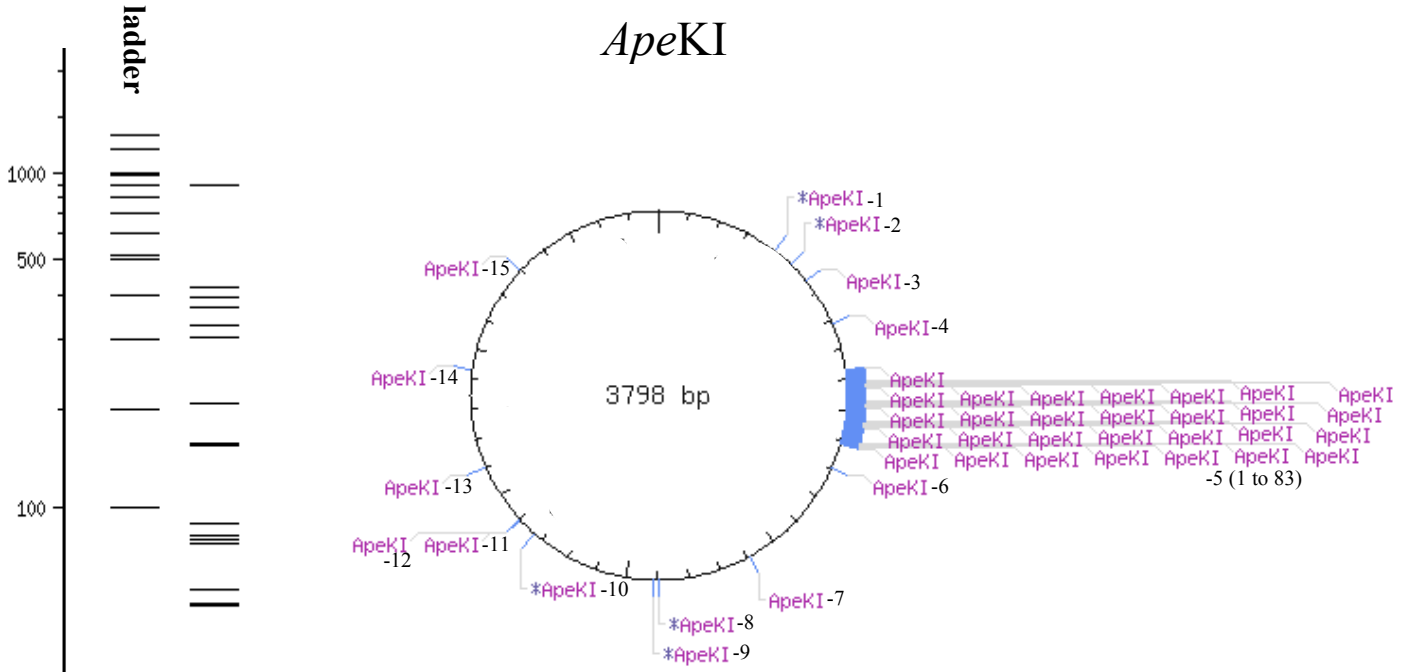
#	Cut position (5' ext. - 3' ext.)	<i>MwoI</i> site with flanks	
		5' -GCNN NNN NNGC-3'	3' -CGNN NNN NNCG-5'
1	*338/335	5'-GGGAAAGCCG	GCGA _▲ ACG TGGC GAGAAAGGAA-3'
2	*368/365	5'-AGGGAAGAAA	GCGA _▲ AAG GAGC GGGCGCTAGG-3'
3	395/392	5'-AGGGCGCTG	GCAA _▲ GTG TAGC GGTCACGCTG-3'
4	*437/434	5'-ACACCCGCC	GCGC _▲ TTA ATGC GCCGCTACAG-3'
5	*439/436	5'-ACCCGCCGC	GCTT _▲ AAT GCGC CGCTACAGGG-3'
6	472/469	5'-CGTCCCATT	GCCA _▲ TTC AGGC TGCGCAACTG-3'
7	*502/499	5'-GTTGGGAAGG	GCGA _▲ TCG GTGC GGGCCTCTTC-3'
8	*825/822	5'-GGAGGGAGGG	GCCG _▲ GGT CCGC GGCCGGCGAA-3'
9	841/838	5'-TCCGCGGCCG	GCGA _▲ ACG GGGC TCGAAGGGTC-3'
10 (1 to 83)	868/865 to 1114/1111	repeat	5'-GGTCCTTGTA GCCG _▲ GGA _▲ ATG _▲ CTG _▲ CTG _▲ CTG _▲CTG...-3'
11	1207/1204	5'-TGGGAAGGCA	GCAA _▲ GCC GGGC CGTCCGTGTT-3'
12	*1306/1303	5'-GCTCTGGGGA	GCGT _▲ CTG GCGC GATCTCTGCC-3'
13	*1315/1312	5'-AGCGTCTGGC	GCGA _▲ TCT CTGC CTGCTTACTC-3'
14	1352/1349	5'-TTTGCTTTGG	GCTA _▲ GAG CGGC CGCCACCGCG-3'
15	*1361/1358	5'-GGCTAGAGCG	GCCG _▲ CCA CCGC GGTGGAGCTC-3'
16	*1413/1410	5'-GGGTTAATT	GCGC _▲ GCT TGGC GTAATCATGG-3'
17	1512/1509	5'-AAGTGTAAT	GCCT _▲ GGG GTGC CTAATGAGTG-3'
18	1556/1553	5'-TAATTGCGTT	GCGC _▲ TCA CTGC CCGCTTTCCA-3'
19	*1640/1637	5'-GAGGCGGTTT	GCGT _▲ ATT GGGC GCTCTTCCGC-3'
20	1659/1656	5'-GCGCTCTTCC	GCTC _▲ TAG AAGC TTTTTCAAA-3'
21	1730/1727	5'-TAGCTCAGAG	GCCG _▲ AGG CGGC CTCGGCCTCT-3'
22	1736/1733	5'-AGAGGCCGAG	GCGG _▲ CCT CGGC CTCTGCATAA-3'
23	*1815/1812	5'-GGAGTTAGGG	GCGG _▲ GAT GGGC GGAGTTAGGG-3'
24	1929/1926	5'-GCTGCGGCGA	GCGG _▲ TAT CAGC TCACTCAAAG-3'
25	*2043/2040	5'-TAAAAAGGCC	GCGT _▲ TGC TGGC GTTTTTCCAT-3'
26	*2615/2612	5'-TTTGCAAGCA	GCAG _▲ ATT ACGC GCAGAAAAAA-3'
27	3003/3000	5'-AAACCAGCCA	GCCG _▲ GAA GGGC CGAGCGCAGA-3'

TseI



#	Cut position (5' ext. - 3' ext.)	<i>TseI</i> site with flanks	
		5' -G CWG C-3'	3' -C GWC G-5'
1	*406/409	5' -TAGCGGTCAC	G CTG C GCGTAACCAC-3'
2	475/478	5' -CGCCATTCAG	G CTG C GCAACTGTTG-3'
3	548/551	5' -AGGGGGATGT	G CTG C AAGGCGATTA-3'
4	709/712	5' -TCGAATTCCT	G CAG C CCGGGGGATC-3'
5 (1 to 83)	871/874 to 1114/1117	repeat 5' -AGCCGGGAAT	G CTG CG CTG CG CTG CTG CTGGGGGG-3'
6	1198/1201	5' -GCCTGGGAAG	G CAG C AAGCCGGGCC-3'
7	1592/1595	5' -TGTCGTGCCA	G CTG C ATTAATGAAT-3'
8	*1895/1898	5' -TCACTGACTC	G CTG C GCTCGGTCGT-3'
9	1913/1916	5' -CGGTCGTTCG	G CTG C GGCGAGCGGT-3'
10	*2332/2335	5' -CAGCCCGACC	G CTG C GCCTTATCCG-3'
11	2397/2400	5' -ATCGCCACTG	G CAG C AGCCACTGGT-3'
12	2400/2403	5' -GCCACTGGCA	G CAG C CACTGGTAAC-3'
13	2606/2609	5' -TTGTTTGCAA	G CAG C AGATTACCG-3'
14	2934/2937	5' -TGGCCCCAGT	G CTG C AATGATACCG-3'
15	3300/3303	5' -CATGGTTATG	G CAG C ACTGCATAAT-3'

ApeKI



#	Cut position (5' ext. - 3' ext.)	<i>ApeKI</i> site with flanks	
		5' -G CWG C-3'	3' -C GWC G-5'
1	*406/409	5' -TAGCGGTCAC	G CTG C GCGTAACCAC-3'
2	*475/478	5' -CGCCATTCAG	G CTG C GCAACTGTTG-3'
3	548/551	5' -AGGGGGATGT	G CTG C AAGGCGATTA-3'
4	709/712	5' -TCGAATTCCT	G CAG C CCGGGGGATC-3'
5 (1 to 83)	871/874 to 1114/1117	repeat 5' -AGCCGGAAT	G CTG CTG CTG CTG CTGGG-3'
6	1198/1201	5' -GCCTGGGAAG	G CAG C AAGCCGGGCC-3'
7	1592/1595	5' -TGTCGTCCA	G CTG C ATTAATGAAT-3'
8	*1895/1898	5' -TCACTGACTC	G CTG C GCTCGGTCGT-3'
9	*1913/1916	5' -CGGTCGTTTCG	G CTG C GGCGAGCGGT-3'
10	*2332/2335	5' -CAGCCCGACC	G CTG C GCCTTATCCG-3'
11	2397/2400	5' -ATCGCCACTG	G CAG C AGCCACTGGT-3'
12	2400/2403	5' -GCCACTGGCA	G CAG C CACTGGTAAC-3'
13	2606/2609	5' -TTGTTTGCAA	G CAG C AGATTACCG-3'
14	2934/2937	5' -TGGCCCCAGT	G CTG C AATGATACCG-3'
15	3300/3303	5' -CATGGTTATG	G CAG C ACTGCATAAT-3'