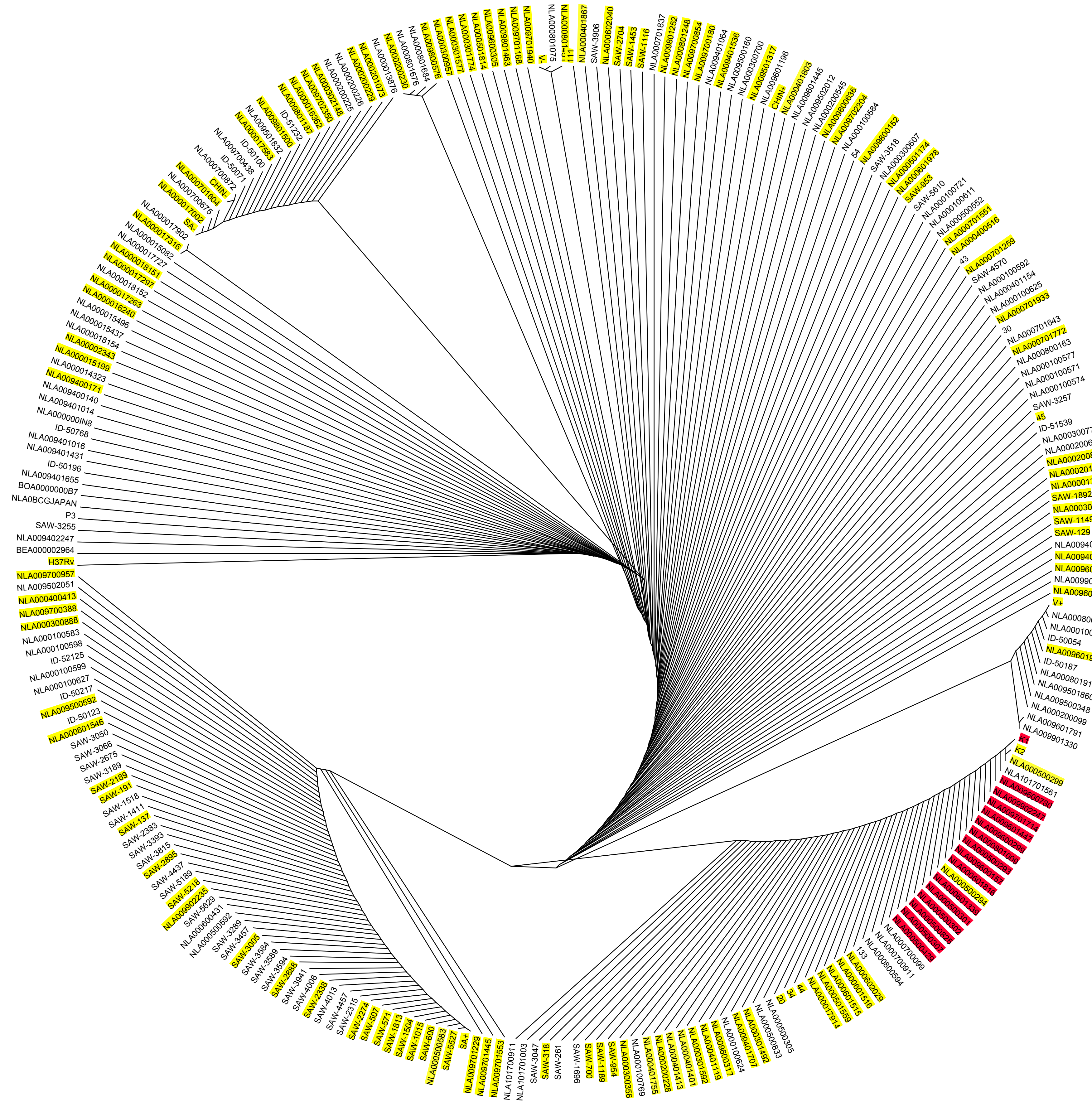


Supporting Figure S2 Distribution of RD131 in phylogenetic tree
 Strains with background colors were assayed for the absence or presence of the RD.
 No background color: strain not assayed.
 Red: RD is present (deletion was identified).
 Yellow: RD is absent (no deletion has occurred).



I do not think that it has been shown that mutT genes are really inactivated in Beijings, but there are other options as well.