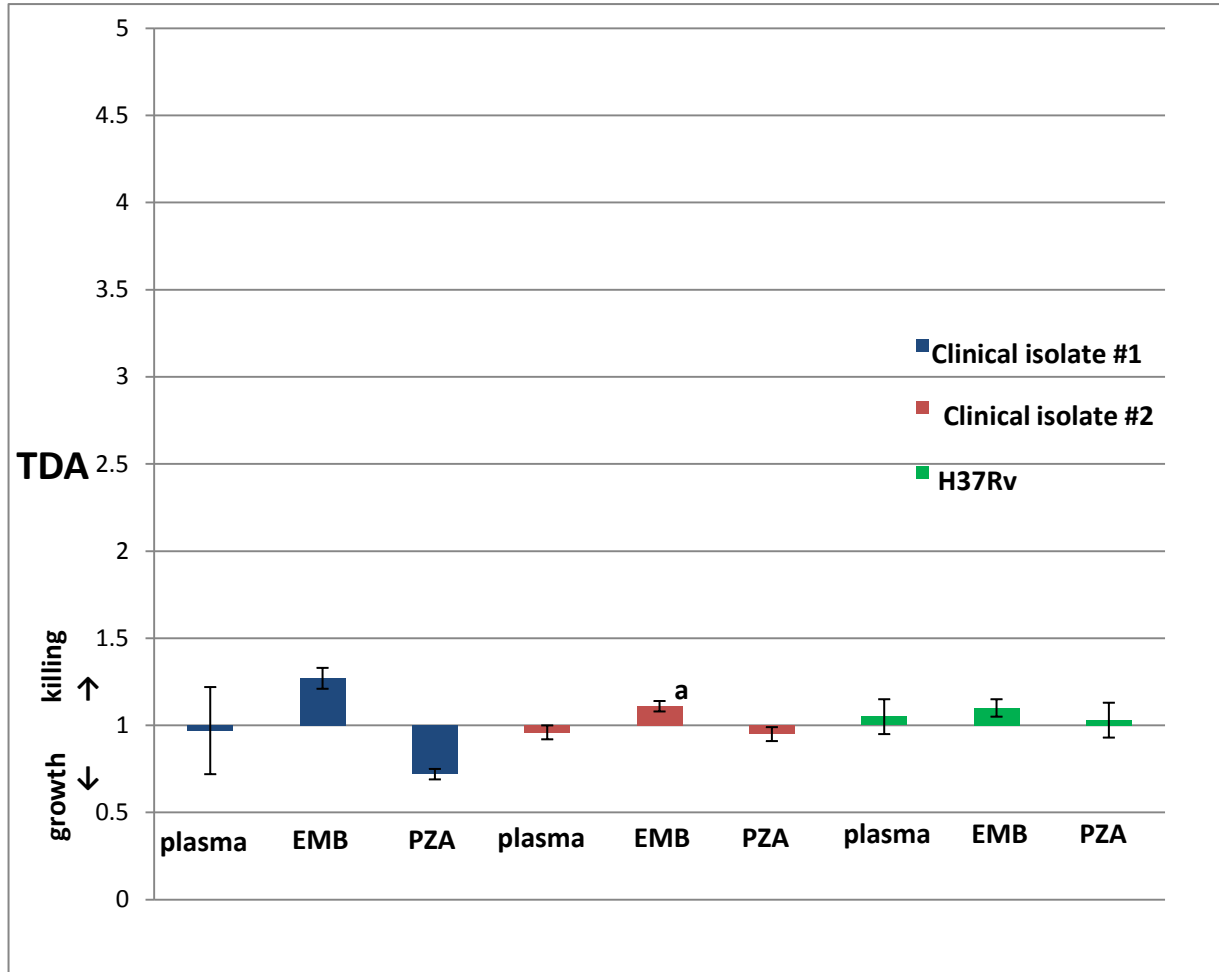


Supplemental Figure 1. TB drug activity (TDA) for ethambutol and pyrazinamide for drug-susceptible *M. tuberculosis* isolates.



TDA was performed using *M. tuberculosis* isolates and volunteer plasma alone or plasma spiked with 5 µg/ml ethambutol (EMB) or 30 µg/ml pyrazinamide (PZA); expected C_{2hr} range for EMB= 2-6 µg/ml and PZA= 20-50 µg/ml. TDA reported as a ratio of time-to-detection of plasma co-cultured *M. tuberculosis* vs. time-to-detection of *M. tuberculosis* alone. TDA ratio =1.0 indicates stasis, TDA>1.0 indicates killing, and TDA<1.0 indicates growth. The clinical isolates #1 and #2 and laboratory strain, H37Rv, had ethambutol (EMB) MICs of 2.5 µg/ml which was susceptible by 1% proportions method. All isolates were also susceptible to PZA.

^aFor clinical isolate #2, mean TDA with EMB at 5 µg/ml was 1.11 ± 0.03 which differed significantly from plasma alone 0.96 ± 0.04 , $p=0.05$. All other comparisons were not statistically significant.