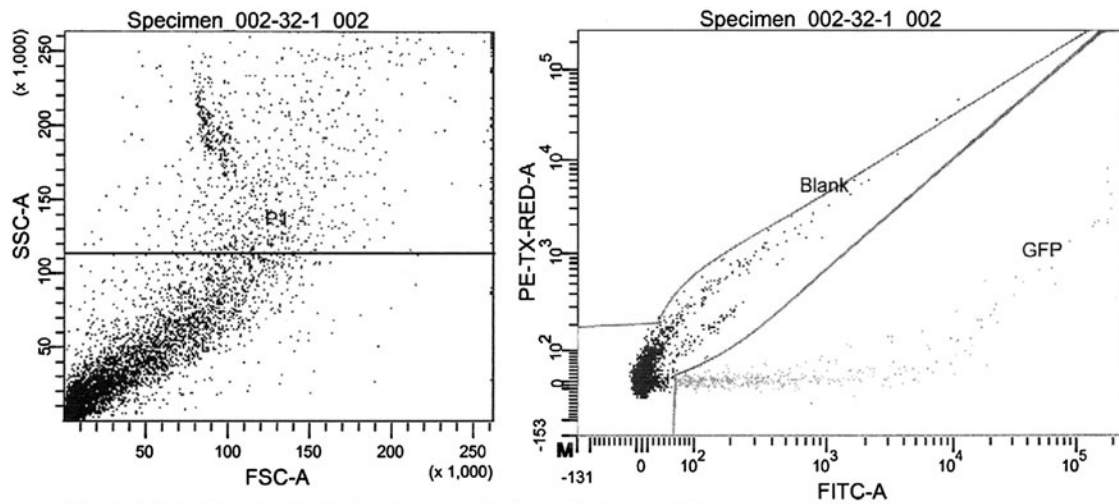


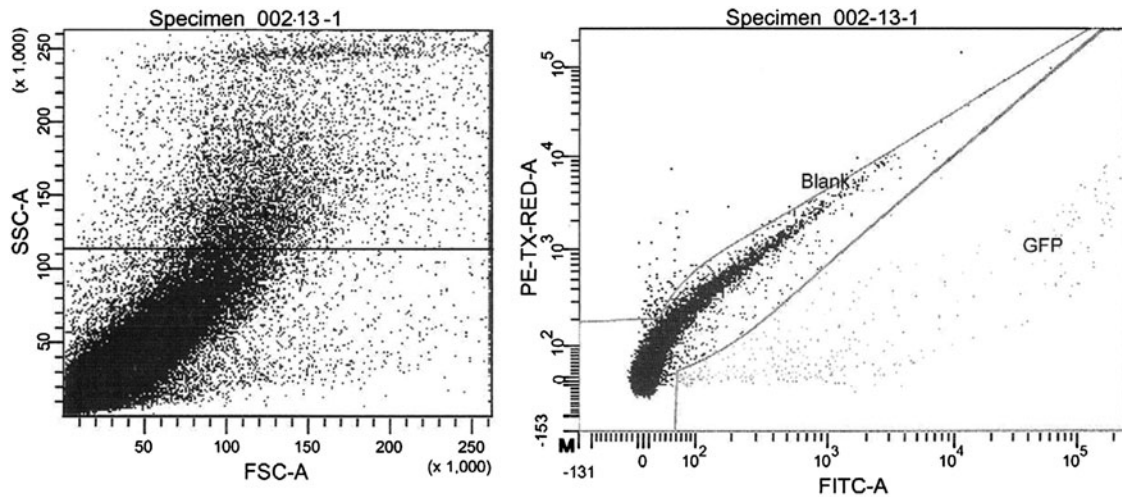
Supplementary Data



Tube: 32			
Population	#Events	%Parent	%Total
All Events	14,684		100.0
P1	14,684	100.0	100.0
Blank	14,246	97.0	97.0
GFP	433	2.9	2.9

Experiment Name:	NB (Sreeja)				
Specimen Name:	Specimen_002				
Tube Name:	32				
Record Date:	Feb 24, 2011 12:07:23 PM				
\$OP:	Administrator				
GUID:	14e18f84-a451-4ad4-9b7a-145045bcc1f5				
Population	#Events	%Parent	FITC-A Mean	PE-TX-RED-A Mean	PE-TX-RED-A SD
All Events	14,684	####	497	108	3,385
P1	14,684	100.0	497	108	3,385
Blank	14,246	97.0	5	15	156
GFP	433	2.9	16,636	3,009	19,336

SUPPLEMENTARY FIG. S1. FACS analysis for GFP-expressing tetherin shRNA-transfected cells. Neuroblastoma cells were cultured with turbofectin and tetherin shRNA plasmid expressing GFP, and selected in the puromycin-containing medium. The GFP-expressing cells were positively sorted and expanded separately in puromycin-supplemented medium for further studies. Tetherin shRNA plasmids were retained in neuroblastoma cells for at least nine passages.



Tube: 13-1

Population	#Events	%Parent	%Total
All Events	138,140		100.0
P1	138,140	100.0	100.0
Blank	137,670	99.7	99.7
GFP	400	0.3	0.3

Experiment Name: NB (Sreeja)
 Specimen Name: Specimen_002
 Tube Name: 13
 Record Date: Feb 24, 2011 12:30:09 PM
 \$OP: Administrator
 GUID: cddc59e1-8848-4e1e-b5c7-5a0c8acd34d0

Population	#Events	%Parent	FITC-A Mean	PE-TX-RED-A Mean	PE-TX-RED-A SD
All Events	138,140	####	82	29	1,003
P1	138,140	100.0	82	29	1,003
Blank	137,670	99.7	7	22	326
GFP	400	0.3	25,703	1,866	16,028

SUPPLEMENTARY FIG. S2. FACS analysis for GFP-expressing scrambled shRNA-transfected cells. Neuroblastoma cells were cultured with turbofectin and scrambled shRNA plasmid expressing GFP, and selected in the puromycin-containing medium. The GFP-expressing cells were positively sorted and expanded separately in puromycin-supplemented medium for further studies. Scrambled shRNA plasmids were retained in neuroblastoma cells for at least nine passages.