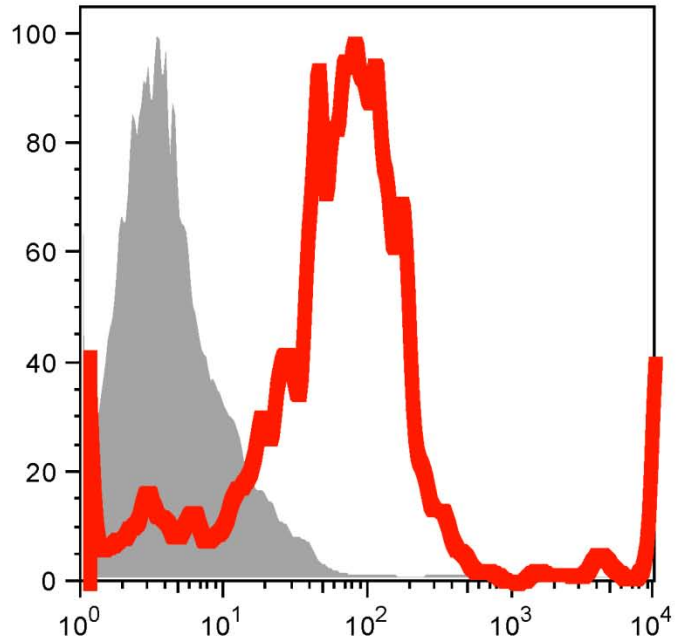
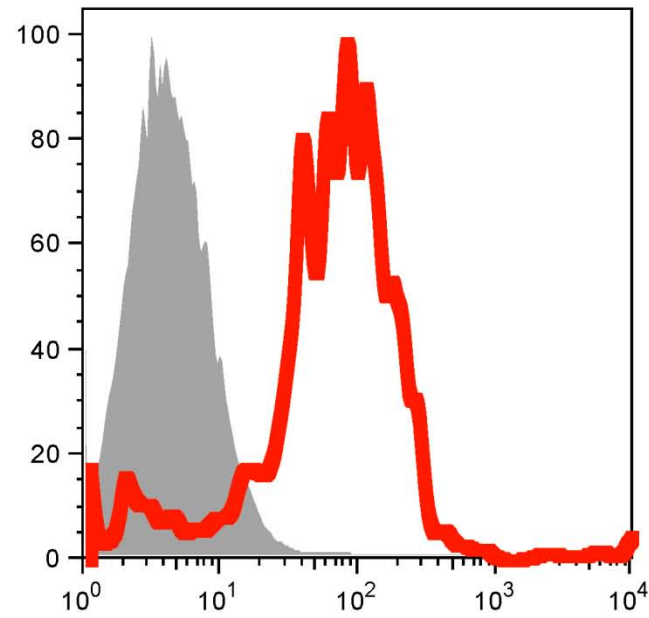


# Min CI

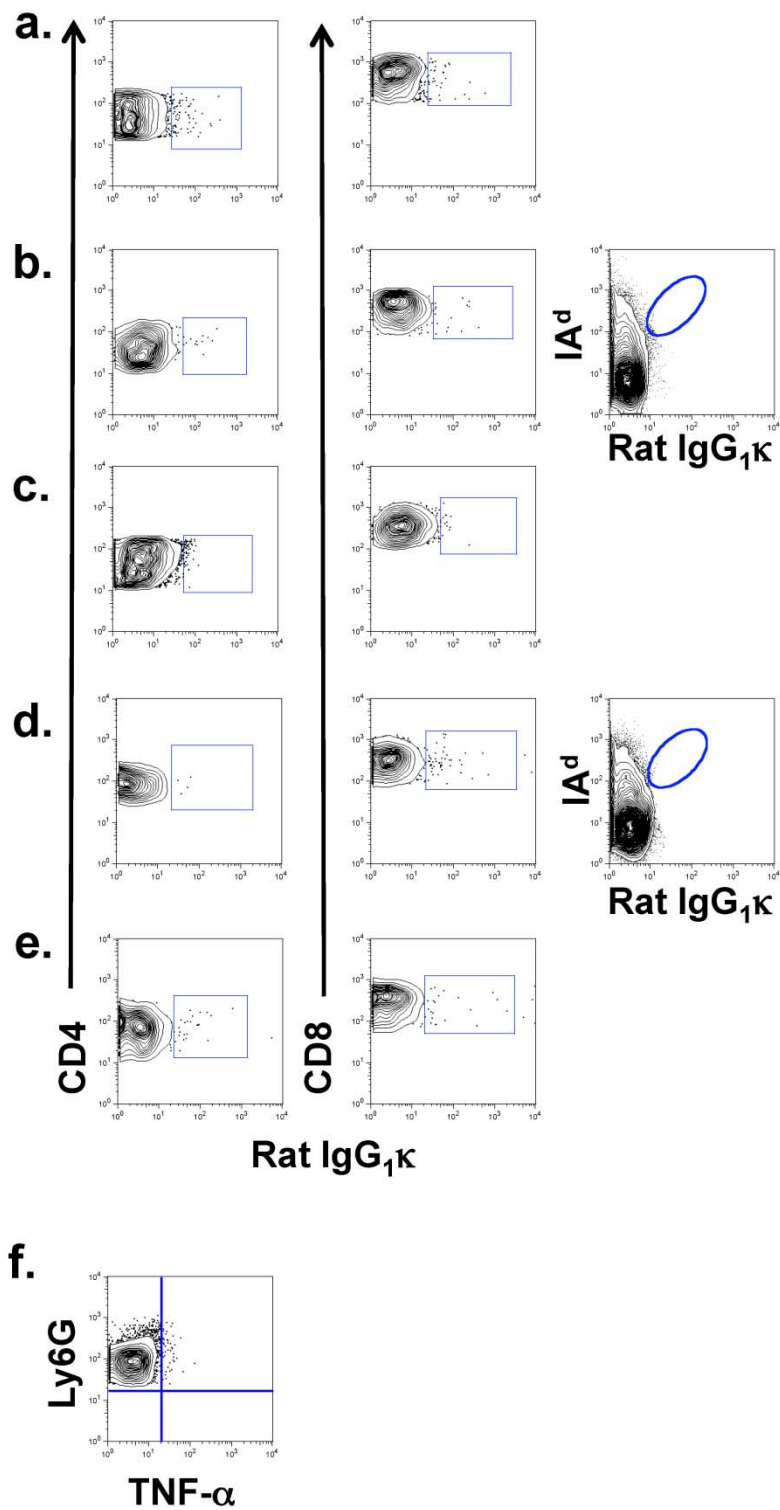


# Ext CI



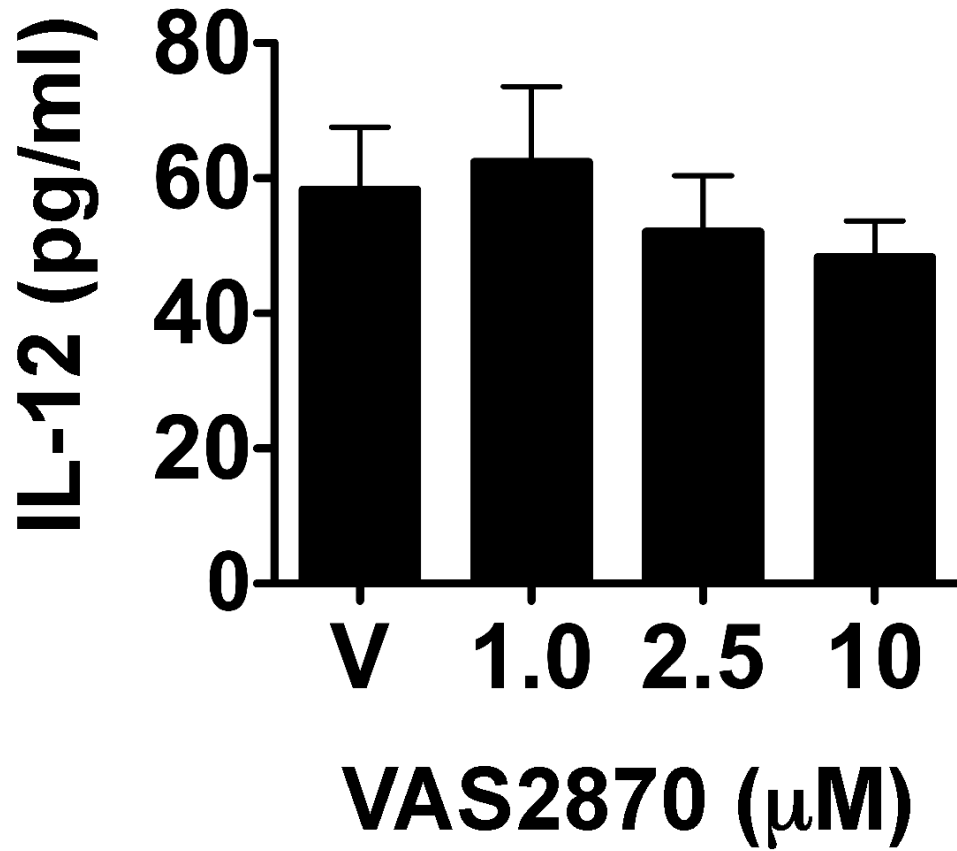
## CD11c

**Figure S1. Ingraft I-A<sup>α</sup>IL-12<sup>+</sup> cells stained with either CD11c-specific (red lines) or isotype control antibodies (solid histogram) in Min CI or Ext CI Balb/c → B6 lung recipients 24 hours following transplantation**



**Figure S2**

(A–E) Intracellular isotype control staining using Rat IgG<sub>1</sub>k Abs for IFN- $\gamma$  and IL-12p40/70 expression for Figs. 3D, 4C, 4D, and 4G, respectively. (F) TNF- $\alpha$  Ab intracellular staining of airway neutrophils from Ext CI Balb/c  $\rightarrow$  TNF- $\alpha$ <sup>-/-</sup> lung recipients on POD1.



**Figure S3.** Airway neutrophils from Ext CI Balb/c  $\rightarrow$  B6 TNF- $\alpha^{-/-}$  lung recipients on POD1 were treated with indicated concentrations of VAS2870 or vehicle (V) and co-cultured with BDMCs  
IL-12 accumulation was assessed in the culture supernatant 24 hours later.