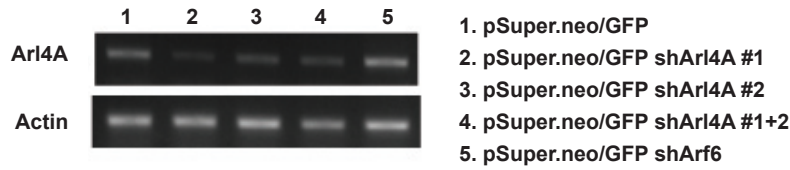
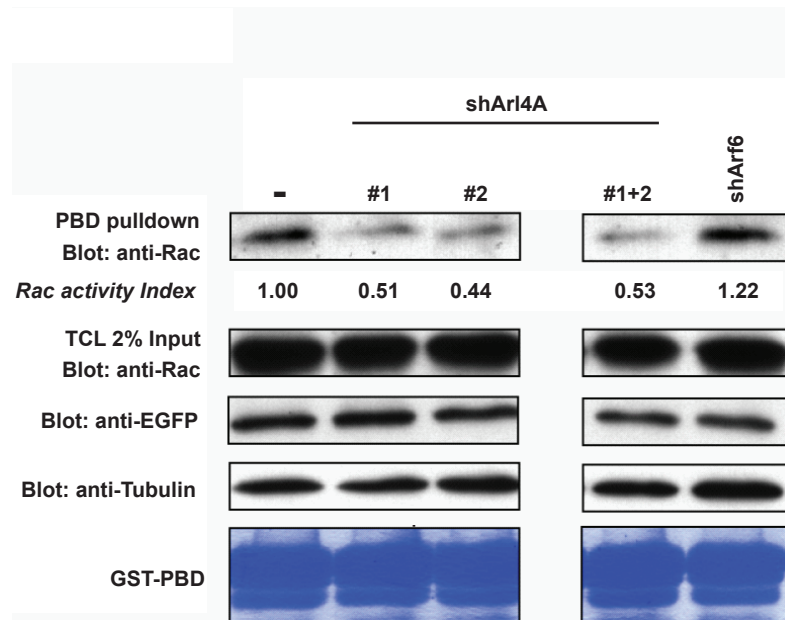


A



B



Supplementary Figure S3. Knockdown of Arl4A decreases Rac activation levels in HeLa cells. (A) ARL4A expression was depleted using shRNA. HeLa cells were transfected by pSUPER.neo/EGFP only, pSUPER.neo/EGFP containing sequences specific against ARL4A (shARL4A#1 and #2) or ARF6 (shARF6). After 72 h of transfection, the cells were harvested and the mRNA was extracted for detecting the knockdown efficiency by RT-PCR. (B) HeLa cells were treated with shArl4A#1, #2,#1+2, and shArf6. After 72 h, cell lysates were collected and Rac-GTP levels were detected by PAK-PBD pulldown assays. Rac1 protein levels were detected by immunoblot using anti-Rac1 antibody. The protein level of EGFP indicated the transfection efficiency of each group.